



CDC37 (Phospho Ser13) Rabbit mAb

Catalog No	YP-rAb-18477
Isotype	IgG
Reactivity	Human,Mouse,Rat
Applications	WB,IHC,IF,IP,ELISA
Gene Name	CDC37
Protein Name	Hsp90 co-chaperone Cdc37
Purification Process	Protein A
Specificity	This antibody detects endogenous levels of CDC37 only when phosphorylated at Ser13.
Formulation	PBS, 50% glycerol, 0.05% Proclin 300, 0.05%BSA
Source	Monoclonal, Rabbit,IgG
Dilution	IHC 1:400-1000; WB 1:1000-5000; IF 1:200-1000; ELISA 1:5000-20000; IP 1:50-200 Note: For IHC, we suggest antigen retrieval with TE buffer pH 9.0
Concentration	0.5 mg/ml
Purity	≥90%
Storage Stability	-15° C to -25° C/1 year(Do not lower than -25° C)
Synonyms	CDC37 ; CDC37A ; Hsp90 co-chaperone Cdc37 ; Hsp90 chaperone protein kinase-targeting subunit ; p50Cdc37
Observed Band	44kD
Calculated Molecular Weight	44kD
Cell Pathway	Cytoplasm
Tissue Specificity	Lymph,Placenta,
Function	Co-chaperone that binds to numerous kinases and promotes their interaction with the Hsp90 complex, resulting in stabilization and promotion of their activity.,PTM:Constitutively sumoylated by UBE21.,similarity:Belongs to the CDC37 family.,subunit:Forms a complex with Hsp90. Interacts with AR, CDK4, CDK6, EIF2AK1 and RB1.,
Background	The protein encoded by this gene is highly similar to Cdc 37, a cell division cycle control protein of Sacchomyces cerevisiae. This protein is a molecular chaperone with specific function in cell signal transduction. It has been shown to form complex with Hsp90 and a variety of protein kinases including CDK4, CDK6, SRC, RAF-1, MOK, as well as eIF2 alpha kinases. It is thought to play a critical role in directing Hsp90 to its target kinases. [provided by RefSeq, Jul 2008],



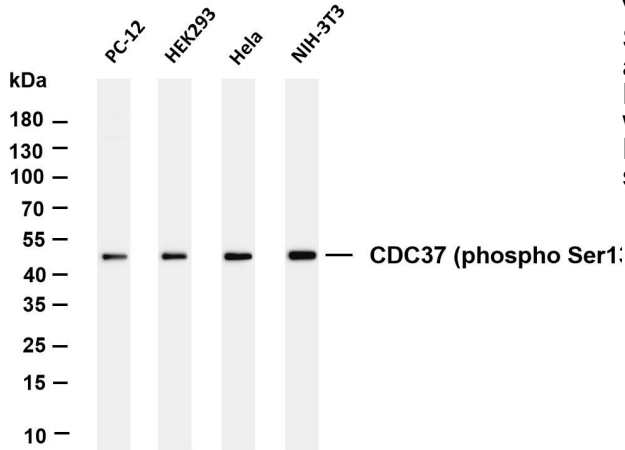


matters needing attention

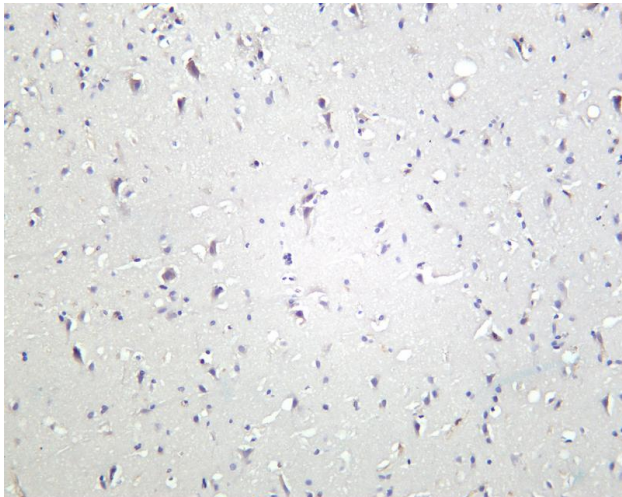
Avoid repeated freezing and thawing!

Usage suggestions

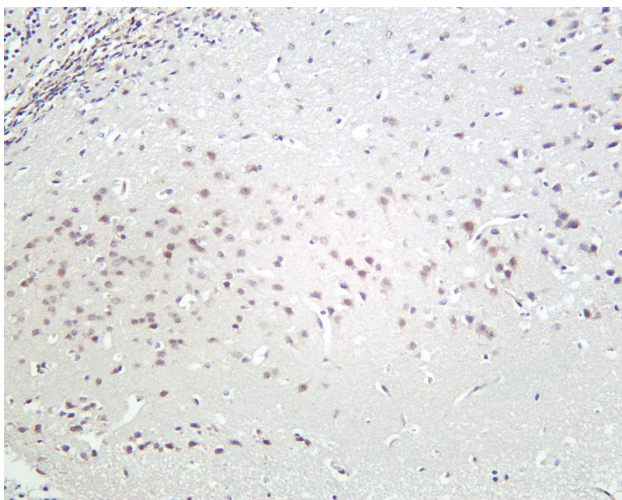
This product can be used in immunological reaction related experiments. For more information, please consult technical personnel.



Various whole cell lysates were separated by 4-20% SDS-PAGE, and the membrane was blotted with anti-CDC37 (phospho Ser13) antibody. The HRP-conjugated Goat anti-Rabbit IgG(H + L) antibody was used to detect the antibody. Lane 1: PC-12 Lane 2: HEK293 Lane 3: HeLa Lane 4: NIH-3T3 Predicted band size: 44kDa Observed band size: 44kDa



Human brain was stained with Anti-CDC37 (phospho Ser13) rabbit antibody



Mouse brain was stained with Anti-CDC37 (phospho Ser13) rabbit antibody

杭州臻优品生物科技有限公司

热销产品:

蛋白、一抗、抗体对、ELISA试剂盒、生化试剂盒
CCK8试剂盒、QPCR检测试剂盒

检测服务:

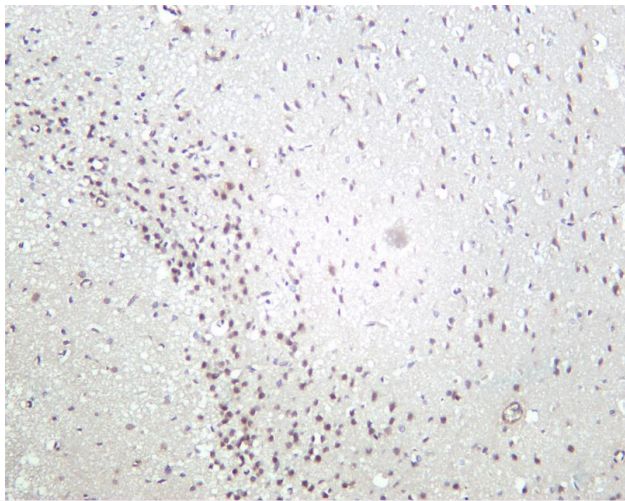
ELISA检测及定制服务 | 生化检测 | PCR、QPCR检测 | WB检测
ICO-IP检测 | 切片 | 染色 | 免疫组化 | 免疫荧光 | 透射电镜全套
| 宏基因组、转录组、基因组、蛋白组、代谢组测序



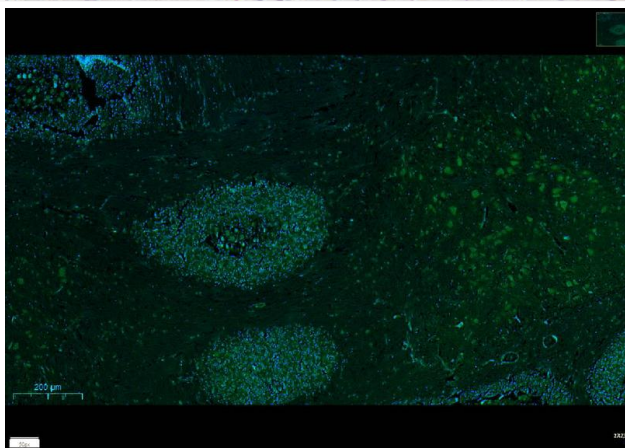
关注官网



关注客服



Rat brain was stained with Anti-CDC37 (phospho Ser13) rabbit antibody



mouse brain was stained with Anti-CDC37 (phospho Ser13) rabbit antibody

杭州臻优品生物科技有限公司

热销产品:

蛋白、一抗、抗体对、ELISA试剂盒、生化试剂盒
CCK8试剂盒、QPCR检测试剂盒

检测服务:

ELISA检测及定制服务 | 生化检测 | PCR、QPCR检测 | WB检测
ICO-IP检测 | 切片 | 染色 | 免疫组化 | 免疫荧光 | 透射电镜全套
| 宏基因组、转录组、基因组、蛋白组、代谢组测序



关注官网



关注客服