



# Smad2 (Phospho Ser250) Rabbit mAb

<b>Catalog No</b>	YP-rAb-18472
<b>Isotype</b>	IgG
<b>Reactivity</b>	Human,Mouse,Rat
<b>Applications</b>	WB,IHC,IF,ELISA
<b>Gene Name</b>	SMAD2
<b>Protein Name</b>	Mothers against decapentaplegic homolog 2
<b>Purification Process</b>	Protein A
<b>Specificity</b>	This antibody detects endogenous levels of Smad2 only when phosphorylated at Ser250.This antibody does not recognize phosphorylated at other sites.
<b>Formulation</b>	PBS, 50% glycerol, 0.05% Proclin 300, 0.05%BSA
<b>Source</b>	Monoclonal, Rabbit,IgG
<b>Dilution</b>	IHC 1:100-1:500; WB 1:1000-1:5000; IF 1:200-1:1000; ELISA 1:5000-1:20000; Note: For IHC, we suggest antigen retrieval with TE buffer pH 9.0
<b>Concentration</b>	0.5 mg/ml
<b>Purity</b>	≥90%
<b>Storage Stability</b>	-15° C to -25° C/1 year(Do not lower than -25° C)
<b>Synonyms</b>	SMAD2 ; MADH2 ; MADR2 ; Mothers against decapentaplegic homolog 2 ; MAD homolog 2 ; Mothers against DPP homolog 2 ; JV18-1 ; Mad-related protein 2 ; hMAD-2 ; SMAD family member 2 ; SMAD 2 ; Smad2 ; hSMAD2
<b>Observed Band</b>	58kD
<b>Calculated Molecular Weight</b>	52kD
<b>Cell Pathway</b>	Cytoplasm, Nuclear
<b>Tissue Specificity</b>	Expressed at high levels in skeletal muscle, endothelial cells, heart and placenta.
<b>Function</b>	Disease:Defects in SMAD2 are found in sporadic cases of colorectal carcinoma.,Function:Transcriptional modulator activated by TGF-beta and activin type 1 receptor kinase. SMAD2 is a receptor-regulated SMAD (R-SMAD). May act as a tumor suppressor in colorectal carcinoma.,PTM:Acetylated on Lys-19 by coactivators in response to TGF-beta signaling, which increases transcriptional activity. Isoform short: Acetylation increases DNA binding activity in vitro and enhances its association with target promoters in vivo.,PTM:In response to TGF-beta, ubiquitinated by NEDD4L; which promotes its degradation.,PTM:Phosphorylated on one or several of Thr-220, Ser-245, Ser-250, and Ser-255. In response to TGF-beta, phosphorylated on Ser-465/467 by TGF-beta and activin type 1 receptor kinases. Able to interact with SMURF2

杭州臻优品生物科技有限公司

热销产品:

蛋白、一抗、抗体对、ELISA试剂盒、生化试剂盒  
CCK8试剂盒、QPCR检测试剂盒

检测服务:

ELISA检测及定制服务 | 生化检测 | PCR、QPCR检测 | WB检测  
| CO-IP检测 | 切片 | 染色 | 免疫组化 | 免疫荧光 | 透射电镜全套  
| 宏基因组、转录组、基因组、蛋白组、代谢组测序



关注官网



关注客服



when phosphorylated on Ser-465/467, recruiting other proteins, such as SNON, for degradation. In response to decorin, the naturally occurring inhibitor of TGF-beta signaling, phosphorylated on Ser-240 by CaMK2. Phosphorylated by MAPK3 upon EGF stimulation; which increases transcriptional activity and stability, and is blocked by calmodulin. similarity: Belongs to the dwarfin/SMAD family. similarity: Contains 1 MH1 (MAD homology 1) domain. similarity: Contains 1 MH2 (MAD homology 2) domain. subcellular location: Cytoplasmic in the absence of ligand. Migrates to the nucleus when complexed with SMAD4. subunit: Found in a complex with SMAD3 and TRIM33 upon addition of TGF-beta. Interacts with SMAD3 and TRIM33. Interacts with SARA (SMAD anchor for receptor activation); may form trimers with the SMAD4 co-SMAD. Interacts with FOXH1, homeobox protein TGIF, PEBP2-alpha subunit, CREB-binding protein (CBP), EP300 and SKI. Interacts with SNON; when phosphorylated at Ser-465/467. Interacts (via PY-motif) with SMURF2. Interacts with AIP1 and HGS. Interacts with NEDD4L in response to TGF-beta (By similarity). Interacts with LBXCOR1 and CORL2. tissue specificity: Expressed at high levels in skeletal muscle, heart and placenta.

## Background

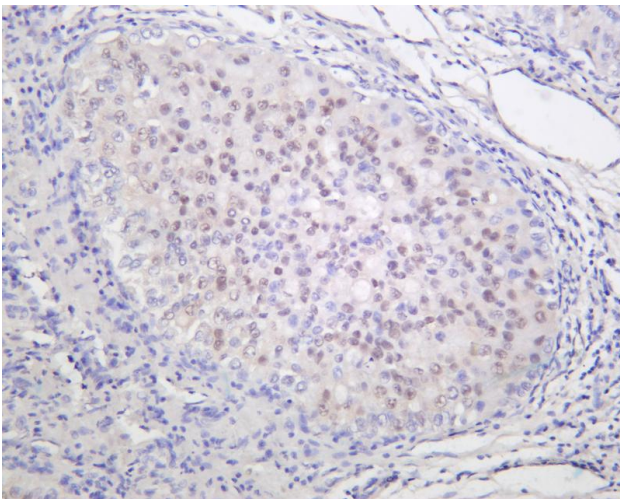
The protein encoded by this gene belongs to the SMAD, a family of proteins similar to the gene products of the Drosophila gene 'mothers against decapentaplegic' (Mad) and the C. elegans gene Sma. SMAD proteins are signal transducers and transcriptional modulators that mediate multiple signaling pathways. This protein mediates the signal of the transforming growth factor (TGF)-beta, and thus regulates multiple cellular processes, such as cell proliferation, apoptosis, and differentiation. This protein is recruited to the TGF-beta receptors through its interaction with the SMAD anchor for receptor activation (SARA) protein. In response to TGF-beta signal, this protein is phosphorylated by the TGF-beta receptors. The phosphorylation induces the dissociation of this protein with SARA and the association with the family member SMAD4. The association with SMAD4 is important for the translocation

## matters needing attention

Avoid repeated freezing and thawing!

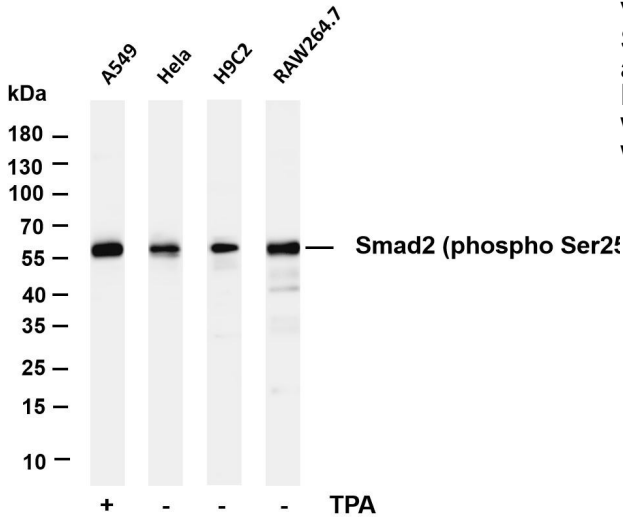
## Usage suggestions

This product can be used in immunological reaction related experiments. For more information, please consult technical personnel.

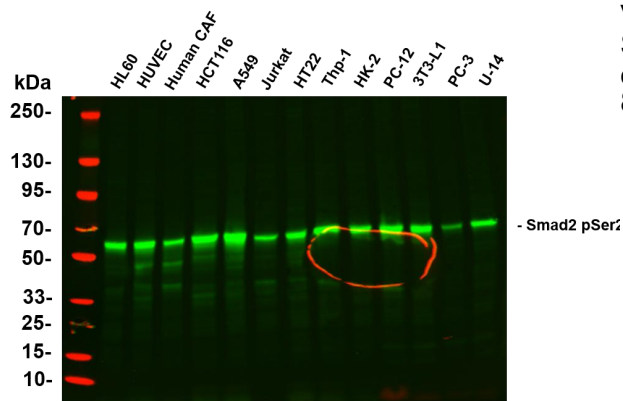


Human hepatocellular carcinoma was stained with anti-Smad2 (phospho Ser250) rabbit antibody

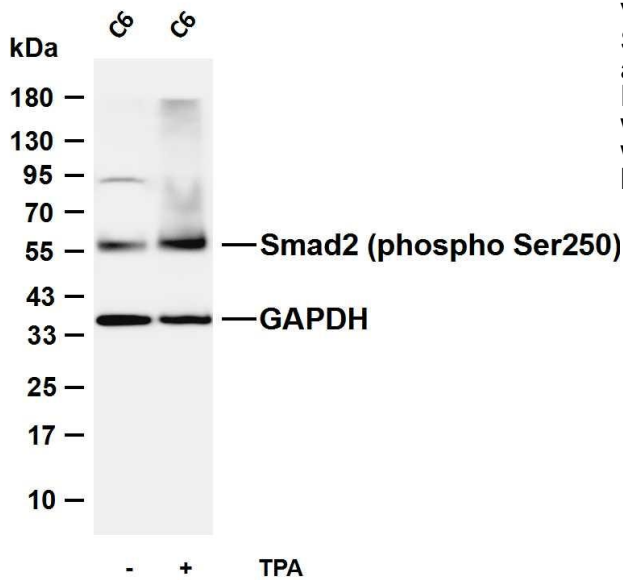




Various whole cell lysates were separated by 4-20% SDS-PAGE, and the membrane was blotted with anti-Smad2 (phospho Ser250) antibody. The HRP-conjugated Goat anti-Rabbit IgG(H + L) antibody was used to detect the antibody. Lane 1: A549 treated with TPA for 48 hou



Various whole cell lysates were separated by 4-20% SDS-PAGE, and the primary antibody was used at 4°C, over night with a 1:2500 dilution . The Dylight 800-conjugated Goat anti-Rabbit antibody



Various whole cell lysates were separated by 4-20% SDS-PAGE, and the membrane was blotted with anti-Smad2 (phospho Ser250) antibody. The HRP-conjugated Goat anti-Rabbit IgG (H + L) antibody was used to detect the antibody. Lane 1: C6 Lane 2: C6 was treated with TPA (200nM) for 30 minutes Predicted band size: 58kDa Observed band size: 58kDa

