



# MEK1/2 (Phospho Ser217/221) Rabbit mAb

<b>Catalog No</b>	YP-rAb-18453
<b>Isotype</b>	IgG
<b>Reactivity</b>	Human,Mouse,Rat
<b>Applications</b>	WB,IHC,IF,IP,ELISA
<b>Gene Name</b>	MAP2K1/MAP2K2
<b>Protein Name</b>	
<b>Purification Process</b>	Protein A
<b>Specificity</b>	
<b>Formulation</b>	PBS, 50% glycerol, 0.05% Proclin 300, 0.05%BSA
<b>Source</b>	Monoclonal, Rabbit,IgG
<b>Dilution</b>	IHC 1:1000-1:5000; WB 1:2000-1:10000; IF 1:200-1:1000; ELISA 1:5000-1:20000; IP 1:50-1:200; Note: For IHC, we suggest antigen retrieval with TE buffer pH 9.0
<b>Concentration</b>	0.5 mg/ml
<b>Purity</b>	≥90%
<b>Storage Stability</b>	-15° C to -25° C/1 year(Do not lower than -25° C)
<b>Synonyms</b>	
<b>Observed Band</b>	44kD
<b>Calculated Molecular Weight</b>	44kD
<b>Cell Pathway</b>	Cytoplasm, cytoskeleton, microtubule organizing center, centrosome . Cytoplasm, cytoskeleton, microtubule organizing center, spindle pole body . Cytoplasm . Nucleus . Membrane ; Peripheral membrane protein . Localizes at centrosomes during prometaphase, midzone during anaphase and midbody during telophase/cytokinesis (PubMed:14737111). Membrane localization is probably regulated by its interaction with KSR1 (PubMed:10409742). .
<b>Tissue Specificity</b>	Widely expressed, with extremely low levels in brain.
<b>Function</b>	M phase of mitotic cell cycle, MAPKKK cascade, activation of MAPK activity, mitotic cell cycle, M phase, nuclear division,cell morphogenesis, regulation of vascular smooth muscle contraction, regulation of transcription, DNA-dependent,regulation of transcription from RNA polymerase II promoter, protein complex assembly, protein amino acid phosphorylation, phosphorus metabolic process, phosphate metabolic process, cell motion, chemotaxis, regulation of muscle contraction, regulation of smooth muscle contraction, response to oxidative stress, microtubule-based process,microtubule-based





movement, Golgi organization, cell cycle, mitosis, negative regulation of cell adhesion, intracellular signaling cascade, protein kinase cascade, small GTPase mediated signal transduction, Ras protein signal transduction, ectoderm development, behavior, locomotory behavior, cell proliferation, epidermis development, response to wounding, response to endogenous stimulus, response to hormone stimulus, epidermal cell differentiation, response to organic substance, positive regulation of macromolecule metabolic process, microtubule-based transport, phosphorylation, regulation of phosphate metabolic process, regulation of vasoconstriction, cell cycle process, cell cycle phase, regulation of cell-cell adhesion, negative regulation of cell-cell adhesion, cell projection organization, regulation of cell adhesion, neuron differentiation, keratinocyte differentiation, regulation of cell migration, positive regulation of cell migration, cytoskeleton-dependent intracellular transport, epithelial cell differentiation, neuron projection development, response to corticosteroid stimulus, regulation of Ras GTPase activity, positive regulation of Ras GTPase activity, melanosome localization, establishment of melanosome localization, melanosome transport, regulation of RNA elongation, positive regulation of RNA elongation, positive regulation of RNA elongation from RNA polymerase II promoter, cellular component morphogenesis, cell part morphogenesis, cellular pigmentation, positive regulation of kinase activity, regulation of homotypic cell-cell adhesion, negative regulation of homotypic cell-cell adhesion, regulation of RNA elongation from RNA polymerase II promoter, regulation of locomotion, positive regulation of locomotion, regulation of phosphorylation, taxis, positive regulation of catalytic activity, regulation of GTPase activity, regulation of MAP kinase activity, positive regulation of MAP kinase activity, pigmentation, positive regulation of GTPase activity, regulation of kinase activity, macromolecular complex subunit organization, regulation of system process, positive regulation of molecular function, regulation of transcription, positive regulation of cell differentiation, regulation of protein kinase activity, positive regulation of protein kinase activity, positive regulation of nucleobase, nucleoside, nucleotide and nucleic acid metabolic process, regulation of Ras protein signal transduction, intracellular transport, vesicle transport along microtubule, organelle fission, organelle inheritance, Golgi inheritance, response to steroid hormone stimulus, neuron development, response to axon injury, neuron projection morphogenesis, cell projection morphogenesis, regulation of small GTPase mediated signal transduction, positive regulation of developmental process, positive regulation of nitrogen compound metabolic process, regulation of phosphorus metabolic process, regulation of RNA metabolic process, positive regulation of RNA metabolic process, protein oligomerization, regulation of cell motion, positive regulation of cell motion, protein heterooligomerization, regulation of hydrolase activity, regulation of transferase activity, positive regulation of hydrolase activity, positive regulation of transferase activity, response to glucocorticoid stimulus, organelle localization, vesicle localization, establishment of vesicle localization, establishment of organelle localization, pigment granule localization, pigment granule transport, establishment of pigment granule localization, epithelium development, macromolecular complex assembly, protein complex biogenesis,

## Background

catalytic activity: ATP + a protein = ADP + a phosphoprotein. .disease: Defects in MAP2K1 are a cause of cardiofaciocutaneous syndrome (CFC syndrome) [MIM:115150]; also known as cardio-facio-cutaneous syndrome. CFC syndrome is characterized by a distinctive facial appearance, heart defects and mental retardation. Heart defects include pulmonic stenosis, atrial septal defects and hypertrophic cardiomyopathy. Some affected individuals present with ectodermal abnormalities such as sparse, friable hair, hyperkeratotic skin lesions and a generalized ichthyosis-like condition. Typical facial features are similar to Noonan syndrome. They include high forehead with bitemporal constriction, hypoplastic supraorbital ridges, downslanting palpebral fissures, a depressed nasal bridge, and posteriorly angulated ears with prominent helices. The inheritance of CFC syndrome is autosomal dominant. .enzyme regulation: Activated by phosphorylation. .function: Catalyzes the concomitant phosphorylation of a threonine and a tyrosine residue in a Thr-Glu-Tyr sequence located in MAP kinases. Activates ERK1 and ERK2 MAP kinases. .PTM: Acetylation by Yersinia yopJ prevents phosphorylation and activation, thus blocking the MAPK signaling pathway. .PTM: Phosphorylation on Ser/Thr by MAP kinase kinases (RAF or MEKK1) regulates positively the kinase activity. .similarity: Belongs to the protein kinase superfamily. .similarity: Belongs to the protein kinase superfamily. STE Ser/Thr protein kinase family. MAP kinase kinase subfamily. .similarity: Contains 1 protein kinase domain. .subunit: Interacts with MORG1 (By similarity). Interacts

## 杭州臻优品生物科技有限公司

### 热销产品:

蛋白、一抗、抗体对、ELISA试剂盒、生化试剂盒  
CCK8试剂盒、QPCR检测试剂盒

### 检测服务:

ELISA检测及定制服务 | 生化检测 | PCR、QPCR检测 | WB检测  
ICO-IP检测 | 切片 | 染色 | 免疫组化 | 免疫荧光 | 透射电镜全套  
| 宏基因组、转录组、基因组、蛋白组、代谢组测序



关注官网



关注客服



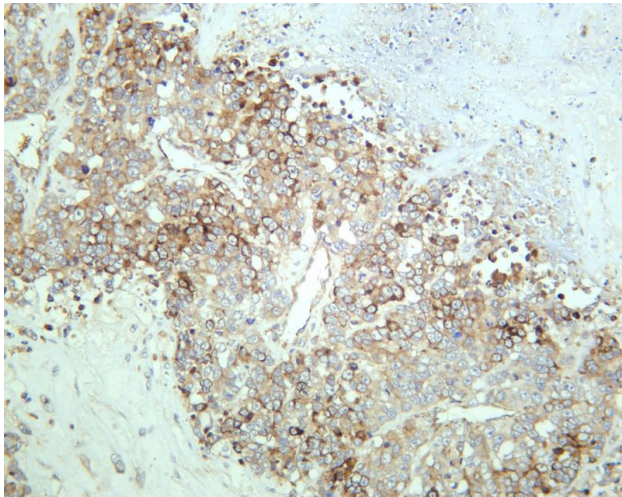
with Yersinia yopJ.,

**matters needing attention**

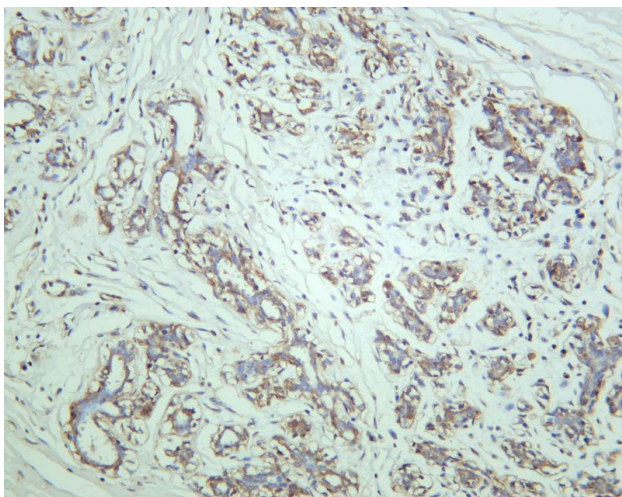
Avoid repeated freezing and thawing!

**Usage suggestions**

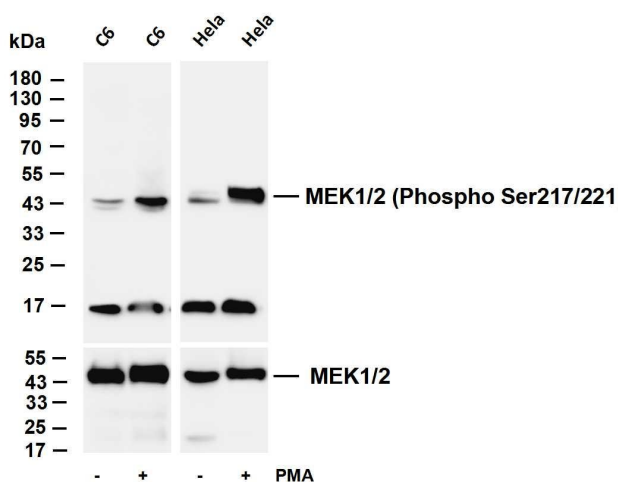
This product can be used in immunological reaction related experiments. For more information, please consult technical personnel.



Human lung carcinoma was stained with anti-MEK1/2 (Phospho Ser217/221) rabbit antibody



Human breast carcinoma was stained with anti-MEK1/2 (Phospho Ser217/221) rabbit antibody



Various whole cell lysates were separated by 4-20% SDS-PAGE, and the membrane was blotted with anti-MEK1/2 (Phospho Ser217/221) antibody. The HRP-conjugated Goat anti-Rabbit IgG(H + L) antibody was used to detect the antibody. Lane 1: C6 Lane 2: C6 was treated with Phorbol 12-myristate 13-acetate(200 nM) of 30 minutes Lane 3: HeLa Lane 4: HeLa starved of serum overnight and then treated with Phorbol 12-myristate 13-acetate(200 nM) Predicted band size: 44kDa Observed band size: 44kDa

