



# Src Family (Phospho Tyr416) Rabbit mAb

<b>Catalog No</b>	YP-rAb-18445
<b>Isotype</b>	IgG
<b>Reactivity</b>	Human,Mouse,Rat
<b>Applications</b>	WB,IF,IP,ELISA
<b>Gene Name</b>	SRC
<b>Protein Name</b>	Src Family
<b>Purification Process</b>	Protein A
<b>Specificity</b>	Phospho-Src (Y416) Antibody detects endogenous levels of c-Src protein only when phosphorylated at Y416. The name of modified sites may be influenced by many factors, such as species (the modified site was not originally found in human samples) and the change of protein sequence (the previous protein sequence is incomplete, and the protein sequence may be prolonged with the development of protein sequencing technology). When naming, we will use the "numbers" in historical reference to keep the sites consistent with the reports. The antibody binds to the following modification sequence (lowercase letters are modification sites):NEyTA
<b>Formulation</b>	PBS, 50% glycerol, 0.05% Proclin 300, 0.05%BSA
<b>Source</b>	Monoclonal, Rabbit,IgG
<b>Dilution</b>	WB 1:2000-1:10000; IF 1:200-1:1000; ELISA 1:5000-1:20000; IP 1:50-1:200;
<b>Concentration</b>	0.5 mg/ml
<b>Purity</b>	≥90%
<b>Storage Stability</b>	-15° C to -25° C/1 year(Do not lower than -25° C)
<b>Synonyms</b>	SRC ; SRC1 ; Proto-oncogene tyrosine-protein kinase Src ; Proto-oncogene c-Src ; pp60c-src ; p60-Src ; ASV ;
<b>Observed Band</b>	60kD
<b>Calculated Molecular Weight</b>	58-61kD
<b>Cell Pathway</b>	Isoform 1: Membrane; Lipid anchor. Isoform 2: Membrane; Lipid anchor. Cytoplasm.
<b>Tissue Specificity</b>	Expressed ubiquitously. Platelets, neurons and osteoclasts express 5-fold to 200-fold higher levels than most other tissues.; [Isoform 1]: Expressed in spleen and liver. ; [Isoform 2]: Expressed in brain. ; [Isoform 3]: Expressed in brain.
<b>Function</b>	Catalytic activity:ATP + a [protein]-L-tyrosine = ADP + a [protein]-L-tyrosine phosphate.,PTM:Phosphorylated on Tyr-530 by c-Src kinase (CSK). The phosphorylated form is termed pp60c-src. The phosphorylated tail interacts with the SH2 domain thereby repressing kinase activity.,similarity:Belongs to the

杭州臻优品生物科技有限公司

热销产品:

蛋白、一抗、抗体对、ELISA试剂盒、生化试剂盒  
CCK8试剂盒、QPCR检测试剂盒

检测服务:

ELISA检测及定制服务 | 生化检测 | PCR、QPCR检测 | WB检测  
ICO-IP检测 | 切片 | 染色 | 免疫组化 | 免疫荧光 | 透射电镜全套  
| 宏基因组、转录组、基因组、蛋白组、代谢组测序



关注官网



关注客服



protein kinase superfamily. Tyr protein kinase family. SRC subfamily.,similarity:Contains 1 protein kinase domain.,similarity:Contains 1 SH2 domain.,similarity:Contains 1 SH3 domain.,subunit:Interacts with DDEF1/ASAP1; via the SH3 domain. Interacts with CCPG1 (By similarity). Interacts with CDCP1, PELP1, TGFB11 and TOM1L2. Interacts with the cytoplasmic domain of MUC1, phosphorylates it and increases binding of MUC1 with beta-catenin. Interacts with RALGPS1; via the SH3 domain. Interacts with HEV ORF3 protein; via the SH3 domain.,

### Background

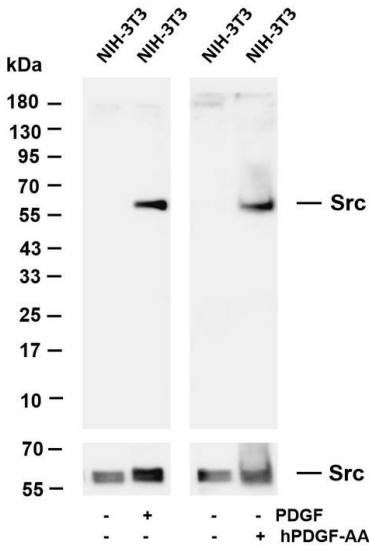
SRC Family Negative Regulatory Phosphorylation Site belongs to the protein kinase superfamily, Tyr protein kinase family, SRC subfamily. It contains one protein kinase domain, one SH2 domain and one SH3 domain. It may serve as part of a signaling pathway coupling the Fc receptor to the activation of the respiratory burst and may also contribute to neutrophil migration and may regulate the degranulation process of neutrophils. SRC Family Negative Regulatory Phosphorylation Site is expressed predominantly in cells of the myeloid and B lymphoid lineages. There are two named isoforms.

### matters needing attention

Avoid repeated freezing and thawing!

### Usage suggestions

This product can be used in immunological reaction related experiments. For more information, please consult technical personnel.



Various whole cell lysates were separated by 4-20% SDS-PAGE, and the membrane was blotted with anti-Src Family (Phospho Tyr416) antibody. The HRP-conjugated Goat anti-Rabbit IgG(H + L) antibody was used to detect the antibody. Lane 1: NIH-3T3 Lane 2: NIH-3T3 was treated with PDGF(100 ng/mL) for 10 minutes Lane 3: NIH-3T3 Lane 4: NIH-3T3 was treated with hPDGF-AA(50 ng/mL) for 30 minutes Predicted band size: 58-61kDa Observed band size: 60kDa

