



GBP1 Rabbit mAb

Catalog No	YP-rAb-18438
Isotype	IgG
Reactivity	Human
Applications	WB,IHC,IF,ELISA
Gene Name	GBP1
Protein Name	Interferon-induced guanylate-binding protein 1
Purification Process	Protein A
Specificity	Endogenous
Formulation	PBS, 50% glycerol, 0.05% Proclin 300, 0.05%BSA
Source	Monoclonal, Rabbit,IgG
Dilution	IHC 1:200-1:1000; WB 1:2000-1:10000; IF 1:200-1:1000; ELISA 1:5000-1:20000; Note: For IHC, we suggest antigen retrieval with TE buffer pH 9.0
Concentration	0.5 mg/ml
Purity	≥90%
Storage Stability	-15° C to -25° C/1 year(Do not lower than -25° C)
Synonyms	GBP1 ; Interferon-induced guanylate-binding protein 1 ; GTP-binding protein 1 ; GBP-1 ; HuGBP-1 ; Guanine nucleotide-binding protein 1
Observed Band	68kD
Calculated Molecular Weight	68kD
Cell Pathway	Cytoplasm . Golgi apparatus membrane; Lipid-anchor ; Cytoplasmic side. Cell membrane . Secreted . Cytoplasmic vesicle . Secreted from endothelial cells in the cerebrospinal fluid, upon bacterial challenge and independently of IFNG induction. Golgi membrane localization requires isoprenylation and the presence of another IFNG-induced factor.
Tissue Specificity	Placenta,Spleen,Uterus,
Function	Binds GTP, GDP and GMP.,induction:By interferon gamma during macrophage activation.,similarity:Belongs to the GBP family.,
Background	Guanylate binding protein expression is induced by interferon. Guanylate binding proteins are characterized by their ability to specifically bind guanine nucleotides (GMP, GDP, and GTP) and are distinguished from the GTP-binding proteins by the presence of 2 binding motifs rather than 3. [provided by RefSeq, Jul 2008],



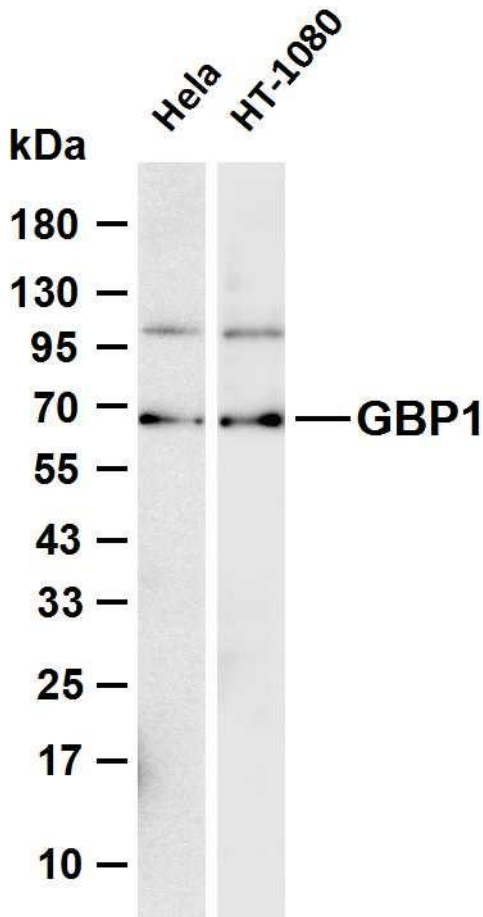


matters needing attention

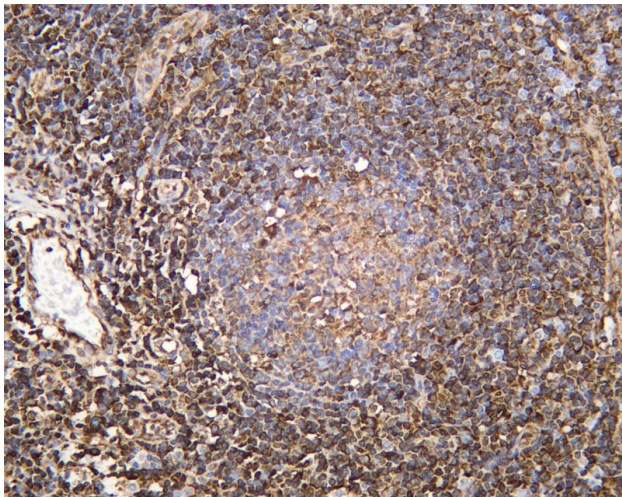
Avoid repeated freezing and thawing!

Usage suggestions

This product can be used in immunological reaction related experiments. For more information, please consult technical personnel.



Various whole cell lysates were separated by 4-20% SDS-PAGE, and the membrane was blotted with anti-GBP1 antibody. The HRP-conjugated Goat anti-Rabbit IgG (H + L) antibody was used to detect the antibody. Lane 1: HeLa Lane 2: HT-1080 Predicted band size: 68kDa Observed band size: 68kDa



Human tonsil was stained with anti-GBP1 Rabbit antibody

杭州臻优品生物科技有限公司

热销产品:

蛋白、一抗、抗体对、ELISA试剂盒、生化试剂盒
CCK8试剂盒、QPCR检测试剂盒

检测服务:

ELISA检测及定制服务 | 生化检测 | PCR、QPCR检测 | WB检测
ICO-IP检测 | 切片 | 染色 | 免疫组化 | 免疫荧光 | 透射电镜全套
| 宏基因组、转录组、基因组、蛋白组、代谢组测序



关注官网



关注客服