



FOLR1 Rabbit mAb

Catalog No	YP-rAb-18433
Isotype	IgG
Reactivity	Human,Mouse,Rat
Applications	WB,IHC,IF,ELISA
Gene Name	FOLR1
Protein Name	Folate receptor alpha
Purification Process	Protein A
Specificity	Endogenous
Formulation	PBS, 50% glycerol, 0.05% Proclin 300, 0.05%BSA
Source	Monoclonal, Rabbit,IgG
Dilution	IHC 1:200-1:500; WB 1:2000-1:10000; IF 1:200-1:1000; ELISA 1:5000-1:20000; Note: For IHC, we suggest antigen retrieval with TE buffer pH 9.0
Concentration	0.5 mg/ml
Purity	≥90%
Storage Stability	-15° C to -25° C/1 year(Do not lower than -25° C)
Synonyms	FOLR1 ; FOLR ; Folate receptor alpha ; FR-alpha ; Adult folate-binding protein ; FBP ; Folate receptor 1 ; Folate receptor ; adult ; KB cells FBP ; Ovarian tumor-associated antigen MOV18
Observed Band	35kD
Calculated Molecular Weight	30kD
Cell Pathway	Cell membrane ; Lipid-anchor, GPI-anchor . Apical cell membrane ; Lipid-anchor, GPI-anchor . Basolateral cell membrane ; Lipid-anchor, GPI-like-anchor . Secreted . Cytoplasmic vesicle . Cytoplasmic vesicle, clathrin-coated vesicle . Endosome . Endocytosed into cytoplasmic vesicles and then recycled to the cell membrane. .
Tissue Specificity	Primarily expressed in tissues of epithelial origin. Expression is increased in malignant tissues. Expressed in kidney, lung and cerebellum. Detected in placenta and thymus epithelium.
Function	Binds to folate and reduced folic acid derivatives and mediates delivery of 5-methyltetrahydrofolate to the interior of cells.,PTM:Eight disulfide bonds are present.,PTM:The secreted form is derived from the membrane-bound form either by cleavage of the GPI anchor, or/and by proteolysis catalyzed by a metalloprotease.,similarity:Belongs to the folate receptor family.,tissue specificity:Exclusively expressed in tissues of epithelial origin. Expression is





increased in malignant tissues. Expressed in kidney, lung and cerebellum.,

Background

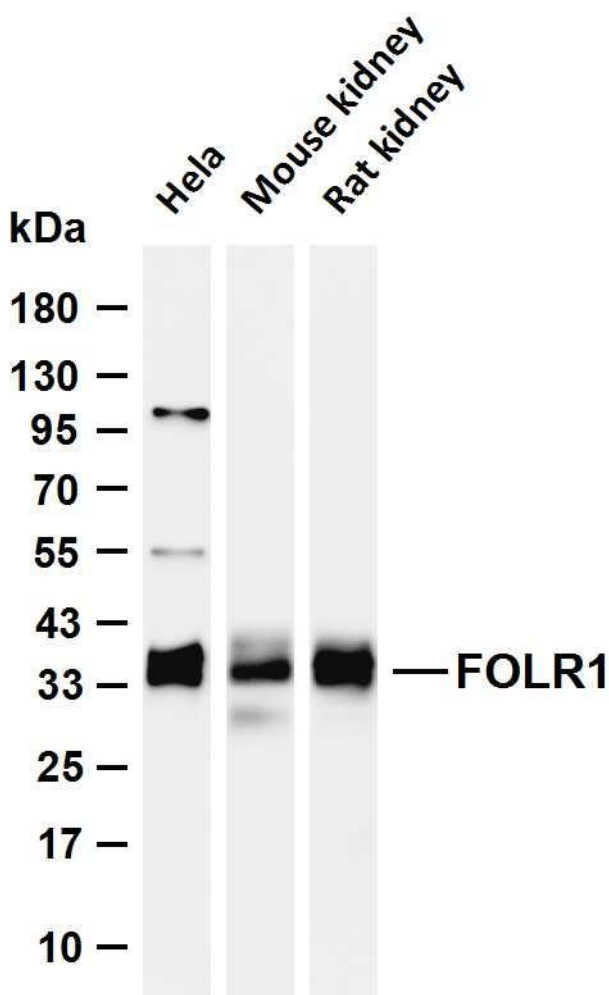
The protein encoded by this gene is a member of the folate receptor family. Members of this gene family bind folic acid and its reduced derivatives, and transport 5-methyltetrahydrofolate into cells. This gene product is a secreted protein that either anchors to membranes via a glycosyl-phosphatidylinositol linkage or exists in a soluble form. Mutations in this gene have been associated with neurodegeneration due to cerebral folate transport deficiency. Due to the presence of two promoters, multiple transcription start sites, and alternative splicing, multiple transcript variants encoding the same protein have been found for this gene. [provided by RefSeq, Oct 2009],

matters needing attention

Avoid repeated freezing and thawing!

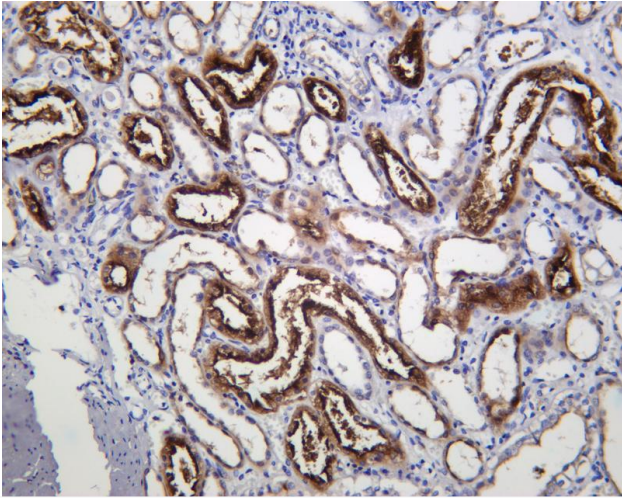
Usage suggestions

This product can be used in immunological reaction related experiments. For more information, please consult technical personnel.



Various whole cell lysates were separated by 4-20% SDS-PAGE, and the membrane was blotted with anti-FOLR1 antibody. The HRP-conjugated Goat anti-Rabbit IgG (H + L) antibody was used to detect the antibody. Lane 1: HeLa Lane 2: Mouse kidney Lane 3: Rat kidney Predicted band size: 30kDa Observed band size: 35kDa





Human kidney was stained with anti-FOLR1 Rabbit antibody

杭州臻优品生物科技有限公司

热销产品:

蛋白、一抗、抗体对、ELISA试剂盒、生化试剂盒
CCK8试剂盒、QPCR检测试剂盒

检测服务:

ELISA检测及定制服务 | 生化检测 | PCR、QPCR检测 | WB检测
ICO-IP检测 | 切片 | 染色 | 免疫组化 | 免疫荧光 | 透射电镜全套
| 宏基因组、转录组、基因组、蛋白组、代谢组测序



关注官网



关注客服