



LYPLA1 Rabbit mAb

Catalog No	YP-rAb-18431
Isotype	IgG
Reactivity	Human,Mouse,Rat
Applications	WB,IHC,IF,ELISA
Gene Name	LYPLA1
Protein Name	Acyl-protein thioesterase 1
Purification Process	Protein A
Specificity	Endogenous
Formulation	PBS, 50% glycerol, 0.05% Proclin 300, 0.05%BSA
Source	Monoclonal, Rabbit,IgG
Dilution	IHC 1:200-1:1000; WB 1:2000-1:10000; IF 1:200-1:1000; ELISA 1:5000-1:20000; Note: For IHC, we suggest antigen retrieval with TE buffer pH 9.0
Concentration	0.5 mg/ml
Purity	≥90%
Storage Stability	-15° C to -25° C/1 year(Do not lower than -25° C)
Synonyms	LYPLA1 ; APT1 ; LPL1 ; Acyl-protein thioesterase 1 ; APT-1 ; hAPT1 ; Lysophospholipase 1 ; Lysophospholipase I ; LPL-I ; LysoPLA I
Observed Band	24kD
Calculated Molecular Weight	25kD
Cell Pathway	Cytoplasm . Cell membrane . Nucleus membrane . Endoplasmic reticulum . Shows predominantly a cytoplasmic localization with a weak expression in the cell membrane, nuclear membrane and endoplasmic reticulum. .
Tissue Specificity	Platelets.
Function	Catalytic activity:Palmitoyl-protein + H(2)O = palmitate + protein.,Function:Hydrolyzes fatty acids from S-acylated cysteine residues in proteins such as trimeric G alpha proteins or HRAS. Also has low lysophospholipase activity.,similarity:Belongs to the AB hydrolase 2 family.,subunit:Homodimer.,
Background	This gene encodes a member of the alpha/beta hydrolase superfamily. The encoded protein functions as a homodimer, exhibiting both depalmitoylating as well as lysophospholipase activity, and may be involved in Ras localization and signaling. Alternate splicing results in multiple transcript variants. Pseudogenes of this gene have been defined on chromosomes 4, 6, and 7. [provided by RefSeq,





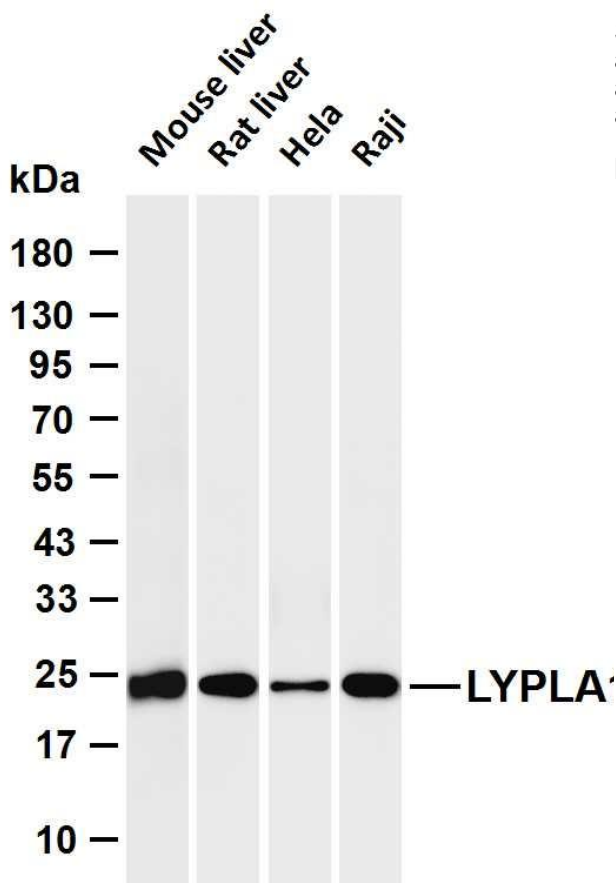
Jul 2013],

matters needing attention

Avoid repeated freezing and thawing!

Usage suggestions

This product can be used in immunological reaction related experiments. For more information, please consult technical personnel.



Various whole cell lysates were separated by 4-20% SDS-PAGE, and the membrane was blotted with anti-LYPLA1 antibody. The HRP-conjugated Goat anti-Rabbit IgG (H + L) antibody was used to detect the antibody. Lane 1: Mouse liver Lane 2: Rat liver Lane 3: HeLa Lane 4: Raji Predicted band size: 25kDa Observed band size: 24kDa

