



SREBP-2 Rabbit mAb

Catalog No	YP-rAb-18427
Isotype	IgG
Reactivity	Human,Rat
Applications	WB,IHC,IF,IP,ELISA
Gene Name	SREBF2 BHLHD2 SREBP2
Protein Name	Sterol regulatory element-binding protein 2 (SREBP-2) (Class D basic helix-loop-helix protein 2) (bHLHd2) (Sterol regulatory element-binding transcription factor 2) [Cleaved into: Processed sterol regulatory element-binding protein 2]
Purification Process	Protein A
Specificity	Endogenous
Formulation	PBS, 50% glycerol, 0.05% Proclin 300, 0.05%BSA
Source	Monoclonal, Rabbit,IgG
Dilution	IHC 1:200-1:1000; WB 1:2000-1:10000; IF 1:200-1:1000; ELISA 1:5000-1:20000; IP 1:50-1:200; Note: For IHC, we suggest antigen retrieval with TE buffer pH 9.0
Concentration	0.5 mg/ml
Purity	≥90%
Storage Stability	-15° C to -25° C/1 year(Do not lower than -25° C)
Synonyms	SRBP2 ; Sterol regulatory element-binding protein 2 ; SREBP-2 ; Class D basic helix-loop-helix protein 2 ; bHLHd2 ; Sterol regulatory element-binding transcription factor 2 ; [Cleaved into: Processed sterol regulatory element-binding protein 2]
Observed Band	130kD
Calculated Molecular Weight	124kD
Cell Pathway	[Sterol regulatory element-binding protein 2]: Endoplasmic reticulum membrane ; Multi-pass membrane protein . Golgi apparatus membrane ; Multi-pass membrane protein . Cytoplasmic vesicle, COPII-coated vesicle membrane ; Multi-pass membrane protein . At high sterol concentrations, the SCAP-SREBP is retained in the endoplasmic reticulum (PubMed:32322062). Low sterol concentrations promote recruitment into COPII-coated vesicles and transport of the SCAP-SREBP to the Golgi, where it is processed (PubMed:32322062). . ; [Processed sterol regulatory element-binding protein 2]: Nucleus . Transported into the nucleus with the help of importin-beta. Dimerization of the bHLH domain is a prerequisite for importin beta-dependent nuclear import. .
Tissue Specificity	Ubiquitously expressed in adult and fetal tissues.





Function

Transcriptional activator required for lipid homeostasis. Regulates transcription of the LDL receptor gene as well as the cholesterol and to a lesser degree the fatty acid synthesis pathway (By similarity). Binds the sterol regulatory element 1 (SRE-1) (5'-ATCACCCAC-3') found in the flanking region of the LDLR and HMG-CoA synthase genes.,PTM:At low cholesterol the SCAP/SREBP complex is recruited into COPII vesicles for export from the ER. In the Golgi complex SREBPs are cleaved sequentially by site-1 and site-2 protease. The first cleavage by site-1 protease occurs within the luminal loop, the second cleavage by site-2 protease occurs within the first transmembrane domain and releases the transcription factor from the Golgi membrane. Apoptosis triggers cleavage by the cysteine proteases caspase-3 and caspase-7.,similarity:Belongs to the SREBP family.,similarity:Contains 1 basic helix-loop-helix (bHLH) domain.,subcellular location:Moves from the endoplasmic reticulum to the Golgi in the absence of sterols.,subunit:Forms a tight complex with SCAP in the ER membrane. Efficient DNA binding of the soluble transcription factor fragment requires dimerization with another bHLH protein. Interacts with LMNA.,tissue specificity:Ubiquitously expressed in adult and fetal tissues.,

Background

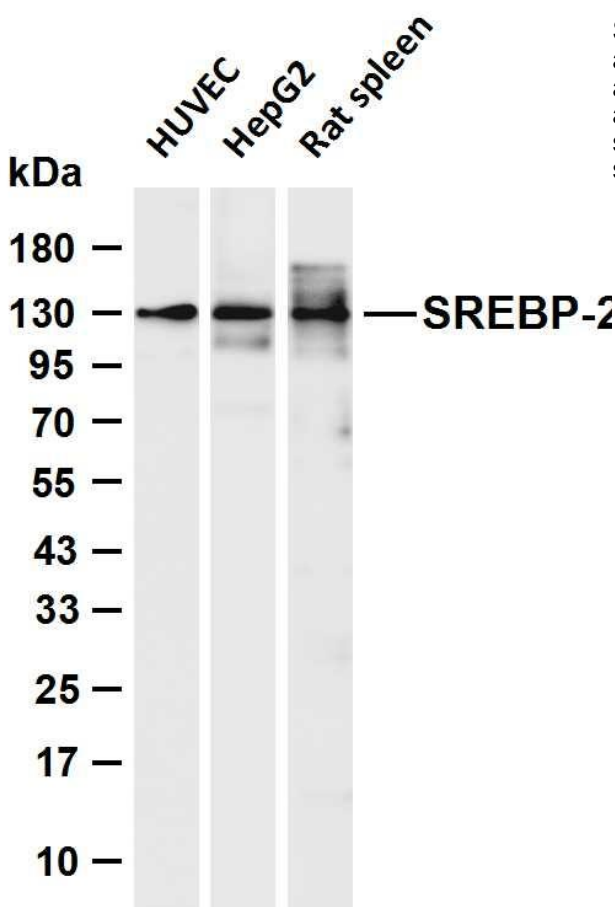
This gene encodes a member of the a ubiquitously expressed transcription factor that controls cholesterol homeostasis by regulating transcription of sterol-regulated genes. The encoded protein contains a basic helix-loop-helix-leucine zipper (bHLH-Zip) domain and binds the sterol regulatory element 1 motif. Alternate splicing results in multiple transcript variants. [provided by RefSeq, Jul 2013],

matters needing attention

Avoid repeated freezing and thawing!

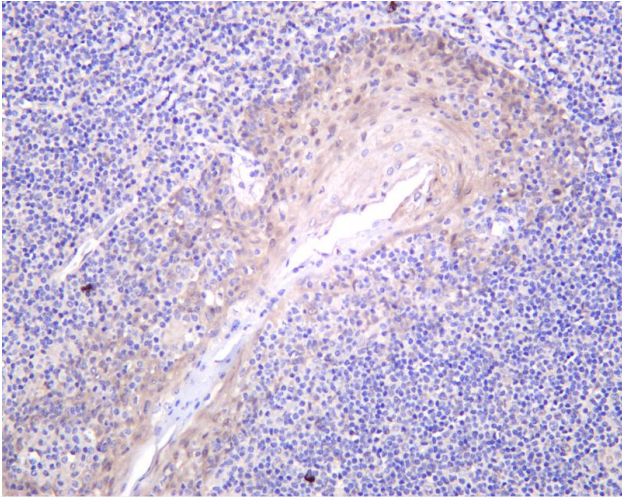
Usage suggestions

This product can be used in immunological reaction related experiments. For more information, please consult technical personnel.



Various whole cell lysates were separated by 4-20% SDS-PAGE, and the membrane was blotted with anti-SREBP-2 antibody. The HRP-conjugated Goat anti-Rabbit IgG (H + L) antibody was used to detect the antibody. Lane 1: HUVEC Lane 2: HepG2 Lane 2: Rat spleen Predicted band size: 124kDa Observed band size: 130kDa





Human tonsil was stained with anti-SREBP-2 Rabbit antibody

杭州臻优品生物科技有限公司

热销产品:

蛋白、一抗、抗体对、ELISA试剂盒、生化试剂盒
CCK8试剂盒、QPCR检测试剂盒

检测服务:

ELISA检测及定制服务 | 生化检测 | PCR、QPCR检测 | WB检测
ICO-IP检测 | 切片 | 染色 | 免疫组化 | 免疫荧光 | 透射电镜全套
| 宏基因组、转录组、基因组、蛋白组、代谢组测序



关注官网



关注客服