



# EGFL7 Rabbit mAb

<b>Catalog No</b>	YP-rAb-18422
<b>Isotype</b>	IgG
<b>Reactivity</b>	Human,Rat
<b>Applications</b>	WB,IHC,IF,ELISA
<b>Gene Name</b>	EGFL7 MEGF7 UNQ187/PRO1449
<b>Protein Name</b>	Epidermal growth factor-like protein 7 (EGF-like protein 7) (Multiple epidermal growth factor-like domains protein 7) (Multiple EGF-like domains protein 7) (NOTCH4-like protein) (Vascular endothelial statin) (VE-statin) (Zneu1)
<b>Purification Process</b>	Protein A
<b>Specificity</b>	Endogenous
<b>Formulation</b>	PBS, 50% glycerol, 0.05% Proclin 300, 0.05%BSA
<b>Source</b>	Monoclonal, Rabbit,IgG
<b>Dilution</b>	IHC 1:200-1:1000; WB 1:2000-1:10000; IF 1:200-1:1000; ELISA 1:5000-1:20000; Note: For IHC, we suggest antigen retrieval with TE buffer pH 9.0
<b>Concentration</b>	0.5 mg/ml
<b>Purity</b>	≥90%
<b>Storage Stability</b>	-15° C to -25° C/1 year(Do not lower than -25° C)
<b>Synonyms</b>	
<b>Observed Band</b>	30kD
<b>Calculated Molecular Weight</b>	30kD
<b>Cell Pathway</b>	Secreted, extracellular space .
<b>Tissue Specificity</b>	Brain,Kidney,Ovary,Uterus,
<b>Function</b>	Regulates vascular tubulogenesis in vivo. Inhibits platelet-derived growth factor (PDGF)-BB-induced smooth muscle cell migration and promotes endothelial cells adhesion to the substrate in vitro.,similarity:Contains 1 EMI domain.,similarity:Contains 2 EGF-like domains.,
<b>Background</b>	This gene encodes a secreted endothelial cell protein that contains two epidermal growth factor-like domains. The encoded protein may play a role in regulating vasculogenesis. This protein may be involved in the growth and proliferation of tumor cells. Alternate splicing results in multiple transcript variants. [provided by RefSeq, Feb 2012],



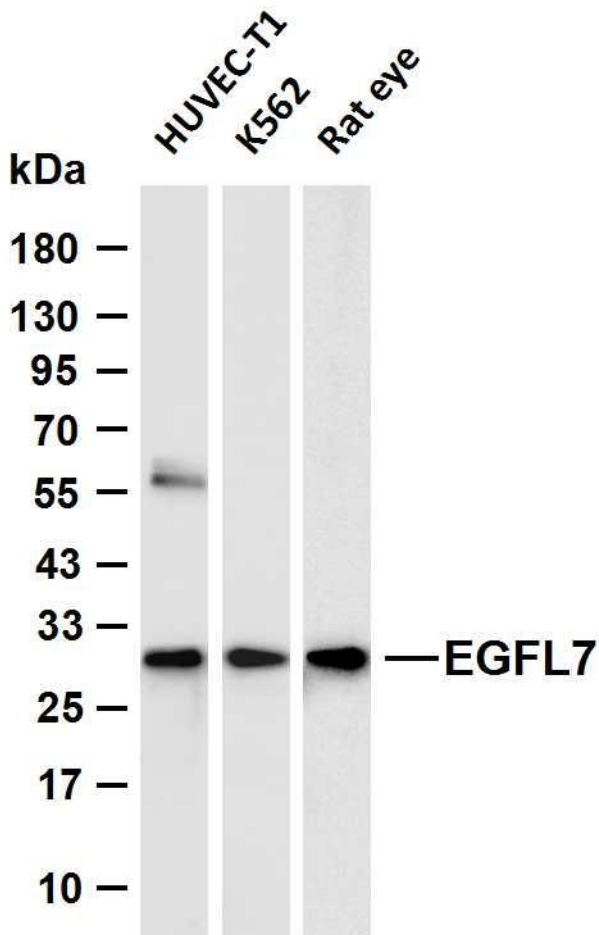


matters needing attention

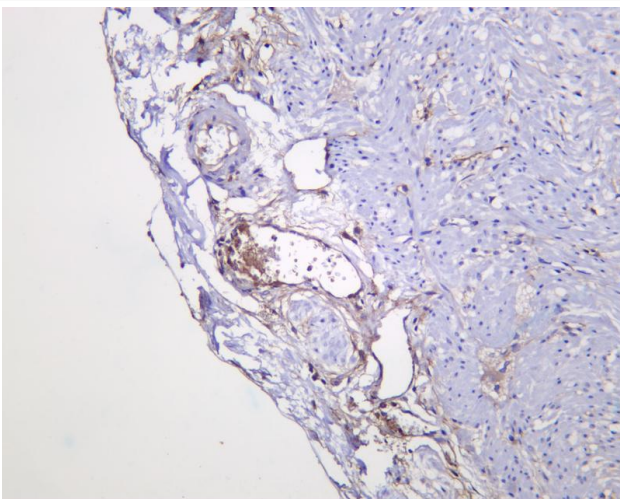
Avoid repeated freezing and thawing!

Usage suggestions

This product can be used in immunological reaction related experiments. For more information, please consult technical personnel.



Various whole cell lysates were separated by 4-20% SDS-PAGE, and the membrane was blotted with anti-EGFL7 antibody. The HRP-conjugated Goat anti-Rabbit IgG (H + L) antibody was used to detect the antibody. Lane 1: HUVEC-T1 Lane 2: K562 Lane 3: Rat eye Predicted band size: 30kDa Observed band size: 30kDa



Human appendix was stained with anti-EGFL7 Rabbit antibody

杭州臻优品生物科技有限公司

热销产品:

蛋白、一抗、抗体对、ELISA试剂盒、生化试剂盒  
CCK8试剂盒、QPCR检测试剂盒

检测服务:

ELISA检测及定制服务 | 生化检测 | PCR、QPCR检测 | WB检测  
ICO-IP检测 | 切片 | 染色 | 免疫组化 | 免疫荧光 | 透射电镜全套  
| 宏基因组、转录组、基因组、蛋白组、代谢组测序



关注官网



关注客服