



# PCYT1A Rabbit mAb

<b>Catalog No</b>	YP-rAb-18421
<b>Isotype</b>	IgG
<b>Reactivity</b>	Human,Mouse
<b>Applications</b>	WB,IHC,IF,ELISA
<b>Gene Name</b>	PCYT1A CTPCT PCYT1
<b>Protein Name</b>	Choline-phosphate cytidyltransferase A (CCT-alpha) (CTP:phosphocholine cytidyltransferase A) (CCT A) (CT A) (Phosphorylcholine transferase A)
<b>Purification Process</b>	Protein A
<b>Specificity</b>	Endogenous
<b>Formulation</b>	PBS, 50% glycerol, 0.05% Proclin 300, 0.05%BSA
<b>Source</b>	Monoclonal, Rabbit,IgG
<b>Dilution</b>	IHC 1:200-1:1000; WB 1:2000-1:10000; IF 1:200-1:1000; ELISA 1:5000-1:20000; Note: For IHC, we suggest antigen retrieval with TE buffer pH 9.0
<b>Concentration</b>	0.5 mg/ml
<b>Purity</b>	≥90%
<b>Storage Stability</b>	-15° C to -25° C/1 year(Do not lower than -25° C)
<b>Synonyms</b>	
<b>Observed Band</b>	42kD
<b>Calculated Molecular Weight</b>	42kD
<b>Cell Pathway</b>	Cytoplasm, cytosol . Membrane ; Peripheral membrane protein . Endoplasmic reticulum . Nucleus . It can interconvert between an inactive cytosolic form and an active membrane-bound form. .
<b>Tissue Specificity</b>	Brain, placenta, liver, fetal and adult lung.
<b>Function</b>	Catalytic activity:CTP + choline phosphate = diphosphate + CDP-choline.,enzyme regulation:By phosphorylation.,Function:Controls phosphatidylcholine synthesis.,pathway:Phospholipid metabolism; phosphatidylcholine biosynthesis; phosphatidylcholine from phosphocholine: step 1/2.,PTM:The serine residues of the C-terminus are phosphorylated. The inactive soluble form is stabilized by phosphorylation, the active membrane bound form is promoted by anionic lipids or diacylglycerol, and is stabilized by dephosphorylation.,similarity:Belongs to the cytidyltransferase family.,subcellular location:It can interconvert between an inactive cytosolic form and an active membrane-bound form.,subunit:Homodimer; disulfide-linked.,





### Background

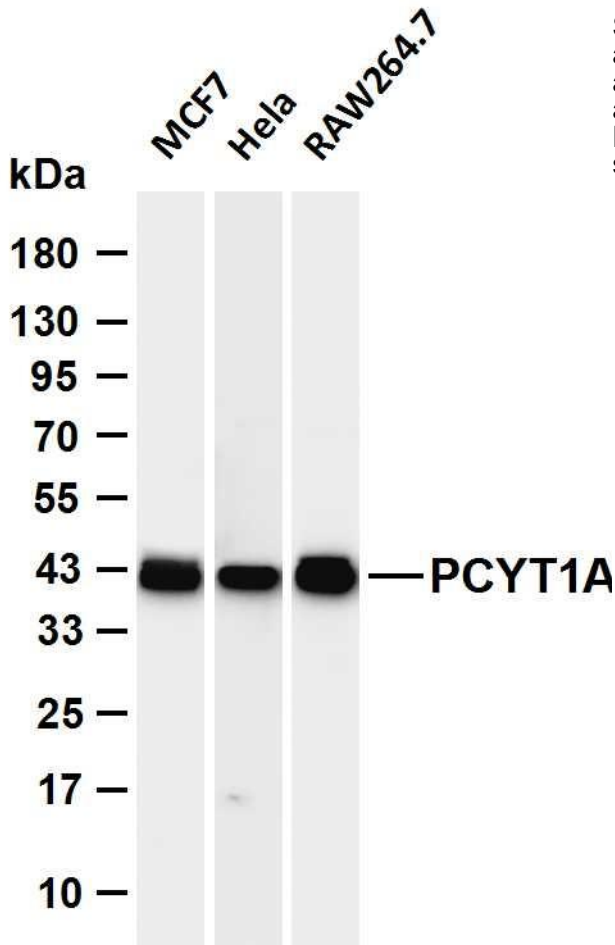
This gene belongs to the cytidyltransferase family and is involved in the regulation of phosphatidylcholine biosynthesis. Mutations in this gene are associated with spondylometaphyseal dysplasia with cone-rod dystrophy. Alternatively spliced transcript variants have been found for this gene. [provided by RefSeq, Aug 2015],

### matters needing attention

Avoid repeated freezing and thawing!

### Usage suggestions

This product can be used in immunological reaction related experiments. For more information, please consult technical personnel.



Various whole cell lysates were separated by 4-20% SDS-PAGE, and the membrane was blotted with anti-PCYT1A antibody. The HRP-conjugated Goat anti-Rabbit IgG (H + L) antibody was used to detect the antibody. Lane 1: MCF7 Lane 2: HeLa Lane 3: RAW264.7 Predicted band size: 42kDa Observed band size: 42kDa

