



# Brk Rabbit mAb

<b>Catalog No</b>	YP-rAb-18420
<b>Isotype</b>	IgG
<b>Reactivity</b>	Human
<b>Applications</b>	WB,IHC,IF,IP,ELISA
<b>Gene Name</b>	PTK6
<b>Protein Name</b>	Protein-tyrosine kinase 6
<b>Purification Process</b>	Protein A
<b>Specificity</b>	Endogenous
<b>Formulation</b>	PBS, 50% glycerol, 0.05% Proclin 300, 0.05%BSA
<b>Source</b>	Monoclonal, Rabbit,IgG
<b>Dilution</b>	IHC 1:200-1:1000; WB 1:2000-1:10000; IF 1:200-1:1000; ELISA 1:5000-1:20000; IP 1:50-1:200; Note: For IHC, we suggest antigen retrieval with TE buffer pH 9.0
<b>Concentration</b>	0.5 mg/ml
<b>Purity</b>	≥90%
<b>Storage Stability</b>	-15° C to -25° C/1 year(Do not lower than -25° C)
<b>Synonyms</b>	PTK6 ; BRK ; Protein-tyrosine kinase 6 ; Breast tumor kinase ; Tyrosine-protein kinase BRK
<b>Observed Band</b>	52kD
<b>Calculated Molecular Weight</b>	52kD
<b>Cell Pathway</b>	Cytoplasm. Nucleus. Cell projection, ruffle. Membrane . Colocalizes with KHDRBS1, KHDRBS2 or KHDRBS3, within the nucleus. Nuclear localization in epithelial cells of normal prostate but cytoplasmic localization in cancer prostate.
<b>Tissue Specificity</b>	Epithelia-specific. Very high level in colon and high levels in small intestine and prostate, and low levels in some fetal tissues. Not expressed in breast or ovarian tissue but expressed in high percentage of breast and ovarian cancers. Also overexpressed in some metastatic melanomas, lymphomas, colon cancers, squamous cell carcinomas and prostate cancers. Also found in melanocytes. Not expressed in heart, brain, placenta, lung, liver, skeletal muscle, kidney and pancreas. Isoform 2 is present in prostate epithelial cell lines derived from normal prostate and prostate adenocarcinomas, as well as in a variety of cell lines.
<b>Function</b>	Catalytic activity:ATP + a [protein]-L-tyrosine = ADP + a [protein]-L-tyrosine phosphate.,enzyme regulation:Activated enzyme seems to have greater access to its substrates.,Function:Phosphorylates KHDRBS1, KHDRBS2, KHDRBS3 and STAP2/BKS. May function as an intracellular signal transducer in epithelial tissues. Overexpression in mammary cells leads to mitogenically sensitization to

## 杭州臻优品生物科技有限公司

### 热销产品:

蛋白、一抗、抗体对、ELISA试剂盒、生化试剂盒  
CCK8试剂盒、QPCR检测试剂盒

### 检测服务:

ELISA检测及定制服务 | 生化检测 | PCR、QPCR检测 | WB检测  
| CO-IP检测 | 切片 | 染色 | 免疫组化 | 免疫荧光 | 透射电镜全套  
| 宏基因组、转录组、基因组、蛋白组、代谢组测序



关注官网



关注客服



EGF, and results in a partially transformed phenotype. Its presence in the nucleus appears to be linked to suppression of tumor progression.,PTM:Autophosphorylated. The phosphorylation of Tyr-447 may lead to the autoinhibition of the enzyme.,similarity:Belongs to the protein kinase superfamily. Tyr protein kinase family. BRK/PTK6/SIK subfamily.,similarity:Contains 1 protein kinase domain.,similarity:Contains 1 SH2 domain.,similarity:Contains 1 SH3 domain.,subcellular location:Colocalizes with KHDRBS1, KHDRBS2 or KHDRBS3, within the nucleus. In secretory epithelial cells from prostate adenocarcinoma, nuclear localization is higher in low-grade and lower in high-grade regions of the tumors.,subunit:Interacts with GAP-A.p65 (By similarity). Interacts with phosphorylated IRS4.,tissue specificity:Epithelia-specific. Very high level in colon and high levels in small intestine and prostate, and low levels in some fetal tissues. Expressed at low level in some breast tumors, but not in normal breast. Also found in melanocytes. Not expressed in heart, brain, placenta, lung, liver, skeletal muscle, kidney and pancreas.,

## Background

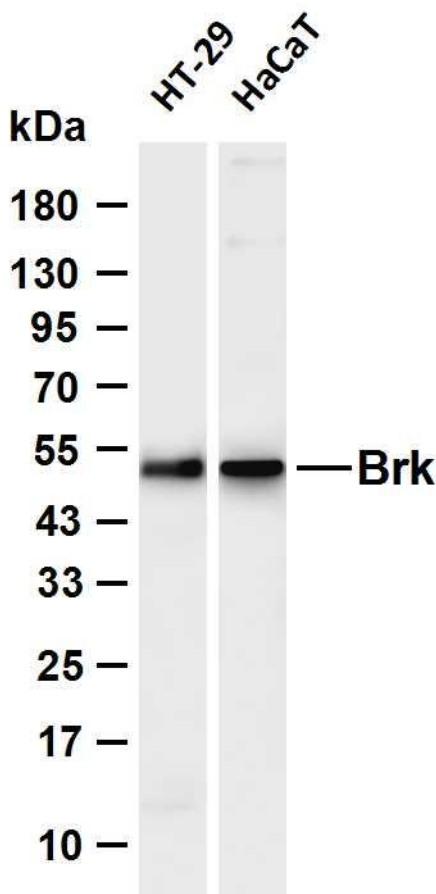
protein tyrosine kinase 6 Homo sapiens The protein encoded by this gene is a cytoplasmic nonreceptor protein kinase which may function as an intracellular signal transducer in epithelial tissues. Overexpression of this gene in mammary epithelial cells leads to sensitization of the cells to epidermal growth factor and results in a partially transformed phenotype. Expression of this gene has been detected at low levels in some breast tumors but not in normal breast tissue. The encoded protein has been shown to undergo autophosphorylation. Alternative splicing results in multiple transcript variants. [provided by RefSeq, Jan 2012],

## matters needing attention

Avoid repeated freezing and thawing!

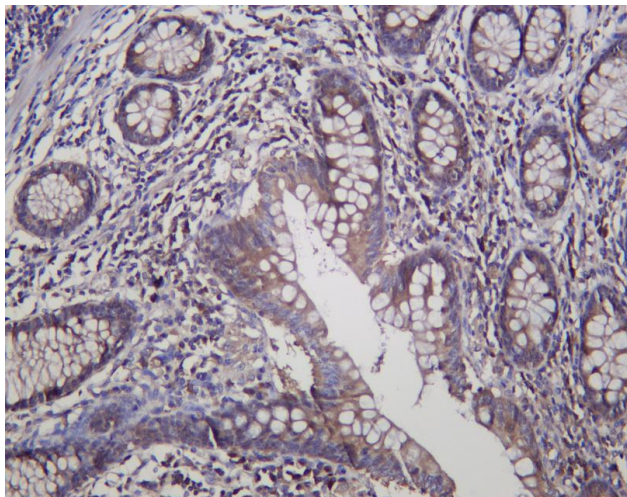
## Usage suggestions

This product can be used in immunological reaction related experiments. For more information, please consult technical personnel.



Various whole cell lysates were separated by 4-20% SDS-PAGE, and the membrane was blotted with anti-Brk antibody. The HRP-conjugated Goat anti-Rabbit IgG (H + L) antibody was used to detect the antibody. Lane 1: HT-29 Lane 2: HaCaT Predicted band size: 52kDa Observed band size: 52kDa





Human appendix was stained with anti-Brk Rabbit antibody

## 杭州臻优品生物科技有限公司

### 热销产品:

蛋白、一抗、抗体对、ELISA试剂盒、生化试剂盒  
CCK8试剂盒、QPCR检测试剂盒

### 检测服务:

ELISA检测及定制服务 | 生化检测 | PCR、QPCR检测 | WB检测  
ICO-IP检测 | 切片 | 染色 | 免疫组化 | 免疫荧光 | 透射电镜全套  
| 宏基因组、转录组、基因组、蛋白组、代谢组测序



关注官网



关注客服