



# p70 S6 kinase $\beta$ (Phospho Ser371) Rabbit mAb

<b>Catalog No</b>	YP-rAb-18414
<b>Isotype</b>	IgG
<b>Reactivity</b>	Human,Mouse,Rat
<b>Applications</b>	WB,IHC,IF,ELISA
<b>Gene Name</b>	RPS6KB2
<b>Protein Name</b>	Ribosomal protein S6 kinase beta-2
<b>Purification Process</b>	Protein A
<b>Specificity</b>	Phospho-p70 S6 kinase $\beta$ (S371) Antibody detects endogenous levels of p70 S6 kinase $\beta$ protein only when phosphorylated at S371. The name of modified sites may be influenced by many factors, such as species (the modified site was not originally found in human samples) and the change of protein sequence (the previous protein sequence is incomplete, and the protein sequence may be prolonged with the development of protein sequencing technology). When naming, we will use the "numbers" in historical reference to keep the sites consistent with the reports. The antibody binds to the following modification sequence (lowercase letters are modification sites):DSpDD
<b>Formulation</b>	PBS, 50% glycerol, 0.05% Proclin 300, 0.05%BSA
<b>Source</b>	Monoclonal, Rabbit,IgG
<b>Dilution</b>	IHC 1:500-1:2000; WB 1:2000-1:10000; IF 1:200-1:1000; ELISA 1:5000-1:20000; Note: For IHC, we suggest antigen retrieval with TE buffer pH 9.0
<b>Concentration</b>	0.5 mg/ml
<b>Purity</b>	$\geq 90\%$
<b>Storage Stability</b>	-15° C to -25° C/1 year(Do not lower than -25° C)
<b>Synonyms</b>	RPS6KB2 ; STK14B ; Ribosomal protein S6 kinase beta-2 ; S6K-beta-2 ; S6K2 ; 70 kDa ribosomal protein S6 kinase 2 ; P70S6K2 ; p70-S6K 2 ; S6 kinase-related kinase ; SRK ; Serine/threonine-protein kinase 14B ; p70 ribosomal S6 kinase beta ; S6K-beta ; p70
<b>Observed Band</b>	60kD
<b>Calculated Molecular Weight</b>	53kD
<b>Cell Pathway</b>	Cytoplasm. Nucleus.
<b>Tissue Specificity</b>	Brain,Epithelium,Lymph,
<b>Function</b>	Catalytic activity:ATP + a protein = ADP + a phosphoprotein.,Function:Phosphorylates specifically ribosomal protein

杭州臻优品生物科技有限公司

热销产品:

蛋白、一抗、抗体对、ELISA试剂盒、生化试剂盒  
CCK8试剂盒、QPCR检测试剂盒

检测服务:

ELISA检测及定制服务 | 生化检测 | PCR、QPCR检测 | WB检测  
ICO-IP检测 | 切片 | 染色 | 免疫组化 | 免疫荧光 | 透射电镜全套  
| 宏基因组、转录组、基因组、蛋白组、代谢组测序



关注官网



关注客服



S6.,PTM:Phosphorylated upon DNA damage, probably by ATM or ATR.,similarity:Belongs to the protein kinase superfamily.,similarity:Belongs to the protein kinase superfamily. AGC Ser/Thr protein kinase family. S6 kinase subfamily.,similarity:Contains 1 AGC-kinase C-terminal domain.,similarity:Contains 1 protein kinase domain.,

### Background

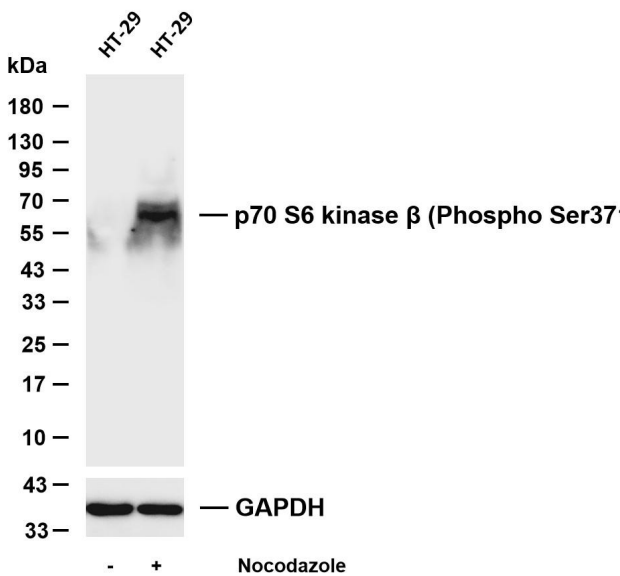
ribosomal protein S6 kinase B2(RPS6KB2) Homo sapiens This gene encodes a member of the RSK (ribosomal S6 kinase) family of serine/threonine kinases. This kinase contains a kinase catalytic domain and phosphorylates the S6 ribosomal protein and eukaryotic translation initiation factor 4B (eIF4B). Phosphorylation of S6 leads to an increase in protein synthesis and cell proliferation. [provided by RefSeq, Jan 2015],

### matters needing attention

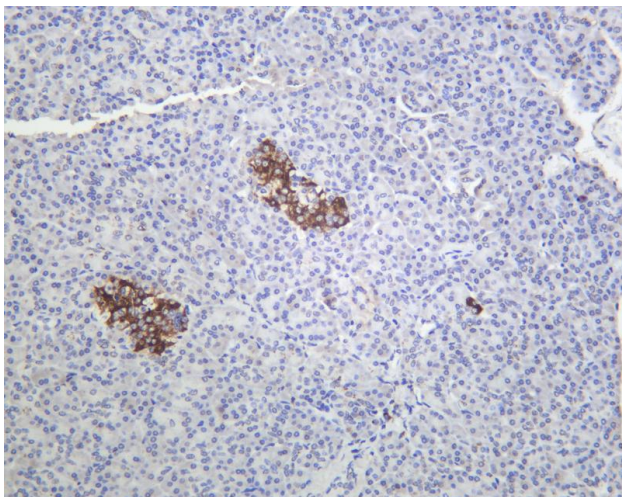
Avoid repeated freezing and thawing!

### Usage suggestions

This product can be used in immunological reaction related experiments. For more information, please consult technical personnel.

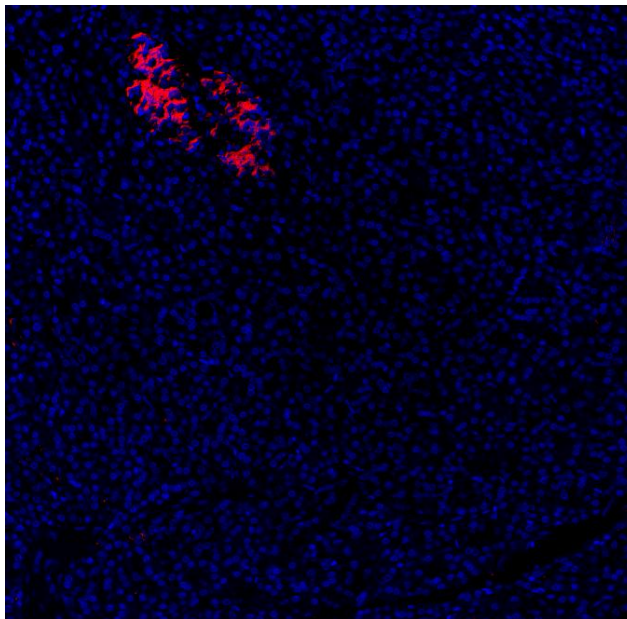


Various whole cell lysates were separated by 4-20% SDS-PAGE, and the membrane was blotted with anti-p70 S6 kinase  $\beta$  (Phospho Ser371) antibody. The HRP-conjugated Goat anti-Rabbit IgG (H + L) antibody was used to detect the antibody. Lane 1: HT-29 Lane 2: HT-29 was treated with Nocodazole(50ng/ml) for 48 hou



Human pancreas was stained with anti-p70 S6 kinase  $\beta$  (Phospho Ser371) Rabbit antibody





Immunofluorescence analysis of Human pancreas

## 杭州臻优品生物科技有限公司

### 热销产品:

蛋白、一抗、抗体对、ELISA试剂盒、生化试剂盒  
CCK8试剂盒、QPCR检测试剂盒

### 检测服务:

ELISA检测及定制服务 | 生化检测 | PCR、QPCR检测 | WB检测  
ICO-IP检测 | 切片 | 染色 | 免疫组化 | 免疫荧光 | 透射电镜全套  
| 宏基因组、转录组、基因组、蛋白组、代谢组测序



关注官网



关注客服