



# Glycogen synthase 1 (Phospho Ser641) Rabbit mAb

<b>Catalog No</b>	YP-rAb-18352
<b>Isotype</b>	IgG
<b>Reactivity</b>	Human,Mouse,Rat
<b>Applications</b>	WB,IHC,IF,IP,ELISA
<b>Gene Name</b>	GYS1
<b>Protein Name</b>	Glycogen [starch] synthase muscle
<b>Purification Process</b>	Protein A
<b>Specificity</b>	Glycogen synthase 1(Phospho Ser641) Antibody detects endogenous levels of Glycogen Synthase 1 protein only when phosphorylated at S641.The name of modified sites may be influenced by many factors, such as species (the modified site was not originally found in human samples) and the change of protein sequence (the previous protein sequence is incomplete, and the protein sequence may be prolonged with the development of protein sequencing technology). When naming, we will use the "numbers" in historical reference to keep the sites consistent with the reports. The antibody binds to the following modification sequence (lowercase letters are modification sites):PAsVP
<b>Formulation</b>	PBS, 50% glycerol, 0.05% Proclin 300, 0.05%BSA
<b>Source</b>	Monoclonal, Rabbit,IgG
<b>Dilution</b>	IHC 1:200-1:1000; WB 1:2000-1:10000; IF 1:200-1:1000; ELISA 1:5000-1:20000; IP 1:50-1:200; Note: For IHC, we suggest antigen retrieval with TE buffer pH 9.0
<b>Concentration</b>	0.5 mg/ml
<b>Purity</b>	≥90%
<b>Storage Stability</b>	-15° C to -25° C/1 year(Do not lower than -25° C)
<b>Synonyms</b>	GYS1 ; GYS ; Glycogen [starch] synthase ; muscle
<b>Observed Band</b>	84kD
<b>Calculated Molecular Weight</b>	84kD
<b>Cell Pathway</b>	cytosol,membrane,inclusion body,
<b>Tissue Specificity</b>	Endometrium,Heart,Kidney,Lymph,Muscle,Skin,
<b>Function</b>	Catalytic activity:UDP-glucose ((1->4)-alpha-D-glucosyl)(n) = UDP + ((1->4)-alpha-D-glucosyl)(n+1).,Disease:Defects in GYS1 are the cause of muscle glycogen storage disease type 0 (GSD0b) [MIM:611556]; also called muscle glycogen synthase deficiency. GSD0 is a metabolic disorder characterized by fasting hypoglycemia presenting in infancy or early childhood. The role of muscle glycogen is to provide critical energy during bursts of activity

杭州臻优品生物科技有限公司

热销产品:

蛋白、一抗、抗体对、ELISA试剂盒、生化试剂盒  
CCK8试剂盒、QPCR检测试剂盒

检测服务:

ELISA检测及定制服务 | 生化检测 | PCR、QPCR检测 | WB检测  
ICO-IP检测 | 切片 | 染色 | 免疫组化 | 免疫荧光 | 透射电镜全套  
| 宏基因组、转录组、基因组、蛋白组、代谢组测序



关注官网



关注客服



and sustained muscle work.,enzyme regulation:Allosteric activation by glucose-6-phosphate. Phosphorylation reduces the activity towards UDP-glucose. When in the non-phosphorylated state, glycogen synthase does not require glucose-6-phosphate as an allosteric activator; when phosphorylated it does.,Function:Transfers the glycosyl residue from UDP-Glc to the non-reducing end of alpha-1,4-glucan.,pathway:Glycan biosynthesis; glycogen biosynthesis.,similarity:Belongs to the glycosyltransferase 3 family.,

### Background

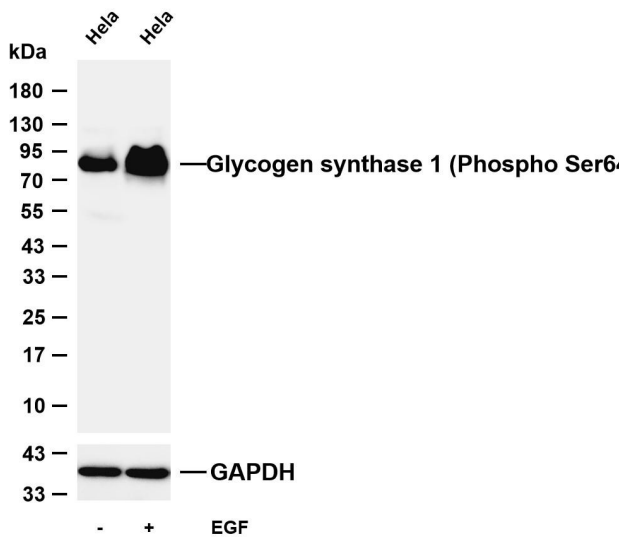
The protein encoded by this gene catalyzes the addition of glucose monomers to the growing glycogen molecule through the formation of alpha-1,4-glycoside linkages. Mutations in this gene are associated with muscle glycogen storage disease. Alternatively spliced transcript variants encoding different isoforms have been found for this gene.[provided by RefSeq, Sep 2009],

### matters needing attention

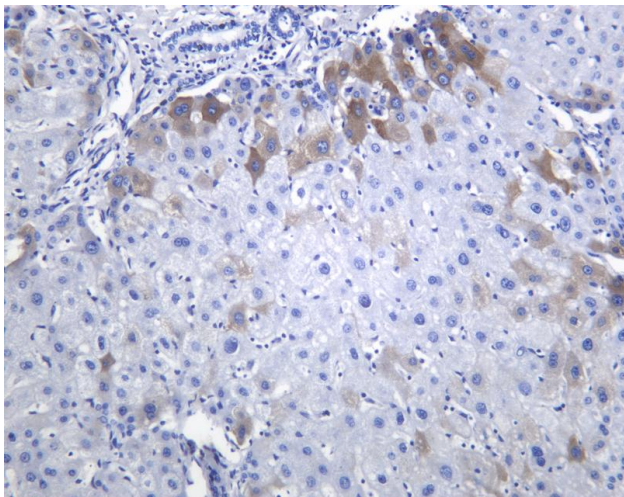
Avoid repeated freezing and thawing!

### Usage suggestions

This product can be used in immunological reaction related experiments. For more information, please consult technical personnel.



Various whole cell lysates were separated by 4-20% SDS-PAGE, and the membrane was blotted with anti-Glycogen synthase 1 (Phospho Ser641) antibody. The HRP-conjugated Goat anti-Rabbit IgG (H + L) antibody was used to detect the antibody. Lane 1: HeLa Lane 2: HeLa was treated with EGF(100ng/ml) for 20 minutes Predicted band size: 84kDa Observed band size: 84kDa



Human liver was stained with anti-Glycogen synthase 1 (Phospho Ser641) Rabbit antibody

