



ATR (Phospho Ser428) Rabbit mAb

Catalog No	YP-rAb-18349
Isotype	IgG
Reactivity	Human,Mouse,Rat
Applications	WB,IHC,IF,ELISA
Gene Name	ATR
Protein Name	Serine/threonine-protein kinase ATR
Purification Process	Protein A
Specificity	ATR (Phospho Ser428) Antibody detects endogenous levels of ATR protein only when phosphorylated at S428.The name of modified sites may be influenced by many factors, such as species (the modified site was not originally found in human samples) and the change of protein sequence (the previous protein sequence is incomplete, and the protein sequence may be prolonged with the development of protein sequencing technology). When naming, we will use the "numbers" in historical reference to keep the sites consistent with the reports. The antibody binds to the following modification sequence (lowercase letters are modification sites):GlsPK
Formulation	PBS, 50% glycerol, 0.05% Proclin 300, 0.05%BSA
Source	Monoclonal, Rabbit,IgG
Dilution	IHC 1:200-1:1000; WB 1:500-1:2000; IF 1:200-1:1000; ELISA 1:5000-1:20000; Note: For IHC, we suggest antigen retrieval with TE buffer pH 9.0
Concentration	0.5 mg/ml
Purity	≥90%
Storage Stability	-15° C to -25° C/1 year(Do not lower than -25° C)
Synonyms	ATR ; FRP1 ; Serine/threonine-protein kinase ATR ; Ataxia telangiectasia and Rad3-related protein ; FRAP-related protein 1
Observed Band	290kD
Calculated Molecular Weight	301kD
Cell Pathway	Nucleus . Chromosome . Depending on the cell type, it can also be found in PML nuclear bodies. Recruited to chromatin during S-phase. Redistributes to discrete nuclear foci upon DNA damage, hypoxia or replication fork stalling.
Tissue Specificity	Ubiquitous, with highest expression in testis. Isoform 2 is found in pancreas, placenta and liver but not in heart, testis and ovary.
Function	Catalytic activity:ATP + a protein = ADP + a phosphoprotein.,cofactor:Manganese.,Disease:Defects in ATR are a cause of Seckel syndrome type 1 (SCKL1) [MIM:210600]. SCKL1 is a rare autosomal recessive disorder characterized by growth retardation, microcephaly with mental

杭州臻优品生物科技有限公司

热销产品:

蛋白、一抗、抗体对、ELISA试剂盒、生化试剂盒
CCK8试剂盒、QPCR检测试剂盒

检测服务:

ELISA检测及定制服务 | 生化检测 | PCR、QPCR检测 | WB检测
ICO-IP检测 | 切片 | 染色 | 免疫组化 | 免疫荧光 | 透射电镜全套
| 宏基因组、转录组、基因组、蛋白组、代谢组测序



关注官网



关注客服



retardation, and a characteristic 'bird-headed' facial appearance. enzyme regulation: Activated by DNA and inhibited by BCR-ABL oncogene. Slightly activated by ATRIP. Inhibited by caffeine, wortmannin and LY294002. Function: Serine/threonine protein kinase which activates checkpoint signaling upon genotoxic stresses such as ionizing radiation (IR), ultraviolet light (UV), or DNA replication stalling, thereby acting as a DNA damage sensor. Recognizes the substrate consensus sequence [ST]-Q. Phosphorylates BRCA1, CHEK1, MCM2, RAD17, RPA2, SMC1 and TP53/p53, which collectively inhibit DNA replication and mitosis and promote DNA repair, recombination and apoptosis. Phosphorylates 'Ser-139' of histone variant H2AX/H2AFX at sites of DNA damage, thereby regulating DNA damage response mechanism. Required for FANCD2 ubiquitination. Critical for maintenance of fragile site stability and efficient regulation of centrosome duplication. PTM: Phosphorylated; autophosphorylates in vitro. similarity: Belongs to the PI3/PI4-kinase family. ATM subfamily. similarity: Contains 1 FAT domain. similarity: Contains 1 FATC domain. similarity: Contains 1 PI3K/PI4K domain. similarity: Contains 2 HEAT repeats. subcellular location: Depending on the cell type, it can also be found in PML nuclear bodies. Recruited to chromatin during S-phase. Redistributes to discrete nuclear foci upon DNA damage, hypoxia or replication fork stalling. subunit: Forms a heterodimer with ATRIP. Binds to DNA, and to UV-damaged DNA with higher affinity. Interacts with RAD17, MSH2 and HDAC2. Present in a complex containing ATRIP and RPA-coated single-stranded DNA. Present in a complex containing CHD4 and HDAC2. Interacts with BCR-ABL after genotoxic stress. Interacts with EEF1E1. This interaction is enhanced by UV irradiation. Interacts with CLSPN and CEP164. tissue specificity: Ubiquitous, with highest expression in testis. Isoform 2 is found in pancreas, placenta and liver but not in heart, testis and ovary.

Background

The protein encoded by this gene belongs to the PI3/PI4-kinase family, and is most closely related to ATM, a protein kinase encoded by the gene mutated in ataxia telangiectasia. This protein and ATM share similarity with *Schizosaccharomyces pombe rad3*, a cell cycle checkpoint gene required for cell cycle arrest and DNA damage repair in response to DNA damage. This kinase has been shown to phosphorylate checkpoint kinase CHK1, checkpoint proteins RAD17, and RAD9, as well as tumor suppressor protein BRCA1. Mutations of this gene are associated with Seckel syndrome. An alternatively spliced transcript variant of this gene has been reported, however, its full length nature is not known. Transcript variants utilizing alternative polyA sites exist. [provided by RefSeq, Jul 2008]

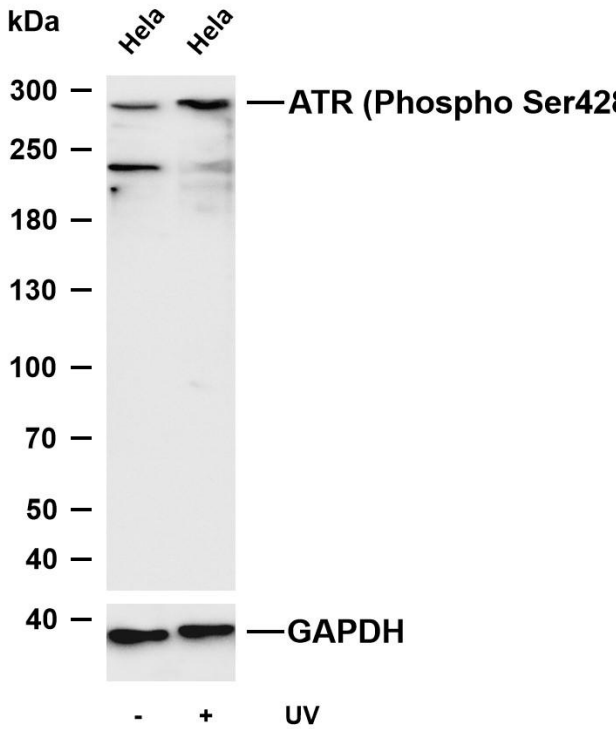
matters needing attention

Avoid repeated freezing and thawing!

Usage suggestions

This product can be used in immunological reaction related experiments. For more information, please consult technical personnel.





Various whole cell lysates were separated by 4-8% SDS-PAGE, and the membrane was blotted with anti-ATR (Phospho Ser428) antibody. The HRP-conjugated Goat anti-Rabbit IgG (H + L) antibody was used to detect the antibody. Lane 1: HeLa Lane 2: HeLa treated with UV for 1 hour, then recovered for 1 hour. Predicted band size: 301kDa Observed band size: 290kDa

