



# Integrin $\beta$ 2 (Phospho Ser745) Rabbit mAb

<b>Catalog No</b>	YP-rAb-18348
<b>Isotype</b>	IgG
<b>Reactivity</b>	Human,Mouse,Rat
<b>Applications</b>	WB,IHC,IF,IP,ELISA
<b>Gene Name</b>	ITGB2
<b>Protein Name</b>	Integrin beta-2
<b>Purification Process</b>	Protein A
<b>Specificity</b>	Integrin $\beta$ 2 (Phospho Ser745) Antibody detects endogenous levels of Integrin $\beta$ 2 protein only when phosphorylated at T745. The name of modified sites may be influenced by many factors, such as species (the modified site was not originally found in human samples) and the change of protein sequence (the previous protein sequence is incomplete, and the protein sequence may be prolonged with the development of protein sequencing technology). When naming, we will use the "numbers" in historical reference to keep the sites consistent with the reports. The antibody binds to the following modification sequence (lowercase letters are modification sites):LKsQW
<b>Formulation</b>	PBS, 50% glycerol, 0.05% Proclin 300, 0.05%BSA
<b>Source</b>	Monoclonal, Rabbit,IgG
<b>Dilution</b>	IHC 1:200-1:1000; WB 1:2000-1:10000; IF 1:200-1:1000; ELISA 1:5000-1:20000; IP 1:50-1:200; Note: For IHC, we suggest antigen retrieval with TE buffer pH 9.0
<b>Concentration</b>	0.5 mg/ml
<b>Purity</b>	$\geq$ 90%
<b>Storage Stability</b>	-15° C to -25° C/1 year(Do not lower than -25° C)
<b>Synonyms</b>	ITGB2 ; CD18 ; MF17 ; Integrin beta-2 ; Cell surface adhesion glycoproteins LFA-1/CR3/p150 ; 95 subunit beta ; Complement receptor C3 subunit beta ; CD antigen CD18
<b>Observed Band</b>	85kD
<b>Calculated Molecular Weight</b>	85kD
<b>Cell Pathway</b>	Cell membrane ; Single-pass type I membrane protein . Membrane raft ; Single-pass type I membrane protein .
<b>Tissue Specificity</b>	Leukocytes (PubMed:23775590). Expressed in neutrophils (at protein level) (PubMed:21193407, PubMed:28807980).
<b>Function</b>	Disease:Defects in ITGB2 are the cause of leukocyte adhesion deficiency type I (LAD1) [MIM:116920]. LAD1 patients have recurrent bacterial infections and their leukocytes are deficient in a wide range of adhesion-dependent

杭州臻优品生物科技有限公司

热销产品:

蛋白、一抗、抗体对、ELISA试剂盒、生化试剂盒  
CCK8试剂盒、QPCR检测试剂盒

检测服务:

ELISA检测及定制服务 | 生化检测 | PCR、QPCR检测 | WB检测  
ICO-IP检测 | 切片 | 染色 | 免疫组化 | 免疫荧光 | 透射电镜全套  
| 宏基因组、转录组、基因组、蛋白组、代谢组测序



关注官网



关注客服



functions.,Function: Integrin alpha-L/beta-2 is a receptor for ICAM1, ICAM2, ICAM3 and ICAM4. Integrins alpha-M/beta-2 and alpha-X/beta-2 are receptors for the iC3b fragment of the third complement component and for fibrinogen. Integrin alpha-X/beta-2 recognizes the sequence G-P-R in fibrinogen alpha-chain. Integrin alpha-M/beta-2 recognizes P1 and P2 peptides of fibrinogen gamma chain. Integrin alpha-M/beta-2 is also a receptor for factor X. Integrin alpha-D/beta-2 is a receptor for ICAM3 and VCAM1.,online information:ITGB2 mutation db,PTM:Both Ser-745 and Ser-756 become phosphorylated when T-cells are exposed to phorbol esters. Phosphorylation on Thr-758 (but not on Ser-756) allows interaction with 14-3-3 proteins.,similarity:Belongs to the integrin beta chain family.,similarity:Contains 1 VWFA domain.,subunit:Heterodimer of an alpha and a beta subunit. Beta-2 associates with either alpha-L, alpha-M, alpha-X or alpha-D. Interacts with COPS5 and RANBP9.,

## Background

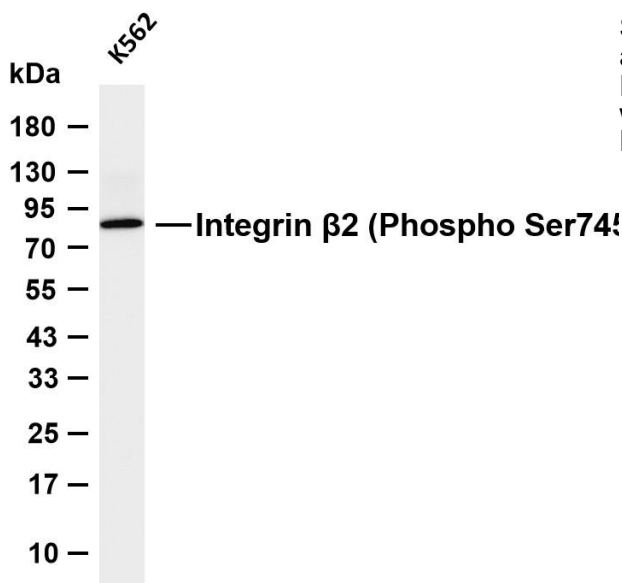
This gene encodes an integrin beta chain, which combines with multiple different alpha chains to form different integrin heterodimers. Integrins are integral cell-surface proteins that participate in cell adhesion as well as cell-surface mediated signalling. The encoded protein plays an important role in immune response and defects in this gene cause leukocyte adhesion deficiency. Alternative splicing results in multiple transcript variants. [provided by RefSeq, Dec 2014],

## matters needing attention

Avoid repeated freezing and thawing!

## Usage suggestions

This product can be used in immunological reaction related experiments. For more information, please consult technical personnel.



Various whole cell lysates were separated by 4-20% SDS-PAGE, and the membrane was blotted with anti-Integrin  $\beta$  2 (Phospho Ser745) antibody. The HRP-conjugated Goat anti-Rabbit IgG (H + L) antibody was used to detect the antibody. Lane 1: K562  
Predicted band size: 85kDa Observed band size: 85kDa

