



# PLC $\gamma$ 2 (Phospho Tyr1217) Rabbit mAb

<b>Catalog No</b>	YP-rAb-18343
<b>Isotype</b>	IgG
<b>Reactivity</b>	Human
<b>Applications</b>	WB,IF,ELISA
<b>Gene Name</b>	PLCG2
<b>Protein Name</b>	1-phosphatidylinositol 4,5-bisphosphate phosphodiesterase gamma-2
<b>Purification Process</b>	Protein A
<b>Specificity</b>	PLC $\gamma$ 2 (Phospho Tyr1217) Antibody detects endogenous levels of PLC $\gamma$ 2 protein only when phosphorylated at Y1217. The name of modified sites may be influenced by many factors, such as species (the modified site was not originally found in human samples) and the change of protein sequence (the previous protein sequence is incomplete, and the protein sequence may be prolonged with the development of protein sequencing technology). When naming, we will use the "numbers" in historical reference to keep the sites consistent with the reports. The antibody binds to the following modification sequence (lowercase letters are modification sites):FLyDT
<b>Formulation</b>	PBS, 50% glycerol, 0.05% Proclin 300, 0.05%BSA
<b>Source</b>	Monoclonal, Rabbit,IgG
<b>Dilution</b>	WB 1:500-1:2000; IF 1:200-1:1000; ELISA 1:5000-1:20000;
<b>Concentration</b>	0.5 mg/ml
<b>Purity</b>	$\geq$ 90%
<b>Storage Stability</b>	-15° C to -25° C/1 year(Do not lower than -25° C)
<b>Synonyms</b>	PLCG2 ; 1-phosphatidylinositol 4 ; 5-bisphosphate phosphodiesterase gamma-2 ; Phosphoinositide phospholipase C-gamma-2 ; Phospholipase C-IV ; PLC-IV ; Phospholipase C-gamma-2 ; PLC-gamma-2
<b>Observed Band</b>	150kD
<b>Calculated Molecular Weight</b>	148kD
<b>Cell Pathway</b>	intracellular,cytosol,plasma membrane,extracellular exosome,
<b>Tissue Specificity</b>	Lymph,Lymphoblast,Spleen,T-cell,
<b>Function</b>	Catalytic activity:1-phosphatidyl-1D-myo-inositol 4,5-bisphosphate + H(2)O = 1D-myo-inositol 1,4,5-trisphosphate + diacylglycerol.,cofactor:Calcium.,Function:The production of the second messenger molecules diacylglycerol (DAG) and inositol 1,4,5-trisphosphate (IP3)

杭州臻优品生物科技有限公司

热销产品:

蛋白、一抗、抗体对、ELISA试剂盒、生化试剂盒  
CCK8试剂盒、QPCR检测试剂盒

检测服务:

ELISA检测及定制服务 | 生化检测 | PCR、QPCR检测 | WB检测  
ICO-IP检测 | 切片 | 染色 | 免疫组化 | 免疫荧光 | 透射电镜全套  
| 宏基因组、转录组、基因组、蛋白组、代谢组测序



关注官网



关注客服



is mediated by activated phosphatidylinositol-specific phospholipase C enzymes. It is a crucial enzyme in transmembrane signaling.,PTM:Phosphorylated on tyrosine residues; upon ligand-induced activation of a variety of growth factor receptors and immune system receptors. Increases phospholipase activity.,similarity:Contains 1 C2 domain.,similarity:Contains 1 PH domain.,similarity:Contains 1 PI-PLC X-box domain.,similarity:Contains 1 PI-PLC Y-box domain.,similarity:Contains 1 SH3 domain.,similarity:Contains 2 SH2 domains.,

### Background

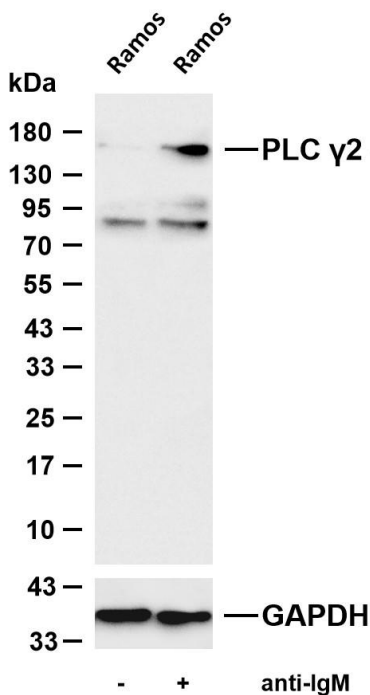
The protein encoded by this gene is a transmembrane signaling enzyme that catalyzes the conversion of 1-phosphatidyl-1D-myo-inositol 4,5-bisphosphate to 1D-myo-inositol 1,4,5-trisphosphate (IP3) and diacylglycerol (DAG) using calcium as a cofactor. IP3 and DAG are second messenger molecules important for transmitting signals from growth factor receptors and immune system receptors across the cell membrane. Mutations in this gene have been found in autoinflammation, antibody deficiency, and immune dysregulation syndrome and familial cold autoinflammatory syndrome 3. [provided by RefSeq, Mar 2014],

### matters needing attention

Avoid repeated freezing and thawing!

### Usage suggestions

This product can be used in immunological reaction related experiments. For more information, please consult technical personnel.



Various whole cell lysates were separated by 4-20% SDS-PAGE, and the membrane was blotted with anti-PLC  $\gamma$  2 (Phospho Tyr1217) antibody. The HRP-conjugated Goat anti-Rabbit IgG (H + L) antibody was used to detect the antibody. Lane 1: Ramos Lane 2: Ramos treated with anti-IgM(12  $\mu$ g/ml) for 2 minutes Predicted band size: 148kDa Observed band size: 150kDa

