



# Raptor (Phospho Ser792) Rabbit mAb

<b>Catalog No</b>	YP-rAb-18326
<b>Isotype</b>	IgG
<b>Reactivity</b>	Human,Mouse,Rat
<b>Applications</b>	WB,IF,IP,ELISA
<b>Gene Name</b>	RPTOR KIAA1303 RAPTOR
<b>Protein Name</b>	Raptor (Ser792)
<b>Purification Process</b>	Protein A
<b>Specificity</b>	Raptor (Phospho Ser792) antibody detects endogenous levels of Human Mouse Rat Raptor (phospho-Ser792).The name of modified sites may be influenced by many factors, such as species (the modified site was not originally found in human samples) and the change of protein sequence (the previous protein sequence is incomplete, and the protein sequence may be prolonged with the development of protein sequencing technology). When naming, we will use the "numbers" in historical reference to keep the sites consistent with the reports. The antibody binds to the following modification sequence (lowercase letters are modification sites):ASsYS
<b>Formulation</b>	PBS, 50% glycerol, 0.05% Proclin 300, 0.05%BSA
<b>Source</b>	Monoclonal, Rabbit,IgG
<b>Dilution</b>	WB 1:2000-1:10000; IF 1:200-1:1000; ELISA 1:5000-1:20000; IP 1:50-1:200;
<b>Concentration</b>	0.5 mg/ml
<b>Purity</b>	≥90%
<b>Storage Stability</b>	-15° C to -25° C/1 year(Do not lower than -25° C)
<b>Synonyms</b>	Regulatory-associated protein of mTOR ; Raptor ; p150 target of rapamycin ; TOR ; -scaffold protein ;
<b>Observed Band</b>	150kD
<b>Calculated Molecular Weight</b>	149kD
<b>Cell Pathway</b>	Cytoplasm. Lysosome. Cytoplasmic granule . Targeting to lysosomes depends on amino acid availability. In arsenite-stressed cells, accumulates in stress granules when associated with SPAG5 and association with lysosomes is drastically decreased.
<b>Tissue Specificity</b>	Highly expressed in skeletal muscle, and in a lesser extent in brain, lung, small intestine, kidney and placenta. Isoform 3 is widely expressed, with highest levels in nasal mucosa and pituitary and lowest in spleen.
<b>Function</b>	Participates in the FRAP1 pathway and associates in a near stoichiometric ratio with FRAP1 to form a nutrient-sensitive complex (NSC). Plays a pivotal role as a

杭州臻优品生物科技有限公司

热销产品:

蛋白、一抗、抗体对、ELISA试剂盒、生化试剂盒  
CCK8试剂盒、QPCR检测试剂盒

检测服务:

ELISA检测及定制服务 | 生化检测 | PCR、QPCR检测 | WB检测  
ICO-IP检测 | 切片 | 染色 | 免疫组化 | 免疫荧光 | 透射电镜全套  
| 宏基因组、转录组、基因组、蛋白组、代谢组测序



关注官网



关注客服



scaffold protein in the FRAP1-signaling pathway and this interaction is essential for the catalyzed phosphorylation of EIF4EBP1. Has a positive role in nutrient-stimulated signaling to the downstream effector RPS6KB1. Under nutrient-deprived conditions, serves as a negative regulator of FRAP1 kinase activity. Regulation of the interaction with FRAP1 is a critical mechanism by which cells coordinate the rate of cell growth and maintenance of cell size with different environmental conditions. miscellaneous:Rapamycin destabilizes the interaction with FRAP1 regardless of nutrient availability, and its potency for dissociation is increased under nutrient-rich conditions. This action uncouples FRAP1 from its substrates, and inhibits FRAP1 signaling without altering its intrinsic catalytic activity. similarity:Belongs to the WD repeat RAPTOR family. similarity:Contains 7 WD repeats. subunit:Binds directly 4EBP1 and RPS6KB1 independently of its association with FRAP1. Binds preferentially to poorly or non-phosphorylated form of EIF4EBP1, and this binding is critical to the ability of FRAP1 to catalyze phosphorylation. Complex with FRAP1 physically interacts under both leucine-rich and -poor conditions and therefore in at least two nutrient-determined states with different stability. tissue specificity:Highly expressed in skeletal muscle, and in a lesser extent in brain, lung, small intestine, kidney and placenta.

## Background

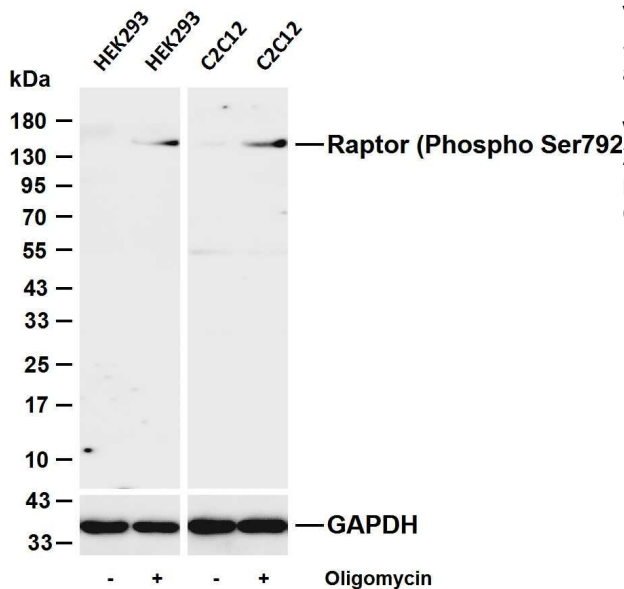
This gene encodes a component of a signaling pathway that regulates cell growth in response to nutrient and insulin levels. The encoded protein forms a stoichiometric complex with the mTOR kinase, and also associates with eukaryotic initiation factor 4E-binding protein-1 and ribosomal protein S6 kinase. The protein positively regulates the downstream effector ribosomal protein S6 kinase, and negatively regulates the mTOR kinase. Multiple transcript variants encoding different isoforms have been found for this gene. [provided by RefSeq, Sep 2009],

## matters needing attention

Avoid repeated freezing and thawing!

## Usage suggestions

This product can be used in immunological reaction related experiments. For more information, please consult technical personnel.



Various whole cell lysates were separated by 4-20% SDS-PAGE, and the membrane was blotted with anti-Raptor (Phospho Ser792) antibody. The HRP-conjugated Goat anti-Rabbit IgG (H + L) antibody was used to detect the antibody. Lane 1: HEK293 Lane 2: HEK293 was treated with Oligomycin(0.5  $\mu$  M) for 30 minutes Lane 3: C2C12 Lane 4: C2C12 was treated with Oligomycin(0.5  $\mu$  M) for 30 minutes Predicted band size: 149kDa Observed band size: 150kDa

