



# Placental Alkaline Phosphatase(PLAP) (ABT73R) Rabbit mAb (Ready to Use)

<b>Catalog No</b>	YP-rAb-18299
<b>Isotype</b>	IgG
<b>Reactivity</b>	Human
<b>Applications</b>	IHC
<b>Gene Name</b>	ALPP;PLAP
<b>Protein Name</b>	Placental Alkaline Phosphatase(PLAP)
<b>Purification Process</b>	Protein A
<b>Specificity</b>	This antibody detects endogenous levels of Placental Alkaline Phosphatase(PLAP)
<b>Formulation</b>	The prediluted ready-to-use antibody is diluted in phosphate buffer saline containing stabilizing protein and 0.05% Proclin 300
<b>Source</b>	Monoclonal, Rabbit,IgG
<b>Dilution</b>	Ready to use for IHC Note: For IHC, we suggest antigen retrieval with TE buffer pH 9.0
<b>Concentration</b>	0.5 mg/ml
<b>Purity</b>	≥90%
<b>Storage Stability</b>	2° C to 8° C/1 year,Ship by ice bag
<b>Synonyms</b>	Alkaline phosphatase, placental type ; Alkaline phosphatase Regan isozyme ; Placental alkaline phosphatase 1 ; PLAP
<b>Observed Band</b>	
<b>Calculated Molecular Weight</b>	
<b>Cell Pathway</b>	
<b>Tissue Specificity</b>	
<b>Function</b>	Catalytic activity:A phosphate monoester + H(2)O = an alcohol + phosphate.,cofactor: Binds 1 magnesium ion.,cofactor: Binds 2 zinc ions.,miscellaneous:In most mammals there are four different isozymes: placental, placental-like, intestinal and tissue non-specific (liver/bone/kidney).,online information:Alkaline phosphatase entry,polymorphism:Placental ALP is highly polymorphic, there are at least three common alleles.,similarity:Belongs to the alkaline phosphatase family.,subunit:Homodimer.,





### Background

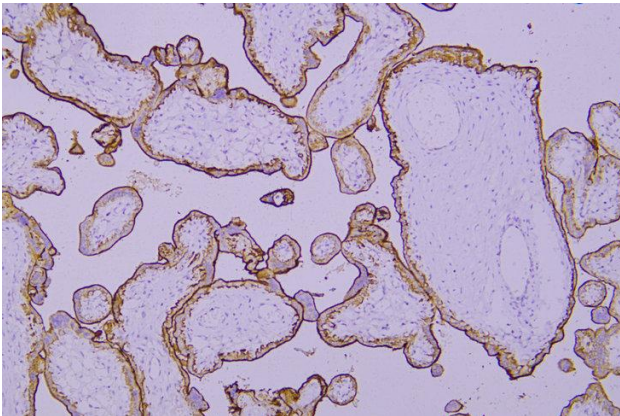
The protein encoded by this gene is an alkaline phosphatase, a metalloenzyme that catalyzes the hydrolysis of phosphoric acid monoesters. It belongs to a multigene family composed of four alkaline phosphatase isoenzymes. The enzyme functions as a homodimer and has a catalytic site containing one magnesium and two zinc ions, which are required for its enzymatic function. The protein is primarily expressed in placental and endometrial tissue; however, strong ectopic expression has been detected in ovarian adenocarcinoma, serous cystadenocarcinoma, and other ovarian cancer cells. [provided by RefSeq, Jan 2015],

### matters needing attention

Avoid repeated freezing and thawing!

### Usage suggestions

This product can be used in immunological reaction related experiments. For more information, please consult technical personnel.



Immunohistochemical analysis of paraffin-embedded human Placenta. 1, Antibody was incubated at 4° overnight. 2, Citrate buffer of pH6.0 was used for antigen retrieval. 3, Secondary antibody was diluted at 1:200(room temperature, 30min).

