



# p120 catenin (ABT9R) Rabbit mAb (Ready to Use)

<b>Catalog No</b>	YP-rAb-18298
<b>Isotype</b>	IgG
<b>Reactivity</b>	Human,Mouse,Rat
<b>Applications</b>	IHC
<b>Gene Name</b>	CTNND1
<b>Protein Name</b>	p120 catenin
<b>Purification Process</b>	Protein A
<b>Specificity</b>	This antibody detects endogenous levels of p120 Catenin
<b>Formulation</b>	The prediluted ready-to-use antibody is diluted in phosphate buffer saline containing stabilizing protein and 0.05% Proclin 300
<b>Source</b>	Monoclonal, Rabbit,IgG
<b>Dilution</b>	Ready to use for IHC Note: For IHC, we suggest antigen retrieval with TE buffer pH 9.0
<b>Concentration</b>	0.5 mg/ml
<b>Purity</b>	≥90%
<b>Storage Stability</b>	2° C to 8° C/1 year,Ship by ice bag
<b>Synonyms</b>	Cadherin associated Src substRate ; Cadherin-associated Src substRate ; CAS ; Catenin ; cadherin associated protein ; delta 1 ; Catenin delta 1 ; Catenin delta ; Catenin delta-1 ; CTND1_HUMAN ; CTNND 1 ; CTNND ; CTNND1 ; delta 1 Catenin ; KIAA0384 ; p120 ; P120 CAS ; p120 catenin ; P120 CTN ; p120 ; cas ; p120 ; ctn ; P120CAS ; P120CTN
<b>Observed Band</b>	
<b>Calculated Molecular Weight</b>	
<b>Cell Pathway</b>	Cytoplasmic, Membranous
<b>Tissue Specificity</b>	Expressed in vascular endothelium. Melanocytes and melanoma cells primarily express the long isoform 1A, whereas keratinocytes express shorter isoforms, especially 3A. The shortest isoform 4A, is detected in normal keratinocytes and melanocytes, and generally lost from cells derived from squamous cell carcinomas or melanomas. The C-terminal alternatively spliced exon B is present in the p120ctn transcripts in the colon, intestine and prostate, but lost in several tumor tissues derived from these organs.
<b>Function</b>	Alternative products:Experimental confirmation may be lacking for some isoforms,Disease:May contribute to cell malignancy. Complete loss of expression

杭州臻优品生物科技有限公司

热销产品:

蛋白、一抗、抗体对、ELISA试剂盒、生化试剂盒  
CCK8试剂盒、QPCR检测试剂盒

检测服务:

ELISA检测及定制服务 | 生化检测 | PCR、QPCR检测 | WB检测  
ICO-IP检测 | 切片 | 染色 | 免疫组化 | 免疫荧光 | 透射电镜全套  
| 宏基因组、转录组、基因组、蛋白组、代谢组测序



关注官网



关注客服



was observed in approximately 10% of invasive ductal breast carcinomas investigated. Domain: A possible nuclear localization signal exists in all isoforms where Asp-626--631-Arg are deleted. Function: Binds to and inhibits the transcriptional repressor ZBTB33, which may lead to activation of target genes of the Wnt signaling pathway (By similarity). May associate with and regulate the cell adhesion properties of both C- and E-cadherins. Implicated both in cell transformation by SRC and in ligand-induced receptor signaling through the EGF, PDGF, CSF-1 and ERBB2 receptors. Promotes GLIS2 C-terminal cleavage. induction: Induced in vascular endothelium by wounding. This effect is potentiated by prior laminar shear stress, which enhances wound closure. PTM: Phosphorylated. similarity: Belongs to the beta-catenin family. similarity: Contains 10 ARM repeats. subcellular location: Interaction with GLIS2 promotes nuclear translocation. subunit: Belongs to a multiprotein cell-cell adhesion complex that also contains E-cadherin, alpha-catenin, beta-catenin, and gamma-catenin. Binds to the C-terminal fragment of PSEN1 and mutually competes for E-cadherin. Interacts with ZBTB33. Interacts with GLIS2. tissue specificity: Expressed in vascular endothelium.

## Background

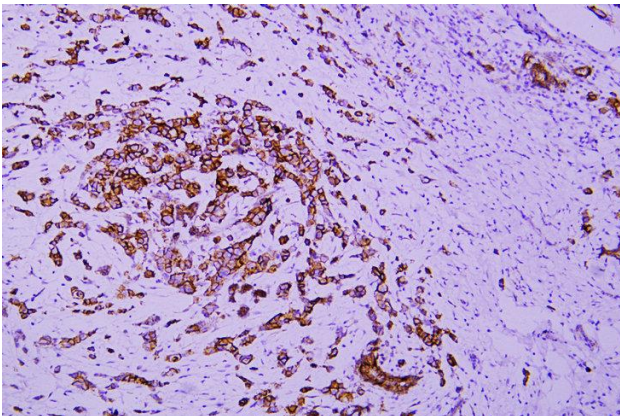
catenin delta 1 (CTNND1) Homo sapiens This gene encodes a member of the Armadillo protein family, which function in adhesion between cells and signal transduction. Multiple translation initiation codons and alternative splicing result in many different isoforms being translated. Not all of the full-length natures of the described transcript variants have been determined. Read-through transcription also exists between this gene and the neighboring upstream thioredoxin-related transmembrane protein 2 (TMX2) gene. [provided by RefSeq, Dec 2010],

## matters needing attention

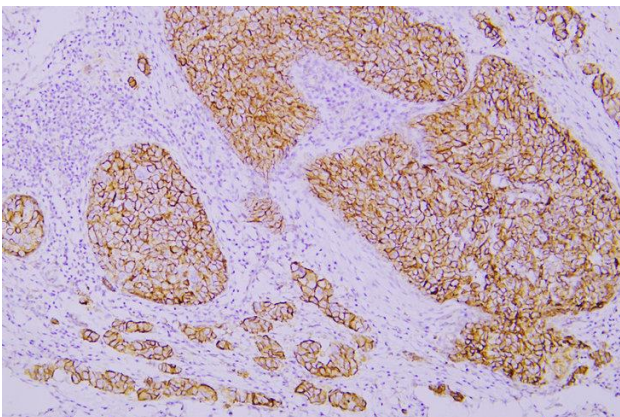
Avoid repeated freezing and thawing!

## Usage suggestions

This product can be used in immunological reaction related experiments. For more information, please consult technical personnel.



Immunohistochemical analysis of paraffin-embedded human Breast carcinoma-1. 1, Antibody was incubated at 4° overnight. 2, TRIS-EDTA of pH9.0 was used for antigen retrieval. 3, Secondary antibody was diluted at 1:200 (room temperature, 30min).



Immunohistochemical analysis of paraffin-embedded human Breast carcinoma. 1, Antibody was incubated at 4° overnight. 2, TRIS-EDTA of pH9.0 was used for antigen retrieval. 3, Secondary antibody was diluted at 1:200 (room temperature, 30min).

## 杭州臻优品生物科技有限公司

### 热销产品:

蛋白、一抗、抗体对、ELISA试剂盒、生化试剂盒  
CCK8试剂盒、QPCR检测试剂盒

### 检测服务:

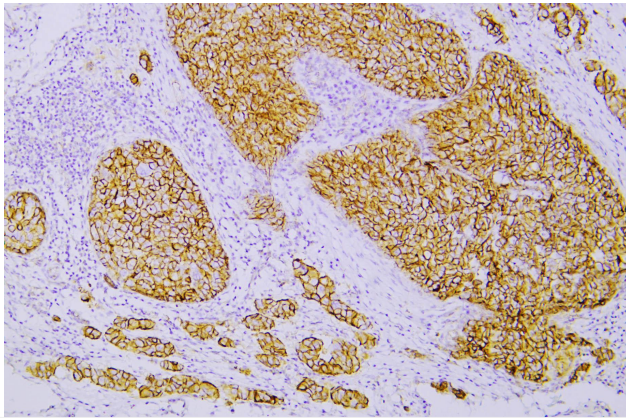
ELISA检测及定制服务 | 生化检测 | PCR、QPCR检测 | WB检测  
ICO-IP检测 | 切片 | 染色 | 免疫组化 | 免疫荧光 | 透射电镜全套  
| 宏基因组、转录组、基因组、蛋白组、代谢组测序



关注官网



关注客服



Human breast carcinoma was stained with anti-p120 catenin (ABT9R) rabbit mAb

## 杭州臻优品生物科技有限公司

### 热销产品:

蛋白、一抗、抗体对、ELISA试剂盒、生化试剂盒  
CCK8试剂盒、QPCR检测试剂盒

### 检测服务:

ELISA检测及定制服务 | 生化检测 | PCR、QPCR检测 | WB检测  
ICO-IP检测 | 切片 | 染色 | 免疫组化 | 免疫荧光 | 透射电镜全套  
| 宏基因组、转录组、基因组、蛋白组、代谢组测序



关注官网



关注客服