



Cytokeratin 8 (CK8) (ABT170R) Rabbit mAb (Ready to Use)

Catalog No	YP-rAb-18297
Isotype	IgG
Reactivity	Human
Applications	IHC
Gene Name	KRT8 CYK8
Protein Name	CARD2;CK 8;CK-8;CK8;CYK8;CYKER;Cytokeratin endo A;Cytokeratin-8;DreK8;EndoA;K2C8;K2C8 HUMAN;K8;Keratin 8;Keratin type II cytoskeletal 8;Keratin, type II cytoskeletal 8;Keratin-8;KO;Krt 2.8;KRT8;MGC118110;MGC174782;MGC53564;MGC85764;sb:cb186;Type-II keratin Kb8
Purification Process	Protein A
Specificity	This antibody detects endogenous levels of Cytokeratin 8
Formulation	The prediluted ready-to-use antibody is diluted in phosphate buffer saline containing stabilizing protein and 0.05% Proclin 300
Source	Monoclonal, Rabbit,IgG
Dilution	Ready to use for IHC Note: For IHC, we suggest antigen retrieval with TE buffer pH 9.0
Concentration	0.5 mg/ml
Purity	≥90%
Storage Stability	2° C to 8° C/1 year,Ship by ice bag
Synonyms	CARD2 ; CK 8 ; CK-8 ; CK8 ; CYK8 ; CYKER ; Cytokeratin endo A ; Cytokeratin-8 ; DreK8 ; EndoA ; K2C8 ; K2C8_HUMAN ; K8 ; Keratin 8 ; Keratin type II cytoskeletal 8 ; Keratin, type II cytoskeletal 8 ; Keratin-8 ; KO ; Krt 2.8 ; KRT8 ; MGC118110 ; MGC174782 ; MGC53564 ; MGC85764 ; sb:cb186 ; Type-II keratin Kb8
Observed Band	
Calculated Molecular Weight	
Cell Pathway	Cytoplasm . Nucleus, nucleoplasm . Nucleus matrix .
Tissue Specificity	Observed in muscle fibers accumulating in the costameres of myoplasm at the sarcolemma membrane in structures that contain dystrophin and spectrin. Expressed in gingival mucosa and hard palate of the oral cavity.





Function

Disease: Defects in KRT8 are a cause of cryptogenic cirrhosis [MIM:215600]. Function: Together with KRT19, helps to link the contractile apparatus to dystrophin at the costameres of striated muscle. miscellaneous: There are two types of cytoskeletal and microfibrillar keratin: I (acidic; 40-55 kDa) and II (neutral to basic; 56-70 kDa). PTM: O-glycosylated at multiple sites; glycans consist of single N-acetylglucosamine residues. PTM: Phosphorylation on serine residues is enhanced during EGF stimulation and mitosis. Ser-74 phosphorylation plays an important role in keratin filament reorganization. similarity: Belongs to the intermediate filament family. subunit: Heterotetramer of two type I and two type II keratins. keratin-8 associates with keratin-18. Associates with KRT20. Interacts with HCV core protein and PNN. When associated with KRT19, interacts with DMD. Interacts with TCHP. tissue specificity: Observed in muscle fibers accumulating in the costameres of myoplasm at the sarcolemma membrane in structures that contain dystrophin and spectrin. Expressed in gingival mucosa and hard palate of the oral cavity.

Background

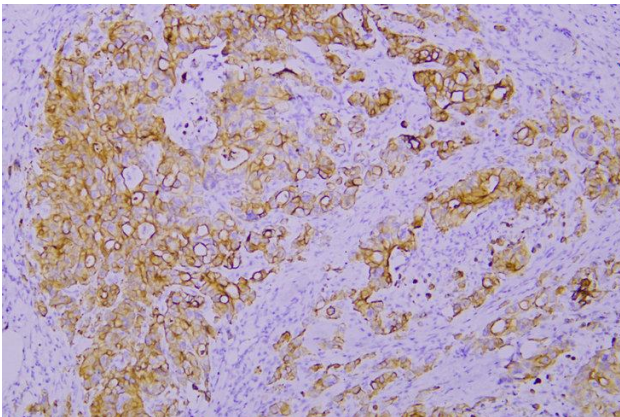
keratin 8(KRT8) Homo sapiens This gene is a member of the type II keratin family clustered on the long arm of chromosome 12. Type I and type II keratins heteropolymerize to form intermediate-sized filaments in the cytoplasm of epithelial cells. The product of this gene typically dimerizes with keratin 18 to form an intermediate filament in simple single-layered epithelial cells. This protein plays a role in maintaining cellular structural integrity and also functions in signal transduction and cellular differentiation. Mutations in this gene cause cryptogenic cirrhosis. Alternatively spliced transcript variants have been found for this gene. [provided by RefSeq, Jan 2012],

matters needing attention

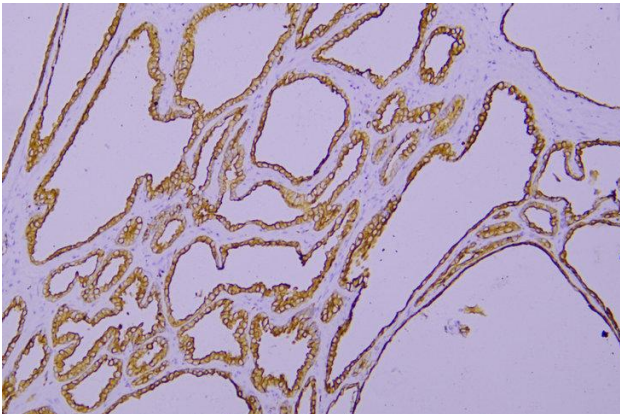
Avoid repeated freezing and thawing!

Usage suggestions

This product can be used in immunological reaction related experiments. For more information, please consult technical personnel.



Immunohistochemical analysis of paraffin-embedded human Colon carcinoma. 1, Antibody was incubated at 4 ° overnight. 2, TRIS-EDTA of pH8.0 was used for antigen retrieval. 3, Secondary antibody was diluted at 1:200 (room temperature, 30min).



Immunohistochemical analysis of paraffin-embedded human Prostate. 1, Antibody was incubated at 4 ° overnight. 2, TRIS-EDTA of pH8.0 was used for antigen retrieval. 3, Secondary antibody was diluted at 1:200 (room temperature, 30min).

杭州臻优品生物科技有限公司

热销产品:

蛋白、一抗、抗体对、ELISA试剂盒、生化试剂盒
CCK8试剂盒、QPCR检测试剂盒

检测服务:

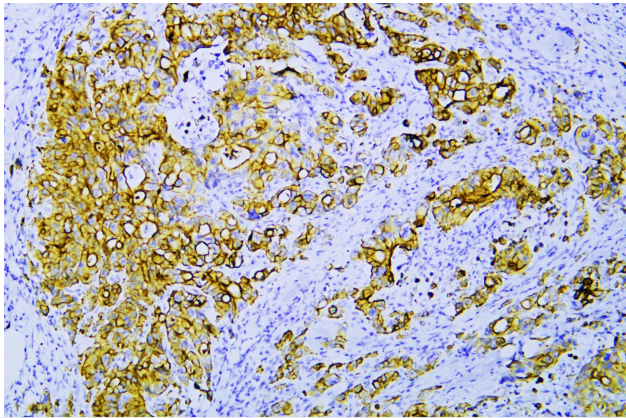
ELISA检测及定制服务 | 生化检测 | PCR、QPCR检测 | WB检测
ICO-IP检测 | 切片 | 染色 | 免疫组化 | 免疫荧光 | 透射电镜全套
| 宏基因组、转录组、基因组、蛋白组、代谢组测序



关注官网



关注客服



Human colon cancer was stained with anti-Cytokeratin 8 (CK8) (ABT170R) rabbit mAb

杭州臻优品生物科技有限公司

热销产品:

蛋白、一抗、抗体对、ELISA试剂盒、生化试剂盒
CCK8试剂盒、QPCR检测试剂盒

检测服务:

ELISA检测及定制服务 | 生化检测 | PCR、QPCR检测 | WB检测
ICO-IP检测 | 切片 | 染色 | 免疫组化 | 免疫荧光 | 透射电镜全套
| 宏基因组、转录组、基因组、蛋白组、代谢组测序



关注官网



关注客服