



Calponin-1 (ABT145R) Rabbit mAb (Ready to Use)

Catalog No	YP-rAb-18296
Isotype	IgG
Reactivity	Human
Applications	IHC
Gene Name	CNN1
Protein Name	Calponin-1
Purification Process	Protein A
Specificity	This antibody detects endogenous levels of Calponin-1
Formulation	The prediluted ready-to-use antibody is diluted in phosphate buffer saline containing stabilizing protein and 0.05% Proclin 300
Source	Monoclonal, Rabbit,IgG
Dilution	Ready to use for IHC Note: For IHC, we suggest antigen retrieval with TE buffer pH 9.0
Concentration	0.5 mg/ml
Purity	≥90%
Storage Stability	2° C to 8° C/1 year,Ship by ice bag
Synonyms	Basic calponin ; Calponin 1 ; Calponin 1 basic smooth muscle ; Calponin H1 ; Calponin H1 smooth muscle ; Calponin-1 ; Calponin1 ; Calponins basic ; CNN 1 ; Cnn1 ; CNN1_HUMAN ; Epididymis secretory protein Li 14 ; HEL S 14 ; Sm Calp ; SMCC ; smooth muscle
Observed Band	
Calculated Molecular Weight	
Cell Pathway	Cytoplasmic
Tissue Specificity	Smooth muscle, and tissues containing significant amounts of smooth muscle.
Function	Thin filament-associated protein that is implicated in the regulation and modulation of smooth muscle contraction. It is capable of binding to actin, calmodulin, troponin C and tropomyosin. The interaction of calponin with actin inhibits the actomyosin Mg-ATPase activity.,similarity:Belongs to the calponin family.,similarity:Contains 1 CH (calponin-homology) domain.,similarity:Contains 3 calponin-like repeats.,subunit:Part of cGMP kinase signaling complex at least composed of ACTA2/alpha-actin, CNN1/calponin H1, PLN/phospholamban, PRKG1 and ITPR1.,tissue specificity:Smooth muscle, and tissues containing significant amounts of smooth muscle.,

杭州臻优品生物科技有限公司

热销产品:

蛋白、一抗、抗体对、ELISA试剂盒、生化试剂盒
CCK8试剂盒、QPCR检测试剂盒

检测服务:

ELISA检测及定制服务 | 生化检测 | PCR、QPCR检测 | WB检测
ICO-IP检测 | 切片 | 染色 | 免疫组化 | 免疫荧光 | 透射电镜全套
| 宏基因组、转录组、基因组、蛋白组、代谢组测序



关注官网



关注客服



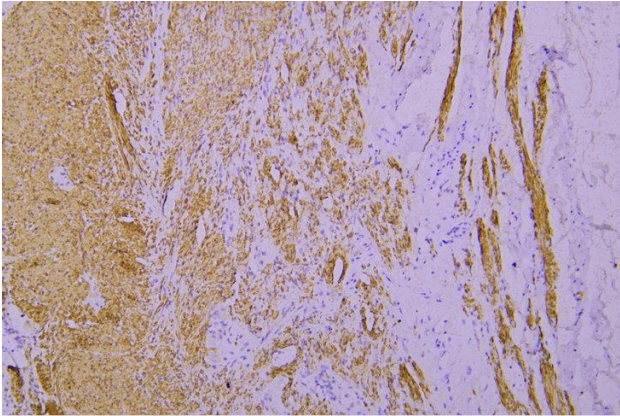
Background

matters needing attention

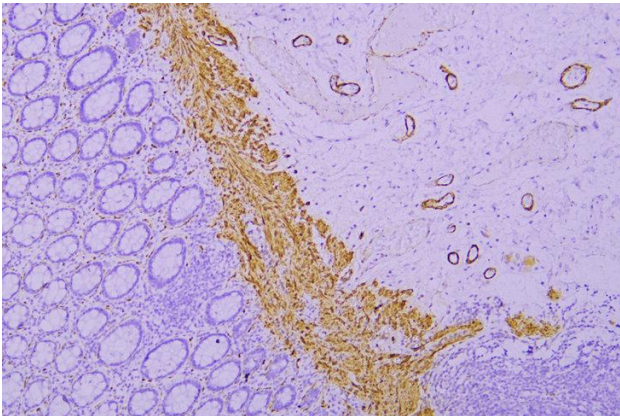
Avoid repeated freezing and thawing!

Usage suggestions

This product can be used in immunological reaction related experiments. For more information, please consult technical personnel.



Immunohistochemical analysis of paraffin-embedded human Appendix. 1, Antibody was incubated at 4° overnight. 2, Citrate buffer of pH6.0 was used for antigen retrieval. 3, Secondary antibody was diluted at 1:200(room temperature, 30min).



Immunohistochemical analysis of paraffin-embedded human Colon. 1, Antibody was incubated at 4° overnight. 2, Citrate buffer of pH6.0 was used for antigen retrieval. 3, Secondary antibody was diluted at 1:200(room temperature, 30min).

