



Cytokeratin (pan) (ABT237R) Rabbit mAb (Ready to Use)

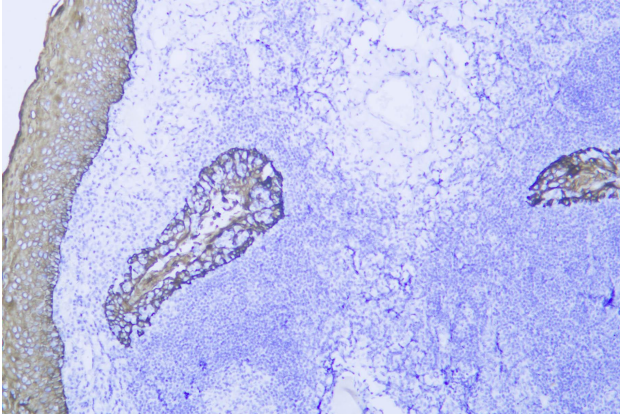
Catalog No	YP-rAb-18294
Isotype	IgG
Reactivity	Human,Mouse,Rat
Applications	IHC
Gene Name	KRT10;KRT13;KRT14;KRT15;KRT16;KRT19
Protein Name	Cytokeratin Pan
Purification Process	Protein A
Specificity	This antibody detects endogenous levels of Cytokeratin Pan
Formulation	The prediluted ready-to-use antibody is diluted in phosphate buffer saline containing stabilizing protein and 0.05% Proclin 300
Source	Monoclonal, Rabbit,IgG
Dilution	Ready to use for IHC Note: For IHC, we suggest antigen retrieval with TE buffer pH 9.0
Concentration	0.5 mg/ml
Purity	≥90%
Storage Stability	2° C to 8° C/1 year,Ship by ice bag
Synonyms	pan cytokeRatin ; wide spectrum CytokeRatin ; AE1 ; AE3
Observed Band	
Calculated Molecular Weight	
Cell Pathway	Cytoplasmic, Membranous
Tissue Specificity	Non-neural epithelial tissues.
Function	
Background	
matters needing attention	Avoid repeated freezing and thawing!



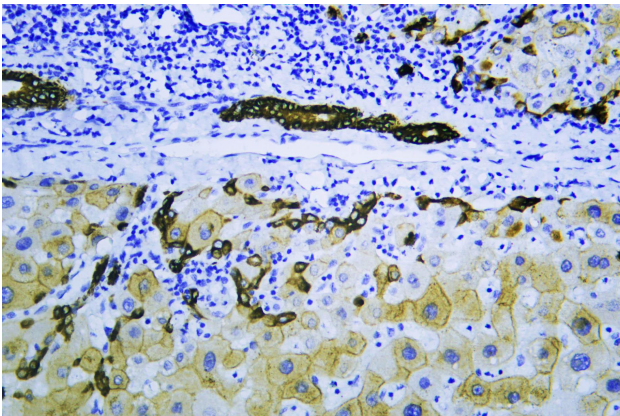


Usage suggestions

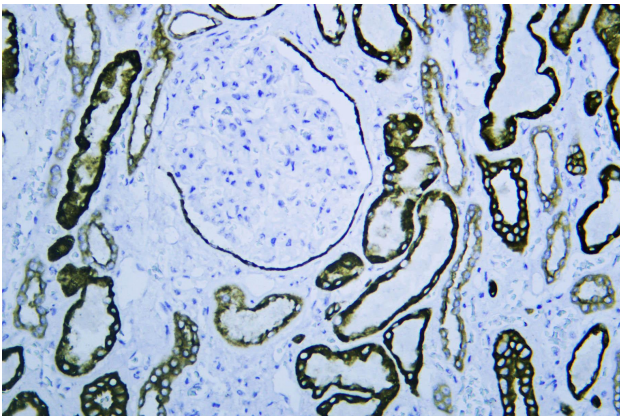
This product can be used in immunological reaction related experiments. For more information, please consult technical personnel.



Human tonsil was stained with anti-Cytokeratin Pan (ABT237R) rabbit mAb



Human liver was stained with anti-Cytokeratin Pan (ABT237R) rabbit mAb



Human kidney was stained with anti-Cytokeratin Pan (ABT237R) rabbit mAb

杭州臻优品生物科技有限公司

热销产品:

蛋白、一抗、抗体对、ELISA试剂盒、生化试剂盒
CCK8试剂盒、QPCR检测试剂盒

检测服务:

ELISA检测及定制服务 | 生化检测 | PCR、QPCR检测 | WB检测
ICO-IP检测 | 切片 | 染色 | 免疫组化 | 免疫荧光 | 透射电镜全套
| 宏基因组、转录组、基因组、蛋白组、代谢组测序



关注官网



关注客服