



MDR1 Rabbit mAb (Ready to Use)

Catalog No	YP-rAb-18286
Isotype	IgG
Reactivity	Human,Mouse
Applications	IHC
Gene Name	ABCB1
Protein Name	ABC20;ABCB1;ATP binding cassette, sub family B (MDR/TAP), member 1;ATP-binding cassette sub-family B member 1;CD243;CLCS;Colchicin sensitivity;Doxorubicin resistance;GP170;MDR1;MDR1_HUMAN;Multidrug resistance 1;Multidrug resistance protein 1;P glycoprotein 1;P gp;P-glycoprotein 1;PGY1
Purification Process	Protein A
Specificity	This antibody detects endogenous levels of MDR1
Formulation	The prediluted ready-to-use antibody is diluted in phosphate buffer saline containing stabilizing protein and 0.05% Proclin 300
Source	Monoclonal, Rabbit,IgG
Dilution	Ready to use for IHC Note: For IHC, we suggest antigen retrieval with TE buffer pH 9.0
Concentration	0.5 mg/ml
Purity	≥90%
Storage Stability	2° C to 8° C/1 year,Ship by ice bag
Synonyms	ABC20 ; ABCB1 ; ATP binding cassette, sub family B ; MDR/TAP ; member 1 ; ATP-binding cassette sub-family B member 1 ; CD243 ; CLCS ; Colchicin sensitivity ; Doxorubicin resistance ; GP170 ; MDR1 ; MDR1_HUMAN ; Multidrug resistance 1 ; Multidrug resistance protein 1 ; P glycoprotein 1 ; P gp ; P-glycoprotein 1 ; PGY1 ; P Glycoprotein
Observed Band	
Calculated Molecular Weight	
Cell Pathway	Membranous
Tissue Specificity	Kindey
Function	Catalytic activity:ATP + H(2)O + xenobiotic(In) = ADP + phosphate + xenobiotic(Out).,Disease:Genetic variations in ABCB1 are associated with susceptibility to inflammatory bowel disease type 13 (IBD13) [MIM:612244]. Inflammatory bowel disease is characterized by a chronic relapsing intestinal





inflammation. It is subdivided into Crohn disease and ulcerative colitis phenotypes. Crohn disease may involve any part of the gastrointestinal tract, but most frequently the terminal ileum and colon. Bowel inflammation is transmural and discontinuous; it may contain granulomas or be associated with intestinal or perianal fistulas. In contrast, in ulcerative colitis, the inflammation is continuous and limited to rectal and colonic mucosal layers; fistulas and granulomas are not observed. Both diseases include extraintestinal inflammation of the skin, eyes, or joints. Crohn disease and ulcerative colitis are commonly classified as autoimmune diseases. Function: Energy-dependent efflux pump responsible for decreased drug accumulation in multidrug-resistant cells. online information: P-glycoprotein entry, online information: The Singapore human mutation and polymorphism database, polymorphism: Genetic variation in ABCB1 may play a role in patients who do not respond to drug treatment. similarity: Belongs to the ABC transporter family. similarity: Belongs to the ABC transporter family. Multidrug resistance exporter (TC 3.A.1.201) subfamily. similarity: Contains 2 ABC transmembrane type-1 domains. similarity: Contains 2 ABC transporter domains. tissue specificity: Expressed in liver, kidney, small intestine and brain.

Background

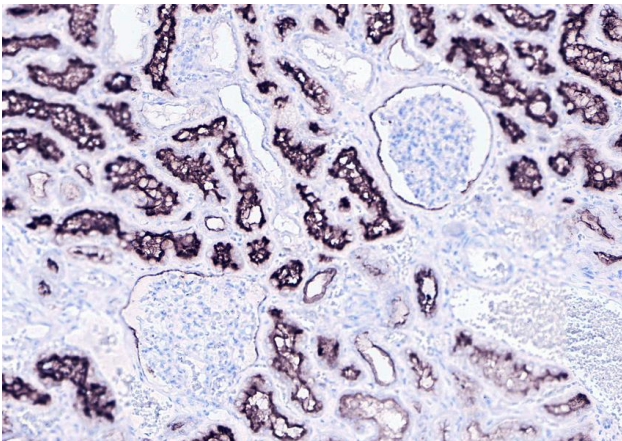
The membrane-associated protein encoded by this gene is a member of the superfamily of ATP-binding cassette (ABC) transporters. ABC proteins transport various molecules across extra- and intra-cellular membranes. ABC genes are divided into seven distinct subfamilies (ABC1, MDR/TAP, MRP, ALD, OABP, GCN20, White). This protein is a member of the MDR/TAP subfamily. Members of the MDR/TAP subfamily are involved in multidrug resistance. The protein encoded by this gene is an ATP-dependent drug efflux pump for xenobiotic compounds with broad substrate specificity. It is responsible for decreased drug accumulation in multidrug-resistant cells and often mediates the development of resistance to anticancer drugs. This protein also functions as a transporter in the blood-brain barrier. [provided by RefSeq, Jul 2008],

matters needing attention

Avoid repeated freezing and thawing!

Usage suggestions

This product can be used in immunological reaction related experiments. For more information, please consult technical personnel.



Human kidney tissue was stained with Anti-MDR1 rabbit Antibody

