



# MAGE-C1 Rabbit mAb (Ready to Use)

<b>Catalog No</b>	YP-rAb-18283
<b>Isotype</b>	IgG
<b>Reactivity</b>	Human
<b>Applications</b>	IHC
<b>Gene Name</b>	MAGEC1
<b>Protein Name</b>	MAGE-C1
<b>Purification Process</b>	Protein A
<b>Specificity</b>	This antibody detects endogenous levels of MAGE-C1
<b>Formulation</b>	The prediluted ready-to-use antibody is diluted in phosphate buffer saline containing stabilizing protein and 0.05% Proclin 300
<b>Source</b>	Monoclonal, Rabbit,IgG
<b>Dilution</b>	Ready to use for IHC Note: For IHC, we suggest antigen retrieval with TE buffer pH 9.0
<b>Concentration</b>	0.5 mg/ml
<b>Purity</b>	≥90%
<b>Storage Stability</b>	2° C to 8° C/1 year,Ship by ice bag
<b>Synonyms</b>	Cancer/testis antigen 7.1 ; Cancer/testis antigen family 7 member 1 ; CT7 ; CT7.1 ; MAGC1_HUMAN ; MAGE C1 ; MAGE C1 antigen ; MAGE-C1 antigen ; MAGEC1 ; melanoma antigen family C, 1 ; Melanoma associated antigen C1 ; Melanoma-associated antigen C1 ; MGC39366
<b>Observed Band</b>	
<b>Calculated Molecular Weight</b>	
<b>Cell Pathway</b>	Cytoplasmic
<b>Tissue Specificity</b>	Expressed in testis and in tumors of a wide variety of histologic types.
<b>Function</b>	similarity:Contains 1 MAGE domain.,tissue specificity:Expressed in testis and in tumors of a wide variety of histologic types.,
<b>Background</b>	This gene is a member of the melanoma antigen gene (MAGE) family. The proteins of this family are tumor-specific antigens that can be recognized by autologous cytolytic T lymphocytes. This protein contains a large number of unique short repetitive sequences in front of the MAGE-homologous sequence, and therefore is about 800 aa longer than the other MAGE proteins. [provided by RefSeq, Jul 2008],



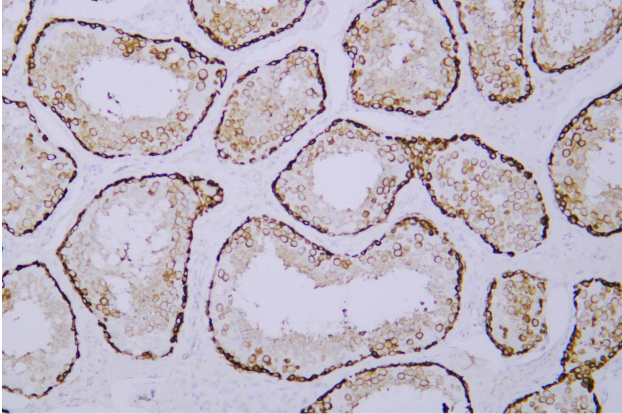


**matters needing attention**

Avoid repeated freezing and thawing!

**Usage suggestions**

This product can be used in immunological reaction related experiments. For more information, please consult technical personnel.



Human testis was stained with anti-MAGE-C1 rabbit mAb

**杭州臻优品生物科技有限公司**

**热销产品:**

蛋白、一抗、抗体对、ELISA试剂盒、生化试剂盒  
CCK8试剂盒、QPCR检测试剂盒

**检测服务:**

ELISA检测及定制服务 | 生化检测 | PCR、QPCR检测 | WB检测  
ICO-IP检测 | 切片 | 染色 | 免疫组化 | 免疫荧光 | 透射电镜全套  
| 宏基因组、转录组、基因组、蛋白组、代谢组测序



关注官网



关注客服