



# TIMP1 (ABT200R) Rabbit mAb (Ready to Use)

<b>Catalog No</b>	YP-rAb-18274
<b>Isotype</b>	IgG
<b>Reactivity</b>	Human
<b>Applications</b>	IHC
<b>Gene Name</b>	TIMP1
<b>Protein Name</b>	Tissue Inhibitor of Metalloproteinases 1(TIMP1)
<b>Purification Process</b>	Protein A
<b>Specificity</b>	This antibody detects endogenous levels of TIMP1
<b>Formulation</b>	The prediluted ready-to-use antibody is diluted in phosphate buffer saline containing stabilizing protein and 0.05% Proclin 300
<b>Source</b>	Monoclonal, Rabbit,IgG
<b>Dilution</b>	Ready to use for IHC Note: For IHC, we suggest antigen retrieval with TE buffer pH 9.0
<b>Concentration</b>	0.5 mg/ml
<b>Purity</b>	≥90%
<b>Storage Stability</b>	2° C to 8° C/1 year,Ship by ice bag
<b>Synonyms</b>	Metalloproteinase inhibitor 1 ; Erythroid-potentiating activity ; EPA ; Fibroblast collagenase inhibitor ; Collagenase inhibitor ; Tissue inhibitor of metalloproteinases 1 ; TIMP-1 ; TIMP1 ; CLGI ; TIMP
<b>Observed Band</b>	
<b>Calculated Molecular Weight</b>	
<b>Cell Pathway</b>	Secreted .
<b>Tissue Specificity</b>	Detected in rheumatoid synovial fluid (at protein level).
<b>Function</b>	Complexes with metalloproteinases (such as collagenases) and irreversibly inactivates them. Also mediates erythropoiesis in vitro; but, unlike IL-3, it is species-specific, stimulating the growth and differentiation of only human and murine erythroid progenitors. Known to act on MMP-1, MMP-2, MMP-3, MMP-7, MMP-8, MMP-9, MMP-10, MMP-11, MMP-12, MMP-13 and MMP-16. Does not act on MMP-14.,PTM:The activity of TIMP1 is dependent on the presence of disulfide bonds.,similarity:Belongs to the protease inhibitor I35 (TIMP) family.,similarity:Contains 1 NTR domain.,





## Background

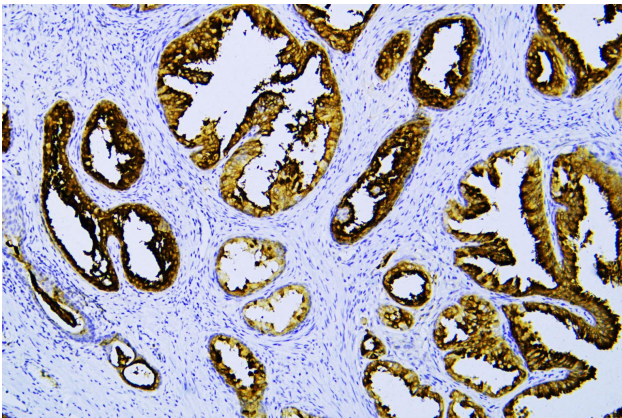
This gene belongs to the TIMP gene family. The proteins encoded by this gene family are natural inhibitors of the matrix metalloproteinases (MMPs), a group of peptidases involved in degradation of the extracellular matrix. In addition to its inhibitory role against most of the known MMPs, the encoded protein is able to promote cell proliferation in a wide range of cell types, and may also have an anti-apoptotic function. Transcription of this gene is highly inducible in response to many cytokines and hormones. In addition, the expression from some but not all inactive X chromosomes suggests that this gene inactivation is polymorphic in human females. This gene is located within intron 6 of the synapsin I gene and is transcribed in the opposite direction. [provided by RefSeq, Jul 2008],

## matters needing attention

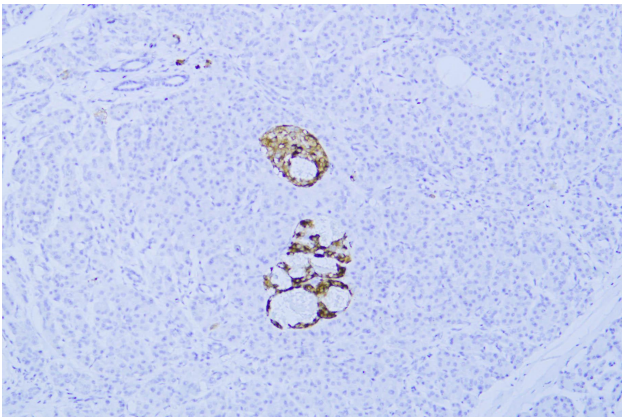
Avoid repeated freezing and thawing!

## Usage suggestions

This product can be used in immunological reaction related experiments. For more information, please consult technical personnel.



Human prostate was stained with anti-Tissue Inhibitor of Metalloproteinases 1(TIMP1) (ABT200R) rabbit mAb



Human pancreas was stained with anti-Tissue Inhibitor of Metalloproteinases 1(TIMP1) (ABT200R) rabbit mAb

