



# Thyroglobulin Rabbit mAb (Ready to Use)

<b>Catalog No</b>	YP-rAb-18272
<b>Isotype</b>	IgG
<b>Reactivity</b>	Human
<b>Applications</b>	IHC
<b>Gene Name</b>	TG
<b>Protein Name</b>	Thyroglobulin
<b>Purification Process</b>	Protein A
<b>Specificity</b>	This antibody detects endogenous levels of Thyroglobulin
<b>Formulation</b>	The prediluted ready-to-use antibody is diluted in phosphate buffer saline containing stabilizing protein and 0.05% Proclin 300
<b>Source</b>	Monoclonal, Rabbit,IgG
<b>Dilution</b>	Ready to use for IHC Note: For IHC, we suggest antigen retrieval with TE buffer pH 9.0
<b>Concentration</b>	0.5 mg/ml
<b>Purity</b>	≥90%
<b>Storage Stability</b>	2° C to 8° C/1 year,Ship by ice bag
<b>Synonyms</b>	AITD 3 ; AITD3 ; hTG ; TDH3 ; Tg ; TGN ; THYG_HUMAN ; Thyroglobulin
<b>Observed Band</b>	
<b>Calculated Molecular Weight</b>	
<b>Cell Pathway</b>	Cytoplasmic
<b>Tissue Specificity</b>	Specifically expressed in the thyroid gland.
<b>Function</b>	Disease:Defects in TG are a cause of some forms of goiter [MIM:188450]. Goiter is an enlargement of the thyroid gland. This is sometimes linked to hypothyroidism.,Disease:Variations in TG are associated with susceptibility to autoimmune thyroid disease type 3 (AITD3) [MIM:608175]. AITDs including Graves disease (GD) and Hashimoto thyroiditis (HT), are among the most common human autoimmune diseases. They are complex diseases, which are caused by an interaction between susceptibility genes and nongenetic factors, such as infection.,Function:Precursor of the iodinated thyroid hormones thyroxine (T4) and triiodothyronine (T3).,online information:Thyroglobulin entry,PTM:Sulfated.,similarity:Belongs to the type-B carboxylesterase/lipase family.,similarity:Contains 11 thyroglobulin type-1 domains.,subunit:Homodimer.,tissue specificity:Thyroid gland specific.,





## Background

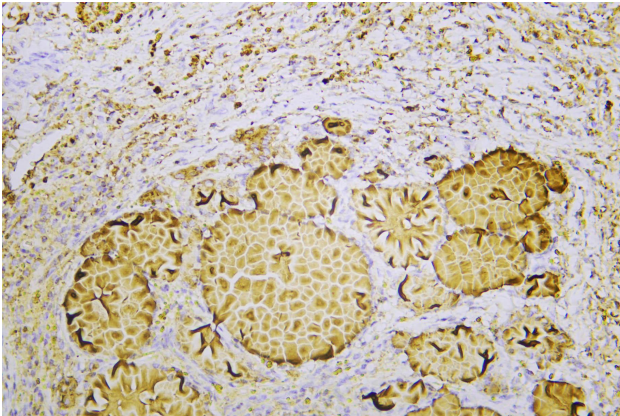
Thyroglobulin (Tg) is a glycoprotein homodimer produced predominantly by the thyroid gland. It acts as a substrate for the synthesis of thyroxine and triiodothyronine as well as the storage of the inactive forms of thyroid hormone and iodine. Thyroglobulin is secreted from the endoplasmic reticulum to its site of iodination, and subsequent thyroxine biosynthesis, in the follicular lumen. Mutations in this gene cause thyroid dysmorphogenesis, manifested as goiter, and are associated with moderate to severe congenital hypothyroidism. Polymorphisms in this gene are associated with susceptibility to autoimmune thyroid diseases (AITD) such as Graves disease and Hashimoto thyroiditis. [provided by RefSeq, Nov 2009],

## matters needing attention

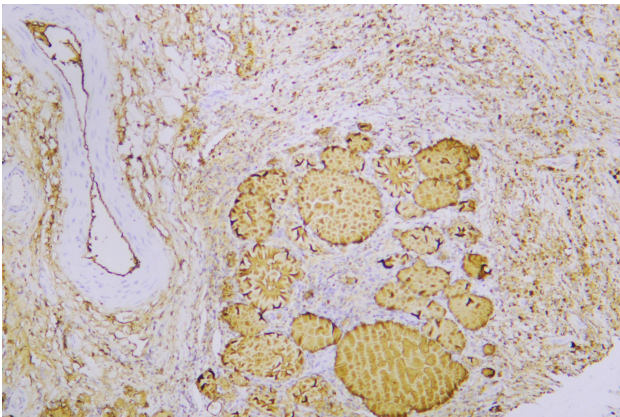
Avoid repeated freezing and thawing!

## Usage suggestions

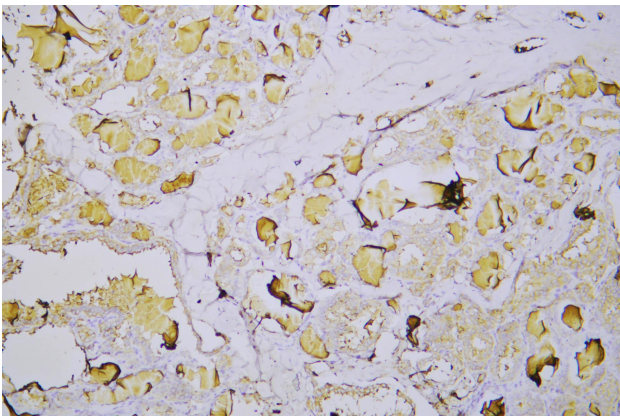
This product can be used in immunological reaction related experiments. For more information, please consult technical personnel.



Human thyroid was stained with anti-Thyroglobulin rabbit mAb



Human thyroid was stained with anti-Thyroglobulin rabbit mAb



Human thyroid was stained with anti-Thyroglobulin rabbit mAb

## 杭州臻优品生物科技有限公司

### 热销产品:

蛋白、一抗、抗体对、ELISA试剂盒、生化试剂盒  
CCK8试剂盒、QPCR检测试剂盒

### 检测服务:

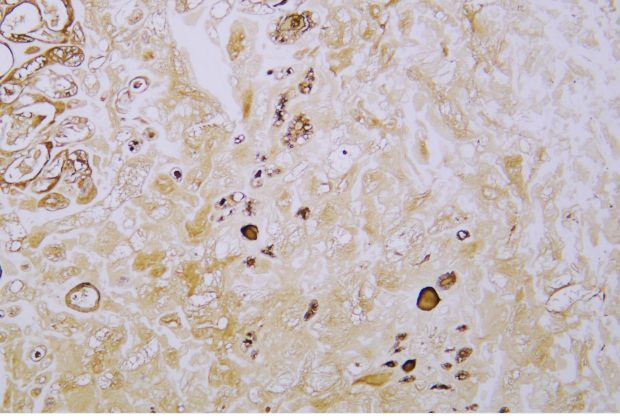
ELISA检测及定制服务 | 生化检测 | PCR、QPCR检测 | WB检测  
ICO-IP检测 | 切片 | 染色 | 免疫组化 | 免疫荧光 | 透射电镜全套  
| 宏基因组、转录组、基因组、蛋白组、代谢组测序



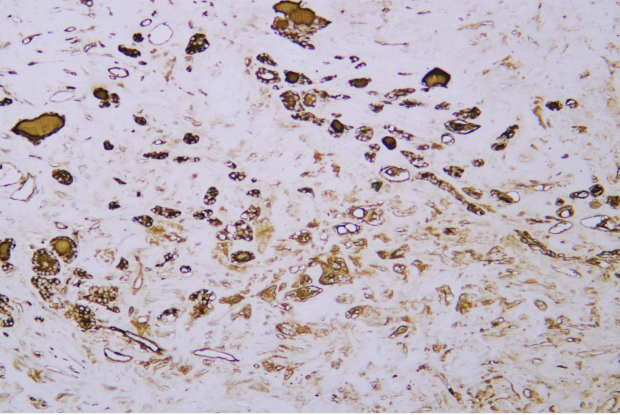
关注官网



关注客服



Human follicular thyroid cancer was stained with anti-Thyroglobulin rabbit mAb



Human follicular thyroid cancer was stained with anti-Thyroglobulin rabbit mAb

## 杭州臻优品生物科技有限公司

### 热销产品:

蛋白、一抗、抗体对、ELISA试剂盒、生化试剂盒  
CCK8试剂盒、QPCR检测试剂盒

### 检测服务:

ELISA检测及定制服务 | 生化检测 | PCR、QPCR检测 | WB检测  
ICO-IP检测 | 切片 | 染色 | 免疫组化 | 免疫荧光 | 透射电镜全套  
| 宏基因组、转录组、基因组、蛋白组、代谢组测序



关注官网



关注客服