



TCL1 Rabbit mAb (Ready to Use)

Catalog No	YP-rAb-18271
Isotype	IgG
Reactivity	Human
Applications	IHC
Gene Name	TCL1A
Protein Name	TCL1
Purification Process	Protein A
Specificity	This antibody detects endogenous levels of TCL1
Formulation	The prediluted ready-to-use antibody is diluted in phosphate buffer saline containing stabilizing protein and 0.05% Proclin 300
Source	Monoclonal, Rabbit,IgG
Dilution	Ready to use for IHC Note: For IHC, we suggest antigen retrieval with TE buffer pH 9.0
Concentration	0.5 mg/ml
Purity	≥90%
Storage Stability	2° C to 8° C/1 year,Ship by ice bag
Synonyms	Anti TCL1A ; Lymphoma/leukemia, T-cell ; Oncogene TCL-1 ; Oncogene TCL1 ; P14 TCL1 ; P14 TCL1 protein ; Protein p14 TCL1 ; T cell leukemia 1 ; T cell lymphoma 1 ; T cell lymphoma 1A ; T-cell leukemia/lymphoma 1A ; T-cell leukemia/lymphoma protein 1A ; TCL 1 protein ; TCL1 ; TCL1 oncogene ; TCL1 PEN ; Tcl1a ; TCL1A ; TCL1A_HUMAN
Observed Band	
Calculated Molecular Weight	
Cell Pathway	Cytoplasmic, Nuclear
Tissue Specificity	Restricted in the T-cell lineage to immature thymocytes and activated peripheral lymphocytes. Preferentially expressed early in T- and B-lymphocyte differentiation.
Function	Disease:Chromosomal aberrations activating TCL1A are found in chronic T-cell leukemias (T-CLL). Translocation t(14;14)(q11;q32); translocation t(7;14)(q35;q32); inversion inv(14)(q11;q32) that involves the T-cell receptor alpha/delta locuses.,Function:Enhances the phosphorylation and activation of AKT1, AKT2 and AKT3. Promotes nuclear translocation of AKT1. Enhances cell proliferation, stabilizes mitochondrial membrane potential and promotes cell





survival.,similarity:Belongs to the TCL1 family.,subcellular location:Microsomal fraction.,subunit:Homodimer. Interacts with AKT1, AKT2 and AKT3 (via PH domain). Interacts with PNPT1; the interaction has no effect on PNPT1 exonuclease activity.,tissue specificity:Restricted in the T-cell lineage to immature thymocytes and activated peripheral lymphocytes. Preferentially expressed early in T- and B-lymphocyte differentiation.,

Background

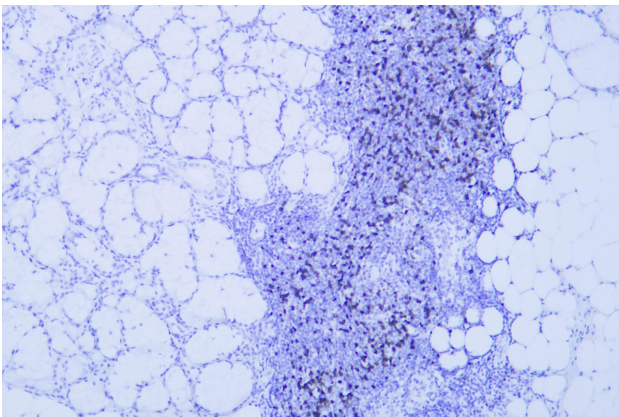
Overexpression of the TCL1 gene in humans has been implicated in the development of mature T cell leukemia, in which chromosomal rearrangements bring the TCL1 gene in close proximity to the T-cell antigen receptor (TCR)-alpha (MIM 186880) or TCR-beta (MIM 186930) regulatory elements (summarized by Virgilio et al., 1998 [PubMed 9520462]). In normal T cells TCL1 is expressed in CD4-/CD8- cells, but not in cells at later stages of differentiation. TCL1 functions as a coactivator of the cell survival kinase AKT (MIM 164730) (Laine et al., 2000 [PubMed 10983986]).[supplied by OMIM, Jul 2010],

matters needing attention

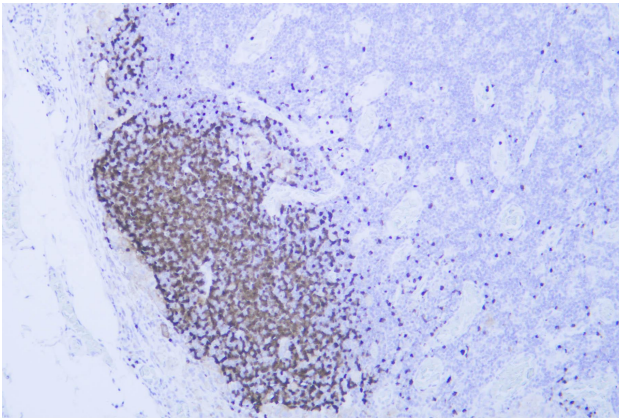
Avoid repeated freezing and thawing!

Usage suggestions

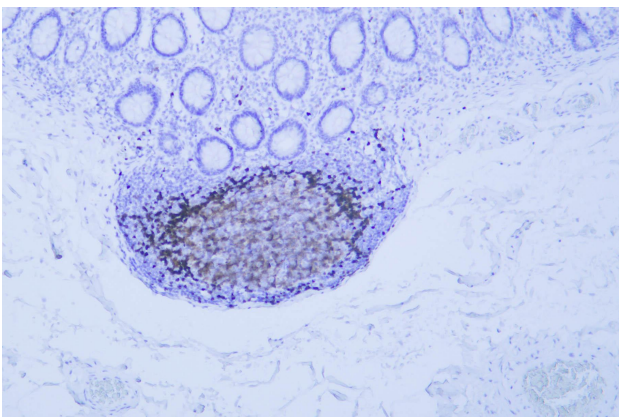
This product can be used in immunological reaction related experiments. For more information, please consult technical personnel.



Human salivary glands was stained with anti-TCL1 rabbit mAb



Human malignant melanoma was stained with anti-TCL1 rabbit mAb



Human colon was stained with anti-TCL1 rabbit mAb

杭州臻优品生物科技有限公司

热销产品:

蛋白、一抗、抗体对、ELISA试剂盒、生化试剂盒
CCK8试剂盒、QPCR检测试剂盒

检测服务:

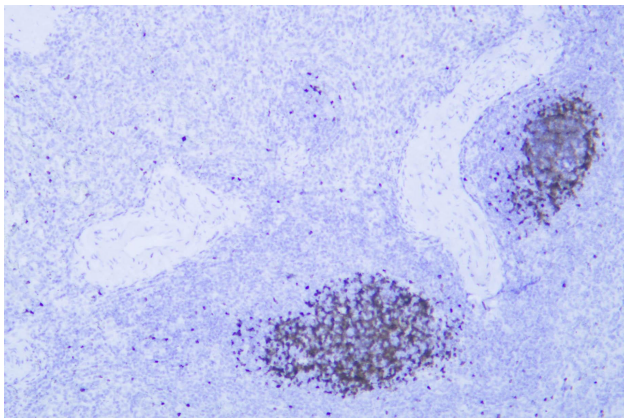
ELISA检测及定制服务 | 生化检测 | PCR、QPCR检测 | WB检测
ICO-IP检测 | 切片 | 染色 | 免疫组化 | 免疫荧光 | 透射电镜全套
| 宏基因组、转录组、基因组、蛋白组、代谢组测序



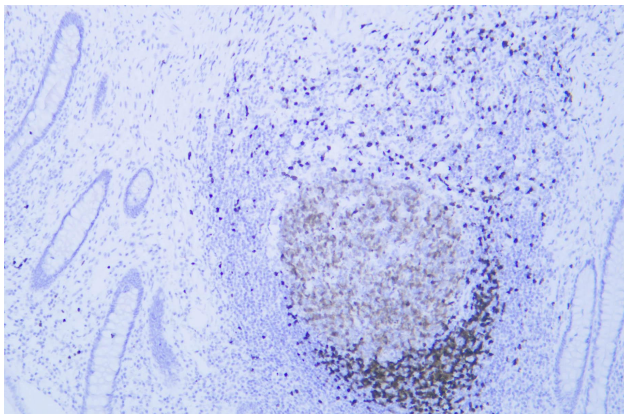
关注官网



关注客服



Human spleen was stained with anti-TCL1 rabbit mAb



Human appendix was stained with anti-TCL1 rabbit mAb

