



# Synaptophysin (ABT7R) Rabbit mAb (Ready to Use)

<b>Catalog No</b>	YP-rAb-18270
<b>Isotype</b>	IgG
<b>Reactivity</b>	Human
<b>Applications</b>	IHC
<b>Gene Name</b>	SYP
<b>Protein Name</b>	Major synaptic vesicle protein p38;MRX96;MRXSYP;Syn p38;Synaptophysin;Syp;SYPH;SYPH_HUMAN;SypI
<b>Purification Process</b>	Protein A
<b>Specificity</b>	This antibody detects endogenous levels of Synaptophysin
<b>Formulation</b>	The prediluted ready-to-use antibody is diluted in phosphate buffer saline containing stabilizing protein and 0.05% Proclin 300
<b>Source</b>	Monoclonal, Rabbit,IgG
<b>Dilution</b>	Ready to use for IHC Note: For IHC, we suggest antigen retrieval with TE buffer pH 9.0
<b>Concentration</b>	0.5 mg/ml
<b>Purity</b>	≥90%
<b>Storage Stability</b>	2° C to 8° C/1 year,Ship by ice bag
<b>Synonyms</b>	Major synaptic vesicle protein p38 ; MRX96 ; MRXSYP ; Syn p38 ; Synaptophysin ; Syp ; SYPH ; SYPH_HUMAN ; SypI
<b>Observed Band</b>	
<b>Calculated Molecular Weight</b>	
<b>Cell Pathway</b>	Cytoplasmic
<b>Tissue Specificity</b>	Pancreas/ Colon
<b>Function</b>	Domain:The calcium-binding activity is thought to be localized in the cytoplasmic tail of the protein.,Function:Possibly involved in structural functions as organizing other membrane components or in targeting the vesicles to the plasma membrane.,online information:Synaptophysin entry,PTM:Ubiquitinated; mediated by SIAH1 or SIAH2 and leading to its subsequent proteasomal degradation.,similarity:Belongs to the synaptophysin/synaptobrevin family.,similarity:Contains 1 MARVEL domain.,subunit:Homohexamer or homotetramer.,tissue specificity:Characteristic of a type of small (30-80 nm) neurosecretory vesicles, including presynaptic vesicles, but also vesicles of various neuroendocrine cells of both neuronal and epithelial phenotype.,





**Background**

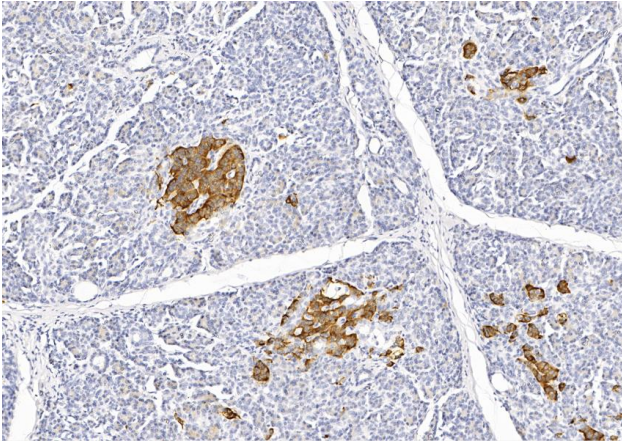
This gene encodes an integral membrane protein of small synaptic vesicles in brain and endocrine cells. The protein also binds cholesterol and is thought to direct targeting of vesicle-associated membrane protein 2 (synaptobrevin) to intracellular compartments. Mutations in this gene are associated with X-linked mental retardation (XLMR). [provided by RefSeq, Aug 2011],

**matters needing attention**

Avoid repeated freezing and thawing!

**Usage suggestions**

This product can be used in immunological reaction related experiments. For more information, please consult technical personnel.



Human pancreas tissue was stained with Anti-Synaptophysin (ABT7R) rabbit Antibody

