



Prostate-Specific Antigen(PSA) (ABT65R) Rabbit mAb (Ready to Use)

Catalog No	YP-rAb-18266
Isotype	IgG
Reactivity	Human
Applications	IHC
Gene Name	KLK3
Protein Name	Prostate-specific antigen (PSA) (Gamma-seminoprotein) (Seminin) (Kallikrein-3) (P-30 antigen) (Semenogelase)
Purification Process	Protein A
Specificity	This antibody detects endogenous levels of PSA
Formulation	The prediluted ready-to-use antibody is diluted in phosphate buffer saline containing stabilizing protein and 0.05% Proclin 300
Source	Monoclonal, Rabbit,IgG
Dilution	Ready to use for IHC Note: For IHC, we suggest antigen retrieval with TE buffer pH 9.0
Concentration	0.5 mg/ml
Purity	≥90%
Storage Stability	2° C to 8° C/1 year,Ship by ice bag
Synonyms	antigen, prostate-specific ; APS ; Gamma seminoprotein ; Gamma-seminoprotein ; hK3 ; Kallikrein 3 ; Kallikrein related peptidase 3 ; Kallikrein-3 ; KLK 3 ; KLK2A1 ; Kik3 ; KLK3_HUMAN ; P-30 antigen ; P30 antigen ; Prostate-specific antigen ; Psa ; Semenogelase ; Seminin
Observed Band	
Calculated Molecular Weight	
Cell Pathway	Cytoplasmic
Tissue Specificity	Leukocyte,PNS,Prostate,
Function	Catalytic activity:Preferential cleavage: -Tyr- -Xaa-.,Function:Hydrolyzes semenogelin-1 thus leading to the liquefaction of the seminal coagulum.,online information:Prostate-specific antigen entry,similarity:Belongs to the peptidase S1 family.,similarity:Belongs to the peptidase S1 family. Kallikrein subfamily.,similarity:Contains 1 peptidase S1 domain.,





Background

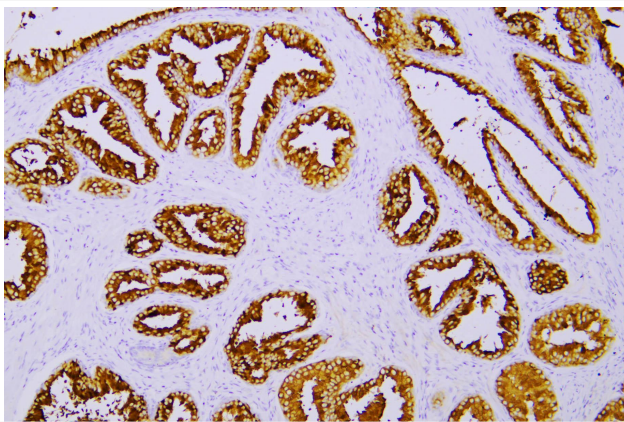
Kallikreins are a subgroup of serine proteases having diverse physiological functions. Growing evidence suggests that many kallikreins are implicated in carcinogenesis and some have potential as novel cancer and other disease biomarkers. This gene is one of the fifteen kallikrein subfamily members located in a cluster on chromosome 19. Its protein product is a protease present in seminal plasma. It is thought to function normally in the liquefaction of seminal coagulum, presumably by hydrolysis of the high molecular mass seminal vesicle protein. Serum level of this protein, called PSA in the clinical setting, is useful in the diagnosis and monitoring of prostatic carcinoma. Alternate splicing of this gene generates several transcript variants encoding different isoforms. [provided by RefSeq, Jul 2008],

matters needing attention

Avoid repeated freezing and thawing!

Usage suggestions

This product can be used in immunological reaction related experiments. For more information, please consult technical personnel.



Human prostate was stained with anti-Prostate-Specific Antigen(PSA) (ABT65R) rabbit mAb

杭州臻优品生物科技有限公司

热销产品:

蛋白、一抗、抗体对、ELISA试剂盒、生化试剂盒
CCK8试剂盒、QPCR检测试剂盒

检测服务:

ELISA检测及定制服务 | 生化检测 | PCR、QPCR检测 | WB检测
ICO-IP检测 | 切片 | 染色 | 免疫组化 | 免疫荧光 | 透射电镜全套
| 宏基因组、转录组、基因组、蛋白组、代谢组测序



关注官网



关注客服