



Mast cell tryptase (ABT233R) Rabbit mAb (Ready to Use)

Catalog No	YP-rAb-18245
Isotype	IgG
Reactivity	Human
Applications	IHC
Gene Name	TPSAB1
Protein Name	Tryptase alpha/beta-1 (Tryptase-1) (Tryptase I) (Tryptase alpha-1)
Purification Process	Protein A
Specificity	This antibody detects endogenous levels of Mast cell tryptase
Formulation	The prediluted ready-to-use antibody is diluted in phosphate buffer saline containing stabilizing protein and 0.05% Proclin 300
Source	Monoclonal, Rabbit,IgG
Dilution	Ready to use for IHC Note: For IHC, we suggest antigen retrieval with TE buffer pH 9.0
Concentration	0.5 mg/ml
Purity	≥90%
Storage Stability	2° C to 8° C/1 year,Ship by ice bag
Synonyms	alpha II ; Lung tryptase ; Mast cell alpha II tryptase ; Mast cell beta I tryptase ; Mast cell protease 7 ; Mast cell protease II ; MCP 7 ; Pituitary tryptase ; Skin tryptase ; TPS 1 ; TPS1 ; TPS2 ; TPSAB1 ; TPSAB1 protein ; TPSB1 ; Tryptase 1 ; Tryptase alpha 1 ; tryptase alpha I included ; Tryptase alpha II ; tryptase alpha II included ; tryptase alpha included ; tryptase alpha/beta 1 ; Tryptase beta 1 ; tryptase beta I included ; Tryptase I ; tryptase I included ; Tryptase III ; Tryptase skin
Observed Band	
Calculated Molecular Weight	
Cell Pathway	Cytoplasmic
Tissue Specificity	Isoform 1 and isoform 2 are expressed in lung, stomach, spleen, heart and skin; in these tissues, isoform 1 is predominant. Isoform 2 is expressed in aorta, spleen, and breast tumor, with highest levels in the endothelial cells of some blood vessels surrounding the aorta, as well as those surrounding the tumor and low levels, if any, in mast cells (at protein level).

杭州臻优品生物科技有限公司

热销产品:

蛋白、一抗、抗体对、ELISA试剂盒、生化试剂盒
CCK8试剂盒、QPCR检测试剂盒

检测服务:

ELISA检测及定制服务 | 生化检测 | PCR、QPCR检测 | WB检测
ICO-IP检测 | 切片 | 染色 | 免疫组化 | 免疫荧光 | 透射电镜全套
| 宏基因组、转录组、基因组、蛋白组、代谢组测序



关注官网



关注客服



Function

Catalytic activity: Preferential cleavage: Arg-|-Xaa, Lys-|-Xaa, but with more restricted specificity than trypsin.
 Function: Tryptase is the major neutral protease present in mast cells and is secreted upon the coupled activation-degranulation response of this cell type.
 Function: Tryptase is the major neutral protease present in mast cells and is secreted upon the coupled activation-degranulation response of this cell type. Has an immunoprotective role during bacterial infection. Required to efficiently combat K.pneumoniae infection.
 polymorphism: There are two alleles; beta-II and beta-III which differ by 3 residues.
 similarity: Belongs to the peptidase S1 family.
 similarity: Belongs to the peptidase S1 family. Tryptase subfamily.
 similarity: Contains 1 peptidase S1 domain.
 subcellular location: Released from the secretory granules upon mast cell activation.
 subunit: Homotetramer.

Background

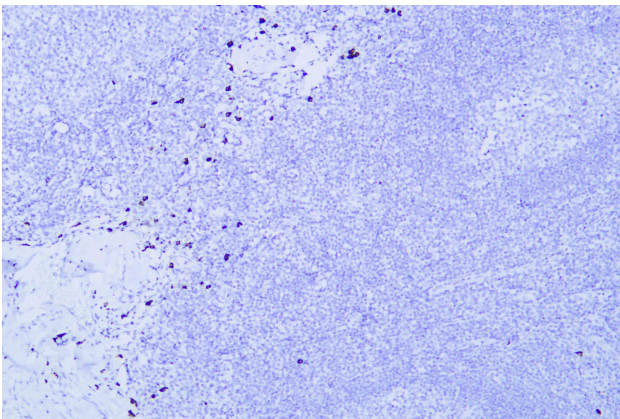
Tryptases comprise a family of trypsin-like serine proteases, the peptidase family S1. Tryptases are enzymatically active only as heparin-stabilized tetramers, and they are resistant to all known endogenous proteinase inhibitors. Several tryptase genes are clustered on chromosome 16p13.3. These genes are characterized by several distinct features. They have a highly conserved 3' UTR and contain tandem repeat sequences at the 5' flank and 3' UTR which are thought to play a role in regulation of the mRNA stability. These genes have an intron immediately upstream of the initiator Met codon, which separates the site of transcription initiation from protein coding sequence. This feature is characteristic of tryptases but is unusual in other genes. The alleles of this gene exhibit an unusual amount of sequence variation, such that the alleles were once thought to represent two separate gene

matters needing attention

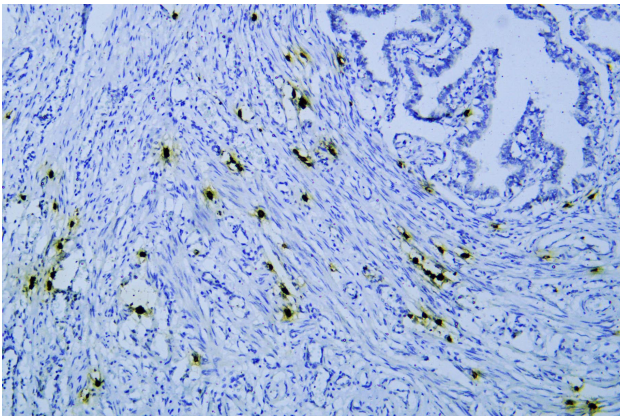
Avoid repeated freezing and thawing!

Usage suggestions

This product can be used in immunological reaction related experiments. For more information, please consult technical personnel.



Human tonsil was stained with anti-Mast cell tryptase (ABT233R) rabbit mAb



Human fallopian tube was stained with anti-Mast cell tryptase (ABT233R) rabbit mAb

