



# hCG $\beta$ (ABT75R) Rabbit mAb (Ready to Use)

<b>Catalog No</b>	YP-rAb-18236
<b>Isotype</b>	IgG
<b>Reactivity</b>	Human
<b>Applications</b>	IHC
<b>Gene Name</b>	CGB3/CGB5/CGB8/CGB7/CGB1/CGB2
<b>Protein Name</b>	CG beta;CG-beta;CgB;CGB3;CGB3_HUMAN;CGB5;CGB7;CGB7_HUMAN;CGB8;C GHB_HUMAN;Choriogonadotropin subunit beta 3;Choriogonadotropin subunit beta 7;Choriogonadotropin subunit beta;Chorionic gonadotropin beta polypeptide;Chorionic gonadotropin chain beta
<b>Purification Process</b>	Protein A
<b>Specificity</b>	This antibody detects endogenous levels of hCG $\beta$
<b>Formulation</b>	The prediluted ready-to-use antibody is diluted in phosphate buffer saline containing stabilizing protein and 0.05% Proclin 300
<b>Source</b>	Monoclonal, Rabbit,IgG
<b>Dilution</b>	Ready to use for IHC Note: For IHC, we suggest antigen retrieval with TE buffer pH 9.0
<b>Concentration</b>	0.5 mg/ml
<b>Purity</b>	$\geq 90\%$
<b>Storage Stability</b>	2° C to 8° C/1 year,Ship by ice bag
<b>Synonyms</b>	CG beta ; CG-beta ; CgB ; CGB3 ; CGB3_HUMAN ; CGB5 ; CGB7 ; CGB7_HUMAN ; CGB8 ; CGHB_HUMAN ; Choriogonadotropin subunit beta 3 ; Choriogonadotropin subunit beta 7 ; Choriogonadotropin subunit beta ; Chorionic gonadotropin beta polypeptide ; Chorionic gonadotropin chain beta
<b>Observed Band</b>	
<b>Calculated Molecular Weight</b>	
<b>Cell Pathway</b>	Cytoplasmic
<b>Tissue Specificity</b>	Placenta
<b>Function</b>	
<b>Background</b>	



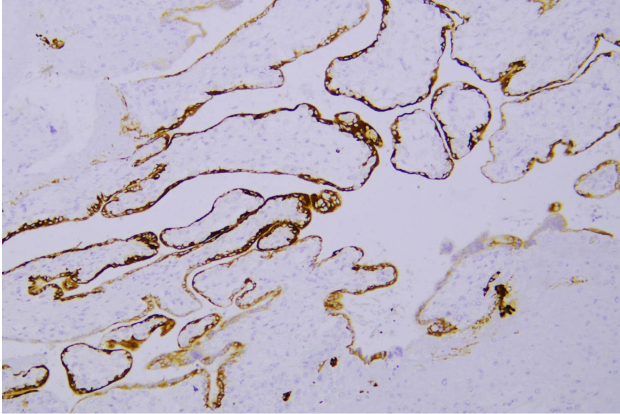


**matters needing attention**

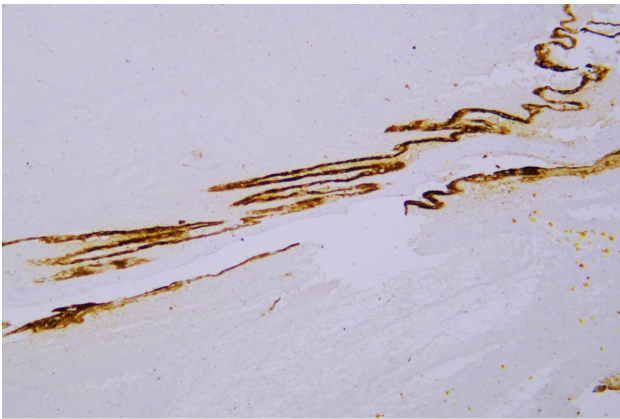
Avoid repeated freezing and thawing!

**Usage suggestions**

This product can be used in immunological reaction related experiments. For more information, please consult technical personnel.



Human placenta was stained with anti-hCG  $\beta$  (ABT75R) rabbit mAb



Human hydatidiform mole was stained with anti-hCG  $\beta$  (ABT75R) rabbit mAb

