



hCG α (ABT74R) Rabbit mAb (Ready to Use)

Catalog No	YP-rAb-18235
Isotype	IgG
Reactivity	Human
Applications	IHC
Gene Name	CGA
Protein Name	Glycoprotein hormones alpha chain (Anterior pituitary glycoprotein hormones common subunit alpha) (Choriogonadotropin alpha chain) (Chorionic gonadotrophin subunit alpha) (CG-alpha) (Follicle-stimulating hormone alpha chain) (FSH-alpha) (Follitropin alpha chain) (Luteinizing hormone alpha chain) (LSH-alpha) (Lutropin alpha chain) (Thyroid-stimulating hormone alpha chain) (TSH-alpha) (Thyrotropin alpha chain)
Purification Process	Protein A
Specificity	This antibody detects endogenous levels of hCG
Formulation	The prediluted ready-to-use antibody is diluted in phosphate buffer saline containing stabilizing protein and 0.05% Proclin 300
Source	Monoclonal, Rabbit,IgG
Dilution	Ready to use for IHC Note: For IHC, we suggest antigen retrieval with TE buffer pH 9.0
Concentration	0.5 mg/ml
Purity	$\geq 90\%$
Storage Stability	2° C to 8° C/1 year,Ship by ice bag
Synonyms	Anterior pituitary glycoprotein hormones common subunit alpha ; CG alpha ; CG-alpha ; cga ; Choriogonadotropin alpha chain ; Chorionic Gonadotrophin Alpha ; Chorionic Gonadotrophin Alpha Subunit ; Chorionic gonadotrophin subunit alpha ; chorionic gonadotropin, alpha polypeptide ; Follicle-stimulating hormone alpha ; Follicle-stimulating hormone alpha chain ; follicle-stimulating hormone alpha subunit ; Follitropin alpha ; Follitropin alpha chain ; FSH Alpha ; FSH-alpha ; FSHA ; GLHA_HUMAN ; Glycoprotein hormones alpha chain ; Glycoprotein Hormones Alpha Polypeptide ; GPH Alpha ; GPHa ; GPHA1 ; HCG ; hyrotropin alpha ; LH-alpha ; LHA ; LSH alpha ; LSH-alpha ; Luteinizing hormone alpha ; Luteinizing hormone alpha chain ; Lutropin alpha ; Lutropin alpha chain ; Thyroid Stimulating Hormone Alpha ; Thyroid Stimulating Hormone Alpha Chain ; Thyroid-stimulating hormone alpha chain ; Thyrotropin alpha chain ; TSH Alpha ; TSH-alpha ; TSHA





Observed Band

Calculated Molecular Weight

Cell Pathway Secreted .

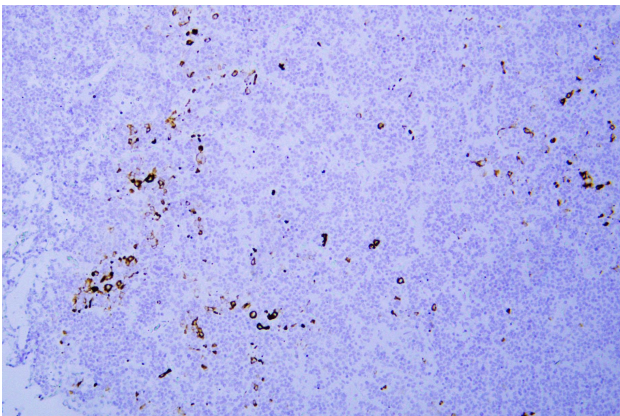
Tissue Specificity Pituitary,Placenta,

Function online information:Proteic grace - Issue 77 of December 2006,similarity:Belongs to the glycoprotein hormones subunit alpha family.,subunit:Heterodimer of a common alpha chain and a unique beta chain which confers biological specificity to thyrotropin, lutropin, follitropin and gonadotropin.,

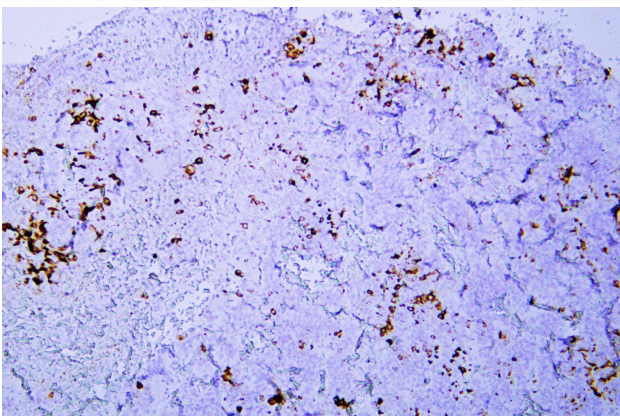
Background The four human glycoprotein hormones chorionic gonadotropin (CG), luteinizing hormone (LH), follicle stimulating hormone (FSH), and thyroid stimulating hormone (TSH) are dimers consisting of alpha and beta subunits that are associated noncovalently. The alpha subunits of these hormones are identical, however, their beta chains are unique and confer biological specificity. The protein encoded by this gene is the alpha subunit and belongs to the glycoprotein hormones alpha chain family. Two transcript variants encoding different isoforms have been found for this gene. [provided by RefSeq, Nov 2011],

matters needing attention Avoid repeated freezing and thawing!

Usage suggestions This product can be used in immunological reaction related experiments. For more information, please consult technical personnel.

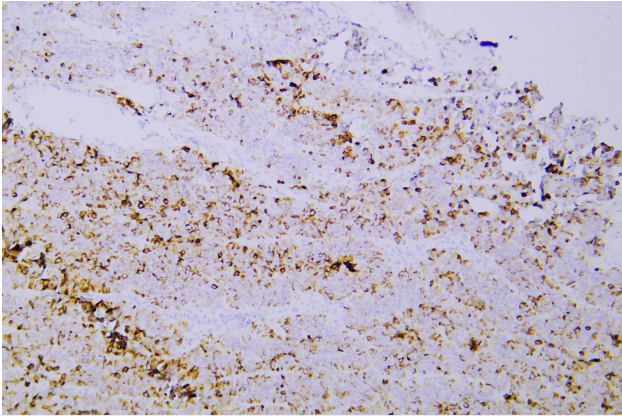


Human pituitary adenoma was stained with anti-hCG α (ABT74R) rabbit mAb

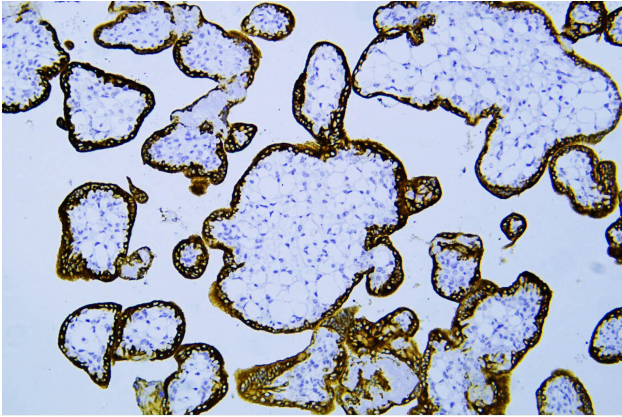


Human pituitary adenoma was stained with anti-hCG α (ABT74R) rabbit mAb

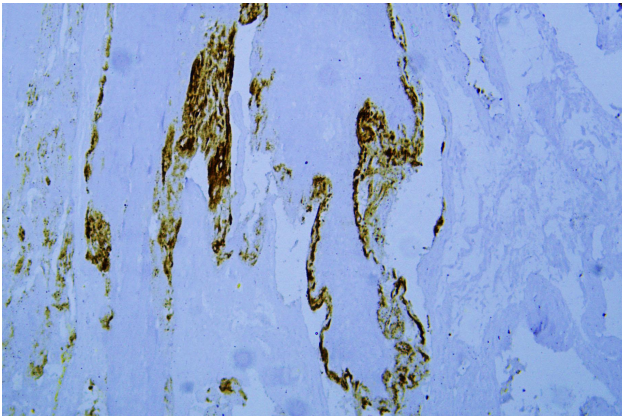




Human pituitary adenoma was stained with anti-hCG α (ABT74R) rabbit mAb



Human placenta was stained with anti-hCG α (ABT74R) rabbit mAb



Human hydatidiform mole was stained with anti-hCG α (ABT74R) rabbit mAb

杭州臻优品生物科技有限公司

热销产品:

蛋白、一抗、抗体对、ELISA试剂盒、生化试剂盒
CCK8试剂盒、QPCR检测试剂盒

检测服务:

ELISA检测及定制服务 | 生化检测 | PCR、QPCR检测 | WB检测
ICO-IP检测 | 切片 | 染色 | 免疫组化 | 免疫荧光 | 透射电镜全套
| 宏基因组、转录组、基因组、蛋白组、代谢组测序



关注官网



关注客服