



# Glypican-3(GPC3) Rabbit mAb (Ready to Use)

<b>Catalog No</b>	YP-rAb-18233
<b>Isotype</b>	IgG
<b>Reactivity</b>	Human
<b>Applications</b>	IHC
<b>Gene Name</b>	GPC3
<b>Protein Name</b>	Glypican-3(GPC3)
<b>Purification Process</b>	Protein A
<b>Specificity</b>	This antibody detects endogenous levels of Glypican-3
<b>Formulation</b>	The prediluted ready-to-use antibody is diluted in phosphate buffer saline containing stabilizing protein and 0.05% Proclin 300
<b>Source</b>	Monoclonal, Rabbit,IgG
<b>Dilution</b>	Ready to use for IHC Note: For IHC, we suggest antigen retrieval with TE buffer pH 9.0
<b>Concentration</b>	0.5 mg/ml
<b>Purity</b>	≥90%
<b>Storage Stability</b>	2° C to 8° C/1 year,Ship by ice bag
<b>Synonyms</b>	DGSX ; Glypican proteoglycan 3 ; Glypican-3 [Precursor] ; Gpc3 ; GPC3_HUMAN ; GTR2 2 ; GTR2-2 ; Heparan sulphate proteoglycan ; Intestinal protein OCI 5 ; Intestinal protein OCI-5 ; MXR7 ; OCI 5 ; OCI-5 ; OCI5 ; SDYS ; Secreted glypican-3 ; SGB ; SGBS ; SGBS1
<b>Observed Band</b>	
<b>Calculated Molecular Weight</b>	
<b>Cell Pathway</b>	Cytoplasmic
<b>Tissue Specificity</b>	Highly expressed in lung, liver and kidney.
<b>Function</b>	Disease:Defects in GPC3 are the cause of Simpson-Golabi-Behmel syndrome (SGBS) [MIM:312870]; also known as Simpson dysmorphia syndrome (SDYS). SGBS is a condition characterized by pre- and postnatal overgrowth (gigantism) with visceral and skeletal anomalies.,Function:Cell surface proteoglycan that bears heparan sulfate.,Function:Cell surface proteoglycan that bears heparan sulfate. May be involved in the suppression/modulation of growth in the predominantly mesodermal tissues and organs. May play a role in the modulation of IGF2 interactions with its receptor and thereby modulate its function. May regulate growth and tumor predisposition.,similarity:Belongs to the glypican

## 杭州臻优品生物科技有限公司

### 热销产品:

蛋白、一抗、抗体对、ELISA试剂盒、生化试剂盒  
CCK8试剂盒、QPCR检测试剂盒

### 检测服务:

ELISA检测及定制服务 | 生化检测 | PCR、QPCR检测 | WB检测  
ICO-IP检测 | 切片 | 染色 | 免疫组化 | 免疫荧光 | 透射电镜全套  
| 宏基因组、转录组、基因组、蛋白组、代谢组测序



关注官网



关注客服



family.,tissue specificity:Highly expressed in lung, liver and kidney.,

### Background

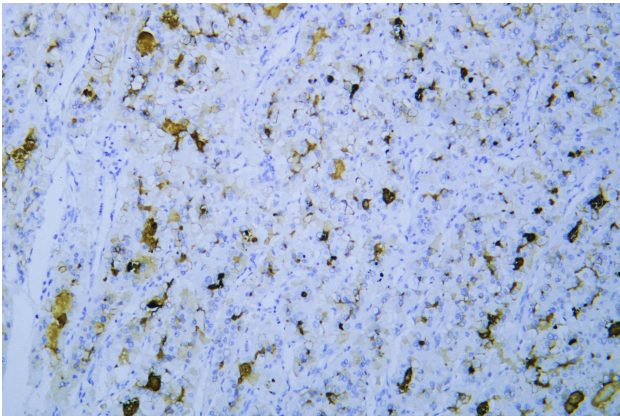
Cell surface heparan sulfate proteoglycans are composed of a membrane-associated protein core substituted with a variable number of heparan sulfate chains. Members of the glypican-related integral membrane proteoglycan family (GRIPS) contain a core protein anchored to the cytoplasmic membrane via a glycosyl phosphatidylinositol linkage. These proteins may play a role in the control of cell division and growth regulation. The protein encoded by this gene can bind to and inhibit the dipeptidyl peptidase activity of CD26, and it can induce apoptosis in certain cell types. Deletion mutations in this gene are associated with Simpson-Golabi-Behmel syndrome, also known as Simpson dysmorphia syndrome. Alternative splicing results in multiple transcript variants. [provided by RefSeq, Sep 2009],

### matters needing attention

Avoid repeated freezing and thawing!

### Usage suggestions

This product can be used in immunological reaction related experiments. For more information, please consult technical personnel.



Human hepatocellular carcinoma was stained with anti-Glypican-3(GPC3) rabbit mAb

