



# GCDFP-15 Rabbit mAb (Ready to Use)

<b>Catalog No</b>	YP-rAb-18230
<b>Isotype</b>	IgG
<b>Reactivity</b>	Human
<b>Applications</b>	IHC
<b>Gene Name</b>	PIP
<b>Protein Name</b>	Gross cystic disease fluid protein-15 (GCDFP-15)
<b>Purification Process</b>	Protein A
<b>Specificity</b>	This antibody detects endogenous levels of GCDFP-15
<b>Formulation</b>	The prediluted ready-to-use antibody is diluted in phosphate buffer saline containing stabilizing protein and 0.05% Proclin 300
<b>Source</b>	Monoclonal, Rabbit,IgG
<b>Dilution</b>	Ready to use for IHC Note: For IHC, we suggest antigen retrieval with TE buffer pH 9.0
<b>Concentration</b>	0.5 mg/ml
<b>Purity</b>	≥90%
<b>Storage Stability</b>	2° C to 8° C/1 year,Ship by ice bag
<b>Synonyms</b>	BRST-2 ; BRST2 ; GCDFP-15 ; GCDGP15 ; gp17 ; GPIP4 ; Gross cystic disease fluid protein 15 ; PIP ; PIP_HUMAN ; Prolactin induced protein ; Prolactin inducible protein precursor ; Prolactin-induced protein ; Prolactin-inducible protein ; SABP ; Secretory actin binding protein ; Secretory actin-binding protein
<b>Observed Band</b>	
<b>Calculated Molecular Weight</b>	
<b>Cell Pathway</b>	Cytoplasmic
<b>Tissue Specificity</b>	Expressed in pathological conditions of the mammary gland and in several exocrine tissues, such as the lacrimal, salivary, and sweat glands.
<b>Function</b>	induction:By prolactin and androgen; inhibited by estrogen.,similarity:Belongs to the PIP family.,subunit:Monomer. Interacts with AZGP1.,tissue specificity:Expressed in pathological conditions of the mammary gland and in several exocrine tissues, such as the lacrimal, salivary, and sweat glands.,
<b>Background</b>	



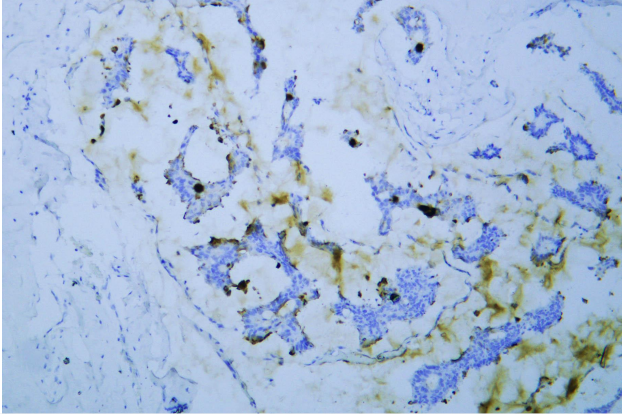


**matters needing attention**

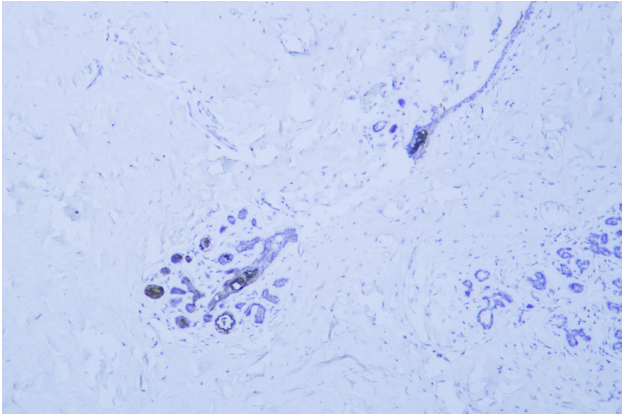
Avoid repeated freezing and thawing!

**Usage suggestions**

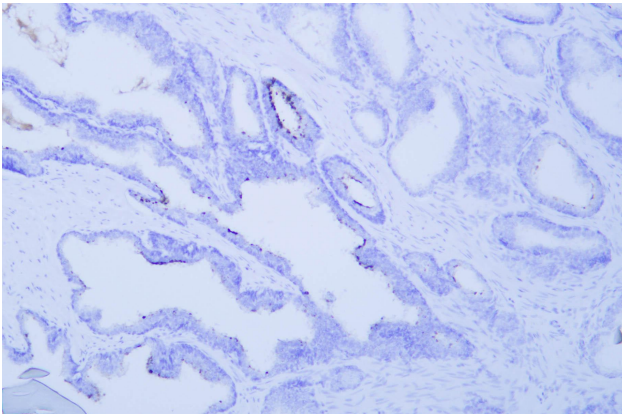
This product can be used in immunological reaction related experiments. For more information, please consult technical personnel.



Human breast carcinoma was stained with anti-Gross cystic disease fluid protein-15 (GCDFP-15) rabbit mAb



Human breast carcinoma was stained with anti-Gross cystic disease fluid protein-15 (GCDFP-15) rabbit mAb



Human prostate was stained with anti-Gross cystic disease fluid protein-15 (GCDFP-15) rabbit mAb

**杭州臻优品生物科技有限公司**

**热销产品:**

蛋白、一抗、抗体对、ELISA试剂盒、生化试剂盒  
CCK8试剂盒、QPCR检测试剂盒

**检测服务:**

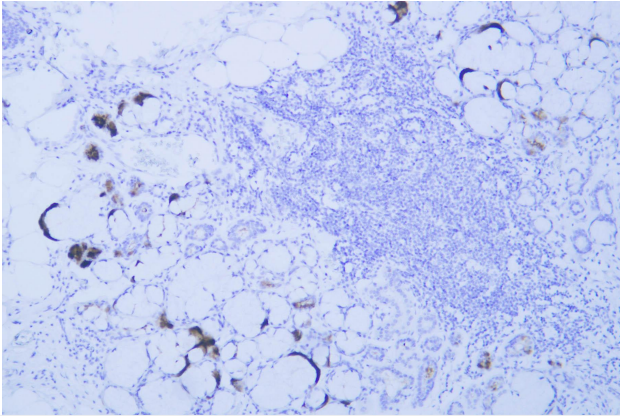
ELISA检测及定制服务 | 生化检测 | PCR、QPCR检测 | WB检测  
ICO-IP检测 | 切片 | 染色 | 免疫组化 | 免疫荧光 | 透射电镜全套  
| 宏基因组、转录组、基因组、蛋白组、代谢组测序



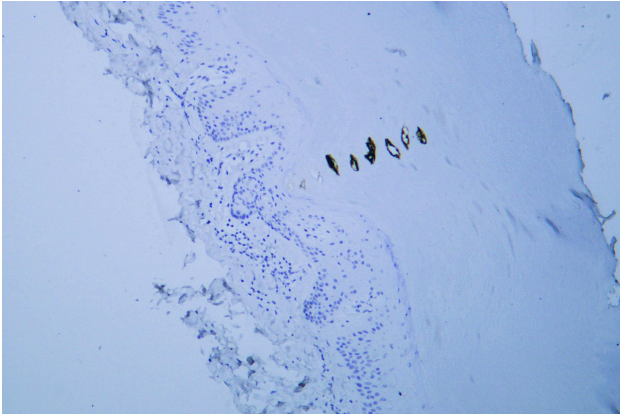
关注官网



关注客服



Human salivary glands was stained with anti-Gross cystic disease fluid protein-15 (GCDFFP-15) rabbit mAb



Human skin was stained with anti-Gross cystic disease fluid protein-15 (GCDFFP-15) rabbit mAb

## 杭州臻优品生物科技有限公司

### 热销产品:

蛋白、一抗、抗体对、ELISA试剂盒、生化试剂盒  
CCK8试剂盒、QPCR检测试剂盒

### 检测服务:

ELISA检测及定制服务 | 生化检测 | PCR、QPCR检测 | WB检测  
ICO-IP检测 | 切片 | 染色 | 免疫组化 | 免疫荧光 | 透射电镜全套  
| 宏基因组、转录组、基因组、蛋白组、代谢组测序



关注官网



关注客服