



EpCAM (ABT26R) Rabbit mAb (Ready to Use)

Catalog No	YP-rAb-18224
Isotype	IgG
Reactivity	Human
Applications	IHC
Gene Name	EPCAM;GA733-2;M1S2;M4S1;MIC18;TACSTD1;TROP1
Protein Name	Epithelial cell adhesion molecule
Purification Process	Protein A
Specificity	This antibody detects endogenous levels of EpCAM
Formulation	The prediluted ready-to-use antibody is diluted in phosphate buffer saline containing stabilizing protein and 0.05% Proclin 300
Source	Monoclonal, Rabbit,IgG
Dilution	Ready to use for IHC Note: For IHC, we suggest antigen retrieval with TE buffer pH 9.0
Concentration	0.5 mg/ml
Purity	≥90%
Storage Stability	2° C to 8° C/1 year,Ship by ice bag
Synonyms	EPCAM ; GA733-2 ; M1S2 ; M4S1 ; MIC18 ; TACSTD1 ; TROP1 ; Epithelial cell adhesion molecule ; Ep-CAM ; Adenocarcinoma-associated antigen ; Cell surface glycoprotein Trop-1 ; Epithelial cell surface antigen ; Epithelial glycoprotein ; EGP ; Epithelial gly
Observed Band	
Calculated Molecular Weight	
Cell Pathway	Lateral cell membrane ; Single-pass type I membrane protein . Cell junction, tight junction . Colocalizes with CLDN7 at the lateral cell membrane and tight junction. .
Tissue Specificity	Highly and selectively expressed by undifferentiated rather than differentiated embryonic stem cells (ESC). Levels rapidly diminish as soon as ESC's differentiate (at protein levels). Expressed in almost all epithelial cell membranes but not on mesodermal or neural cell membranes. Found on the surface of adenocarcinoma.
Function	
Background	This gene encodes a carcinoma-associated antigen and is a member of a family that includes at least two type I membrane proteins. This antigen is expressed on most normal epithelial cells and gastrointestinal carcinomas and functions as a

杭州臻优品生物科技有限公司

热销产品:

蛋白、一抗、抗体对、ELISA试剂盒、生化试剂盒
CCK8试剂盒、QPCR检测试剂盒

检测服务:

ELISA检测及定制服务 | 生化检测 | PCR、QPCR检测 | WB检测
ICO-IP检测 | 切片 | 染色 | 免疫组化 | 免疫荧光 | 透射电镜全套
| 宏基因组、转录组、基因组、蛋白组、代谢组测序



关注官网



关注客服



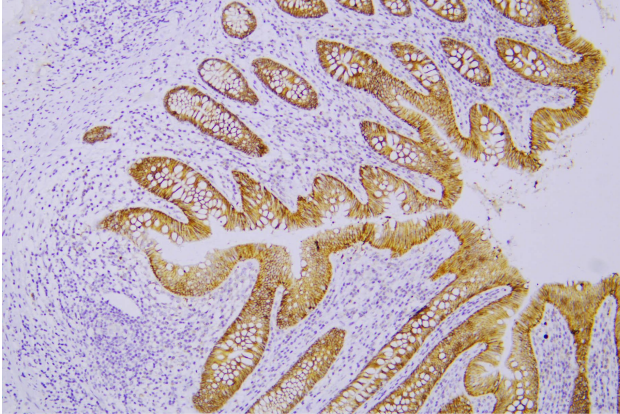
homotypic calcium-independent cell adhesion molecule. The antigen is being used as a target for immunotherapy treatment of human carcinomas. Mutations in this gene result in congenital tufting enteropathy. [provided by RefSeq, Dec 2008],

matters needing attention

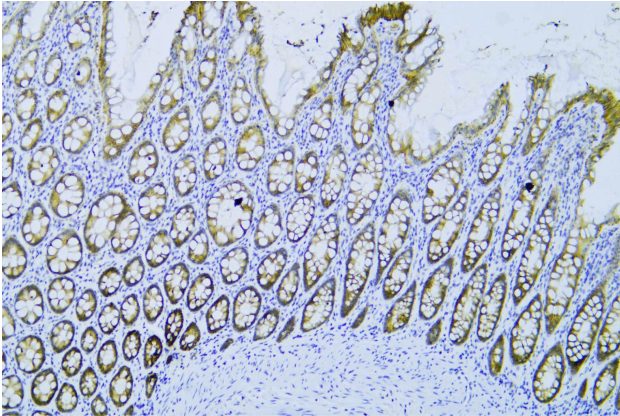
Avoid repeated freezing and thawing!

Usage suggestions

This product can be used in immunological reaction related experiments. For more information, please consult technical personnel.



Human appendix was stained with anti-Ep-CAM (ABT26R) rabbit mAb



Human colon was stained with anti-Ep-CAM (ABT26R) rabbit mAb

杭州臻优品生物科技有限公司

热销产品:

蛋白、一抗、抗体对、ELISA试剂盒、生化试剂盒
CCK8试剂盒、QPCR检测试剂盒

检测服务:

ELISA检测及定制服务 | 生化检测 | PCR、QPCR检测 | WB检测
ICO-IP检测 | 切片 | 染色 | 免疫组化 | 免疫荧光 | 透射电镜全套
| 宏基因组、转录组、基因组、蛋白组、代谢组测序



关注官网



关注客服