



# Claudin 7 (ABT189R) Rabbit mAb (Ready to Use)

<b>Catalog No</b>	YP-rAb-18222
<b>Isotype</b>	IgG
<b>Reactivity</b>	Human,Mouse,Rat
<b>Applications</b>	IHC
<b>Gene Name</b>	CLDN7 CEPTRL2 CPETRL2
<b>Protein Name</b>	Claudin-7
<b>Purification Process</b>	Protein A
<b>Specificity</b>	This antibody detects endogenous levels of Claudin 7
<b>Formulation</b>	The prediluted ready-to-use antibody is diluted in phosphate buffer saline containing stabilizing protein and 0.05% Proclin 300
<b>Source</b>	Monoclonal, Rabbit,IgG
<b>Dilution</b>	Ready to use for IHC Note: For IHC, we suggest antigen retrieval with TE buffer pH 9.0
<b>Concentration</b>	0.5 mg/ml
<b>Purity</b>	≥90%
<b>Storage Stability</b>	2° C to 8° C/1 year,Ship by ice bag
<b>Synonyms</b>	CEPTR L2 ; CEPTRL 2 ; CEPTRL2 ; Claudin 1 ; Claudin 7 ; Claudin 9 ; Claudin-7 ; Claudin1 ; Claudin7 ; Claudin9 ; CLD7_HUMAN ; CLDN 7 ; CLDN-7 ; CLDN7 ; Clostridium perfringens enterotoxin receptor like 2 ; CPETR L2 ; CPETRL 2 ; CPETRL2 ; Hs.84359
<b>Observed Band</b>	
<b>Calculated Molecular Weight</b>	
<b>Cell Pathway</b>	Membranous
<b>Tissue Specificity</b>	kindey
<b>Function</b>	Plays a major role in tight junction-specific obliteration of the intercellular space.,induction:By androgens.,similarity:Belongs to the claudin family.,subunit:Directly interacts with TJP1/ZO-1, TJP2/ZO-2 and TJP3/ZO-3.,tissue specificity:Expressed in kidney, lung and prostate. Isoform 1 seems to be predominant, except in some normal prostate samples, where isoform 2 is the major form. Down-regulated in breast cancers, including ductal carcinoma in situ (DCIS), lobular carcinoma in situ (LCIS) and invasive ductal carcinoma (IDC) (at protein level), as well as in several cancer cell lines. Loss of expression correlates with histological grade, occurring predominantly in

## 杭州臻优品生物科技有限公司

### 热销产品:

蛋白、一抗、抗体对、ELISA试剂盒、生化试剂盒  
CCK8试剂盒、QPCR检测试剂盒

### 检测服务:

ELISA检测及定制服务 | 生化检测 | PCR、QPCR检测 | WB检测  
ICO-IP检测 | 切片 | 染色 | 免疫组化 | 免疫荧光 | 透射电镜全套  
| 宏基因组、转录组、基因组、蛋白组、代谢组测序



关注官网



关注客服



high-grade lesions.,

### Background

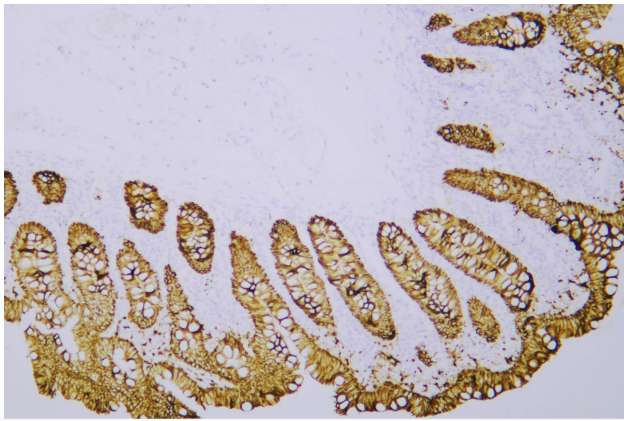
This gene encodes a member of the claudin family. Claudins are integral membrane proteins and components of tight junction strands. Tight junction strands serve as a physical barrier to prevent solutes and water from passing freely through the paracellular space between epithelial or endothelial cell sheets, and also play critical roles in maintaining cell polarity and signal transductions. Differential expression of this gene has been observed in different types of malignancies, including breast cancer, ovarian cancer, hepatocellular carcinomas, urinary tumors, prostate cancer, lung cancer, head and neck cancers, thyroid carcinomas, etc.. Alternatively spliced transcript variants encoding different isoforms have been found.[provided by RefSeq, May 2010],

### matters needing attention

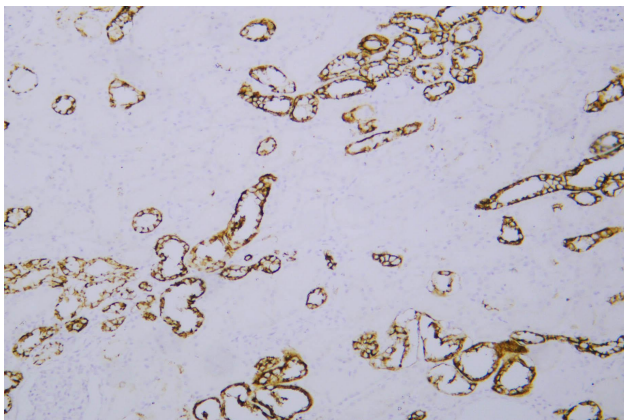
Avoid repeated freezing and thawing!

### Usage suggestions

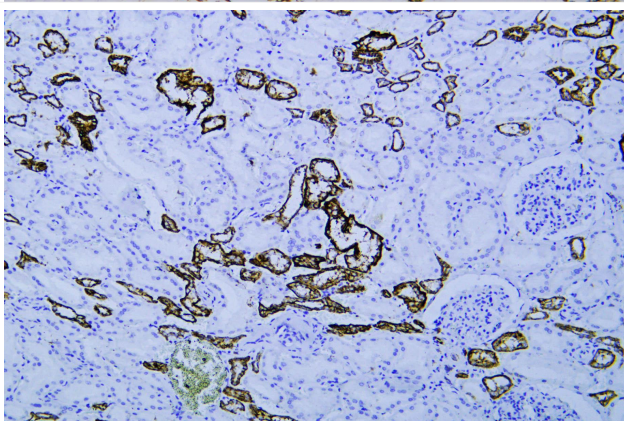
This product can be used in immunological reaction related experiments. For more information, please consult technical personnel.



Human colon was stained with anti-Claudin 7 (ABT189R) rabbit mAb



Human kidney was stained with anti-Claudin 7 (ABT189R) rabbit mAb



Human kidney was stained with anti-Claudin 7 (ABT189R) rabbit mAb

## 杭州臻优品生物科技有限公司

### 热销产品:

蛋白、一抗、抗体对、ELISA试剂盒、生化试剂盒  
CCK8试剂盒、QPCR检测试剂盒

### 检测服务:

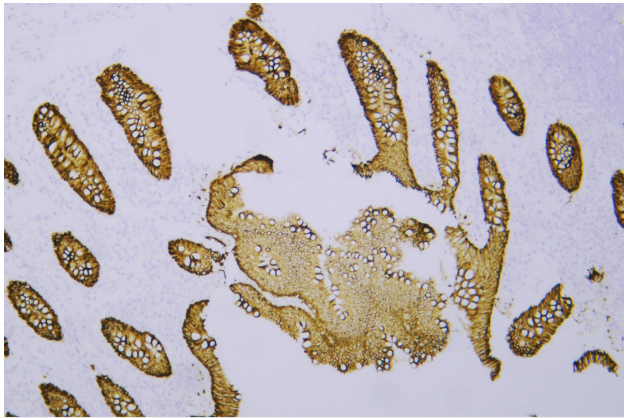
ELISA检测及定制服务 | 生化检测 | PCR、QPCR检测 | WB检测  
ICO-IP检测 | 切片 | 染色 | 免疫组化 | 免疫荧光 | 透射电镜全套  
| 宏基因组、转录组、基因组、蛋白组、代谢组测序



关注官网



关注客服



Human appendix was stained with anti-Claudin 7 (ABT189R) rabbit mAb

## 杭州臻优品生物科技有限公司

### 热销产品:

蛋白、一抗、抗体对、ELISA试剂盒、生化试剂盒  
CCK8试剂盒、QPCR检测试剂盒

### 检测服务:

ELISA检测及定制服务 | 生化检测 | PCR、QPCR检测 | WB检测  
ICO-IP检测 | 切片 | 染色 | 免疫组化 | 免疫荧光 | 透射电镜全套  
| 宏基因组、转录组、基因组、蛋白组、代谢组测序



关注官网



关注客服