



# Claudin 4 (ABT188R) Rabbit mAb (Ready to Use)

<b>Catalog No</b>	YP-rAb-18221
<b>Isotype</b>	IgG
<b>Reactivity</b>	Human
<b>Applications</b>	IHC
<b>Gene Name</b>	CLDN4
<b>Protein Name</b>	Claudin-4 (Clostridium perfringens enterotoxin receptor) (CPE-R) (CPE-receptor) (Williams-Beuren syndrome chromosomal region 8 protein)
<b>Purification Process</b>	Protein A
<b>Specificity</b>	This antibody detects endogenous levels of Claudin-4
<b>Formulation</b>	The prediluted ready-to-use antibody is diluted in phosphate buffer saline containing stabilizing protein and 0.05% Proclin 300
<b>Source</b>	Monoclonal, Rabbit,IgG
<b>Dilution</b>	Ready to use for IHC Note: For IHC, we suggest antigen retrieval with TE buffer pH 9.0
<b>Concentration</b>	0.5 mg/ml
<b>Purity</b>	≥90%
<b>Storage Stability</b>	2° C to 8° C/1 year,Ship by ice bag
<b>Synonyms</b>	Clostridium perfringens enterotoxin receptor, Williams-Beuren syndrome chromosomal region 8 protein
<b>Observed Band</b>	
<b>Calculated Molecular Weight</b>	
<b>Cell Pathway</b>	Cell junction, tight junction . Cell membrane ; Multi-pass membrane protein . CLDN4 is required for tight junction localization in the kidney. .
<b>Tissue Specificity</b>	Colon,Fetal brain,Trachea,
<b>Function</b>	Disease:Haploinsufficiency of CLDN4 may be the cause of certain cardiovascular and musculo-skeletal abnormalities observed in Williams-Beuren syndrome (WBS), a rare developmental disorder. It is a contiguous gene deletion syndrome involving genes from chromosome band 7q11.23.,Function:Plays a major role in tight junction-specific obliteration of the intercellular space.,similarity:Belongs to the claudin family.,subunit:Directly interacts with TJP1/ZO-1, TJP2/ZO-2 and TJP3/ZO-3.,
<b>Background</b>	The protein encoded by this intronless gene belongs to the claudin family. Claudins are integral membrane proteins that are components of the epithelial cell tight junctions, which regulate movement of solutes and ions through the





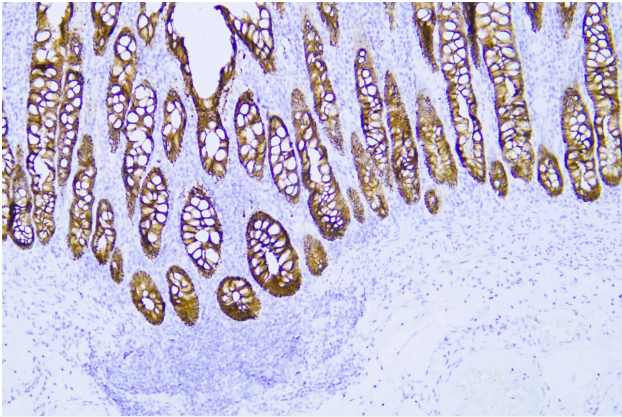
paracellular space. This protein is a high-affinity receptor for Clostridium perfringens enterotoxin (CPE) and may play a role in internal organ development and function during pre- and postnatal life. This gene is deleted in Williams-Beuren syndrome, a neurodevelopmental disorder affecting multiple systems. [provided by RefSeq, Sep 2013],

**matters needing attention**

Avoid repeated freezing and thawing!

**Usage suggestions**

This product can be used in immunological reaction related experiments. For more information, please consult technical personnel.



Human colon was stained with anti-Claudin 4 (ABT188R) rabbit mAb

