



# Cytokeratin 7 (CK7) (ABT25R) Rabbit mAb (Ready to Use)

<b>Catalog No</b>	YP-rAb-18220
<b>Isotype</b>	IgG
<b>Reactivity</b>	Human
<b>Applications</b>	IHC
<b>Gene Name</b>	KRT7 SCL
<b>Protein Name</b>	CK 7;CK-7;CK7;Cytokeratin 7;Cytokeratin-7;D15Wsu77e;K2C7;K2C7 HUMAN;K7;Keratin 7;Keratin 7, type II;Keratin type II cytoskeletal 7;Keratin, 55K type II cytoskeletal;Keratin, simple epithelial;Keratin, simple epithelial type I, K7;Keratin, type II cytoskeletal 7;Keratin-7;Krt2-7;KRT7;MGC11625;MGC129731;MGC3625;Sarcolectin;SCL;Type II mesothelial keratin K7;Type-II keratin Kb7
<b>Purification Process</b>	Protein A
<b>Specificity</b>	This antibody detects endogenous levels of Cytokeratin 7
<b>Formulation</b>	The prediluted ready-to-use antibody is diluted in phosphate buffer saline containing stabilizing protein and 0.05% Proclin 300
<b>Source</b>	Monoclonal, Rabbit,IgG
<b>Dilution</b>	Ready to use for IHC Note: For IHC, we suggest antigen retrieval with TE buffer pH 9.0
<b>Concentration</b>	0.5 mg/ml
<b>Purity</b>	≥90%
<b>Storage Stability</b>	2° C to 8° C/1 year,Ship by ice bag
<b>Synonyms</b>	CK 7 ; CK-7 ; CK7 ; Cytokeratin 7 ; CytokeRatin-7 ; D15Wsu77e ; K2C7 ; K2C7_HUMAN ; K7 ; KeRatin 7 ; KeRatin 7, type II ; KeRatin type II cytoskeletal 7 ; KeRatin, 55K type II cytoskeletal ; KeRatin, simple epithelial ; KeRatin, simple epithelial type I, K7 ; KeRatin, type II cytoskeletal 7 ; KeRatin-7 ; Krt2-7 ; KRT7 ; MGC11625 ; MGC129731 ; MGC3625 ; Sarcolectin ; SCL ; Type II mesothelial keRatin K7 ; Type-II keRatin Kb7
<b>Observed Band</b>	
<b>Calculated Molecular Weight</b>	
<b>Cell Pathway</b>	Cytoplasmic, Membranous
<b>Tissue Specificity</b>	Pancreas

杭州臻优品生物科技有限公司

热销产品:

蛋白、一抗、抗体对、ELISA试剂盒、生化试剂盒  
CCK8试剂盒、QPCR检测试剂盒

检测服务:

ELISA检测及定制服务 | 生化检测 | PCR、QPCR检测 | WB检测  
ICO-IP检测 | 切片 | 染色 | 免疫组化 | 免疫荧光 | 透射电镜全套  
| 宏基因组、转录组、基因组、蛋白组、代谢组测序



关注官网



关注客服



## Function

Blocks interferon-dependent interphase and stimulates DNA synthesis in cells. Involved in the translational regulation of the human papillomavirus type 16 E7 mRNA (HPV16 E7).,induction:Up-regulated by retinoic acid.,mass spectrometry: PubMed:11840567,miscellaneous:There are two types of cytoskeletal and microfibrillar keratin: I (acidic; 40-55 kDa) and II (neutral to basic; 56-70 kDa).,PTM:Arg-20 is dimethylated, probably to asymmetric dimethylarginine.,similarity:Belongs to the intermediate filament family.,subunit:Heterotetramer of two type I and two type II keratins. Interacts with eukaryotic translation initiator factor 3 (eIF3) subunit EIF3S10 and with HPV16 E7.,tissue specificity:Expressed in cultured epidermal, bronchial and mesothelial cells but absent in colon, ectocervix and liver. Observed throughout the glandular cells in the junction between stomach and esophagus but is absent in the esophagus.,

## Background

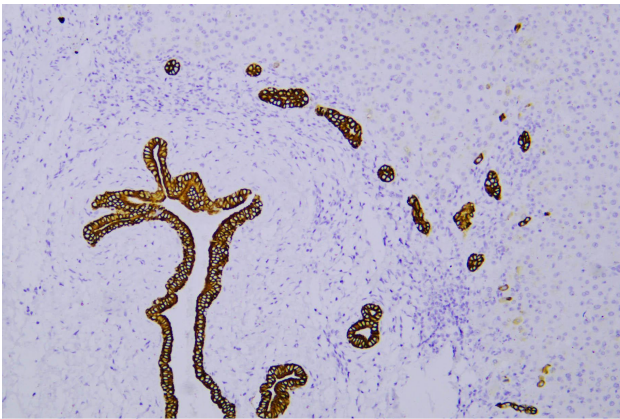
keratin 7(KRT7) Homo sapiens The protein encoded by this gene is a member of the keratin gene family. The type II cytokeratins consist of basic or neutral proteins which are arranged in pairs of heterotypic keratin chains coexpressed during differentiation of simple and stratified epithelial tissues. This type II cytokeratin is specifically expressed in the simple epithelia lining the cavities of the internal organs and in the gland ducts and blood vessels. The genes encoding the type II cytokeratins are clustered in a region of chromosome 12q12-q13. Alternative splicing may result in several transcript variants; however, not all variants have been fully described. [provided by RefSeq, Jul 2008],

## matters needing attention

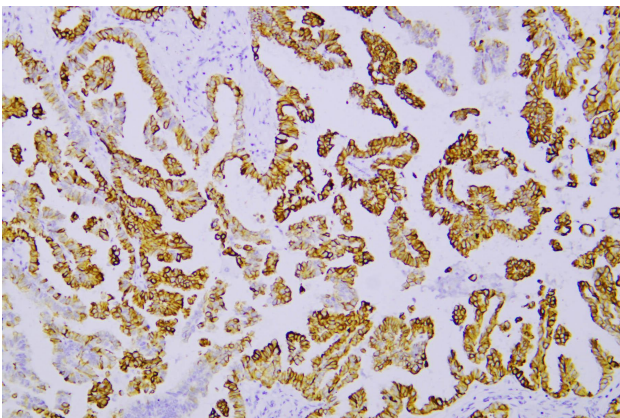
Avoid repeated freezing and thawing!

## Usage suggestions

This product can be used in immunological reaction related experiments. For more information, please consult technical personnel.



Human liver was stained with anti-Cytokeratin 7 (CK7) (ABT25R) rabbit mAb



Human lung adenocarcinoma was stained with anti-Cytokeratin 7 (CK7) (ABT25R) rabbit mAb

