



# RAD Rabbit mAb

<b>Catalog No</b>	YP-rAb-18216
<b>Isotype</b>	IgG
<b>Reactivity</b>	Human
<b>Applications</b>	WB,IHC,IF,IP,ELISA
<b>Gene Name</b>	RRAD
<b>Protein Name</b>	GTP-binding protein RAD
<b>Purification Process</b>	Protein A
<b>Specificity</b>	Endogenous
<b>Formulation</b>	PBS, 50% glycerol, 0.05% Proclin 300, 0.05%BSA
<b>Source</b>	Monoclonal, Rabbit,IgG
<b>Dilution</b>	IHC 1:200-1:1000; WB 1:2000-1:10000; IF 1:200-1:1000; ELISA 1:5000-1:20000; IP 1:50-1:200; Note: For IHC, we suggest antigen retrieval with TE buffer pH 9.0
<b>Concentration</b>	0.5 mg/ml
<b>Purity</b>	≥90%
<b>Storage Stability</b>	-15° C to -25° C/1 year(Do not lower than -25° C)
<b>Synonyms</b>	RRAD ; RAD ; GTP-binding protein RAD ; RAD1 ; Ras associated with diabetes
<b>Observed Band</b>	36kD
<b>Calculated Molecular Weight</b>	33kD
<b>Cell Pathway</b>	Cell membrane .
<b>Tissue Specificity</b>	Most abundantly expressed in the heart. Also found in the skeletal muscle and lung. Lesser amounts in placenta and kidney. Also detected in adipose tissue. Overexpressed in muscle of type II diabetic humans.
<b>Function</b>	similarity:Belongs to the small GTPase superfamily. RGK family.,subunit:Interacts with calmodulin preferentially to the inactive, GDP-form. Binds CAMKII which is capable of phosphorylating RAD in vitro.,tissue specificity:Skeletal and cardiac muscle, and lung. Lesser amounts in placenta and kidney. Also detected in adipose tissue. Overexpressed in muscle of type II diabetic humans.,
<b>Background</b>	similarity:Belongs to the small GTPase superfamily. RGK family.,subunit:Interacts with calmodulin preferentially to the inactive, GDP-form. Binds CAMKII which is capable of phosphorylating RAD in vitro.,tissue specificity:Skeletal and cardiac muscle, and lung. Lesser amounts in placenta and kidney. Also detected in adipose tissue. Overexpressed in muscle of type II diabetic humans.,



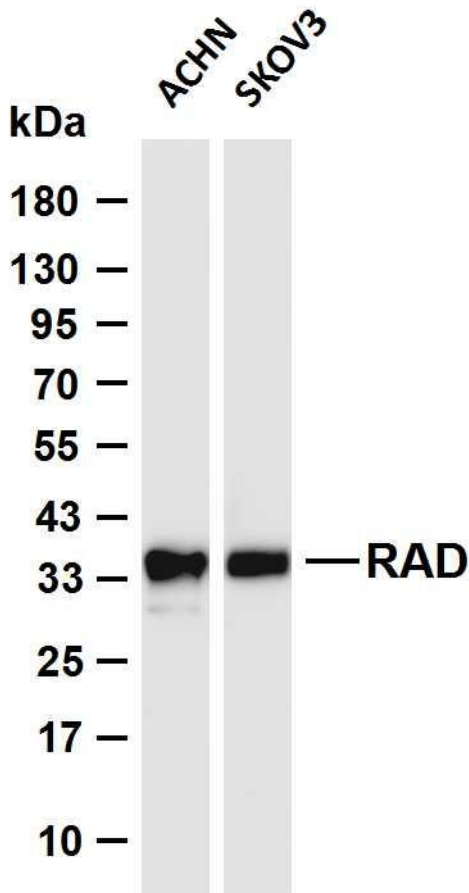


matters needing attention

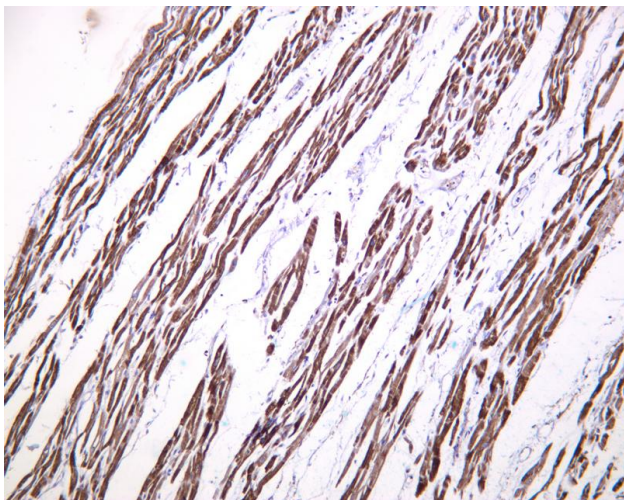
Avoid repeated freezing and thawing!

Usage suggestions

This product can be used in immunological reaction related experiments. For more information, please consult technical personnel.



Various whole cell lysates were separated by 4-20% SDS-PAGE, and the membrane was blotted with anti-RAD antibody. The HRP-conjugated Goat anti-Rabbit IgG (H + L) antibody was used to detect the antibody. Lane 1: ACHN Lane 2: SKOV3 Predicted band size: 33kDa Observed band size: 36kDa



Human muscle was stained with anti-RAD Rabbit antibody

杭州臻优品生物科技有限公司

热销产品:

蛋白、一抗、抗体对、ELISA试剂盒、生化试剂盒  
CCK8试剂盒、QPCR检测试剂盒

检测服务:

ELISA检测及定制服务 | 生化检测 | PCR、QPCR检测 | WB检测  
ICO-IP检测 | 切片 | 染色 | 免疫组化 | 免疫荧光 | 透射电镜全套  
| 宏基因组、转录组、基因组、蛋白组、代谢组测序



关注官网



关注客服