



Pan-TEF Rabbit mAb

Catalog No	YP-rAb-18213
Isotype	IgG
Reactivity	Human,Mouse,Rat
Applications	WB,IHC,IF,IP,ELISA
Gene Name	TEAD1/2/3/4
Protein Name	Transcriptional enhancer factor TEF-1/3/4/5
Purification Process	Protein A
Specificity	Endogenous
Formulation	PBS, 50% glycerol, 0.05% Proclin 300, 0.05%BSA
Source	Monoclonal, Rabbit,IgG
Dilution	IHC 1:200-1:1000; WB 1:10000-1:50000; IF 1:200-1:1000; ELISA 1:5000-1:20000; IP 1:50-1:200; Note: For IHC, we suggest antigen retrieval with TE buffer pH 9.0
Concentration	0.5 mg/ml
Purity	≥90%
Storage Stability	-15° C to -25° C/1 year(Do not lower than -25° C)
Synonyms	TEAD2 ; TEF4 ; Transcriptional enhancer factor TEF-4 ; TEA domain family member 2 ; TEAD-2 ; TEAD1 ; TCF13 ; TEF1 ; Transcriptional enhancer factor TEF-1 ; NTEF-1 ; Protein GT-IIC ; TEA domain family member 1 ; TEAD-1 ; Transcription factor 13 ; TCF-13 ; TEAD3 ; TEAD5 ; TEF5 ; Transcriptional enhancer factor TEF-5 ; DTEF-1 ; TEA domain family member 3 ; TEAD-3 ; TEA domain family member 4 ; TEAD-4 ; Transcription factor 13-like 1 ; Transcription factor RTEF-1 ;
Observed Band	56kD
Calculated Molecular Weight	48kD
Cell Pathway	Nucleus.
Tissue Specificity	Brain, Eye, Skin, Testis,
Function	Putative transcription factor that binds to the SPH and GT-IIC "enhansons" (5'-GTGGAATGT-3'). May be involved in the gene regulation of neural development. Binds to the M-CAT motif.,similarity:Contains 1 TEA DNA-binding domain.,





Background

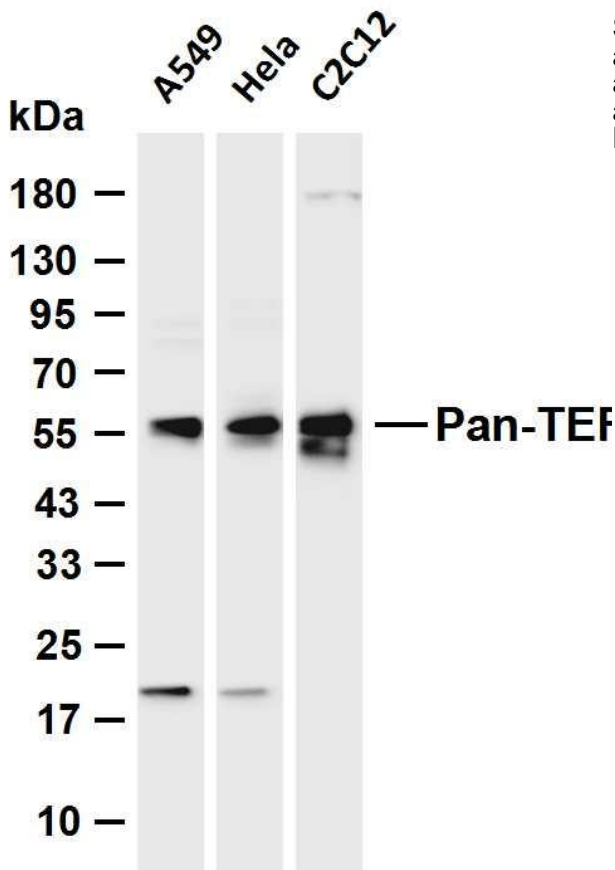
function: Putative transcription factor that binds to the SPH and GT-IIC "enhancers" (5'-GTGGAATGT-3'). May be involved in the gene regulation of neural development. Binds to the M-CAT motif., similarity: Contains 1 TEA DNA-binding domain.,

matters needing attention

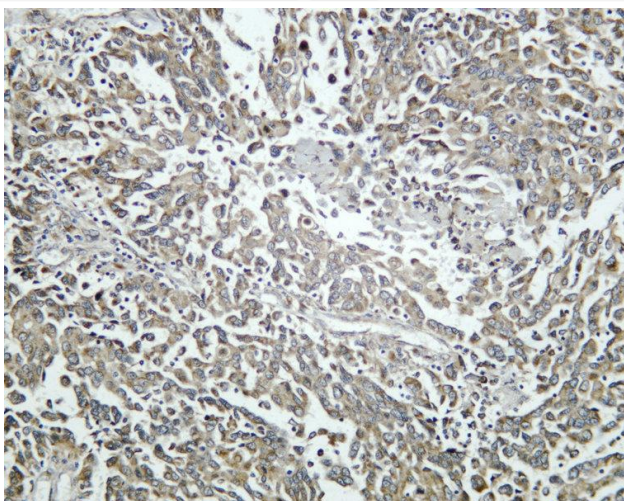
Avoid repeated freezing and thawing!

Usage suggestions

This product can be used in immunological reaction related experiments. For more information, please consult technical personnel.



Various whole cell lysates were separated by 4-20% SDS-PAGE, and the membrane was blotted with anti-Pan-TEF antibody. The HRP-conjugated Goat anti-Rabbit IgG (H + L) antibody was used to detect the antibody. Lane 1: A549 Lane 2: HeLa Lane 3: C2C12 Predicted band size: 48kDa Observed band size: 56kDa



Human malignant mesothelioma was stained with anti-Pan-TEF Rabbit antibody

