



GDF-15 Rabbit mAb

Catalog No	YP-rAb-18211
Isotype	IgG
Reactivity	Human
Applications	WB,IHC,IF,IP,ELISA
Gene Name	GDF15
Protein Name	Growth/differentiation factor 15
Purification Process	Protein A
Specificity	Endogenous
Formulation	PBS, 50% glycerol, 0.05% Proclin 300, 0.05%BSA
Source	Monoclonal, Rabbit,IgG
Dilution	IHC 1:200-1:500; WB 1:500-1:2000; IF 1:200-1:1000; ELISA 1:5000-1:20000; IP 1:50-1:200; Note: For IHC, we suggest antigen retrieval with TE buffer pH 9.0
Concentration	0.5 mg/ml
Purity	≥90%
Storage Stability	-15° C to -25° C/1 year(Do not lower than -25° C)
Synonyms	GDF15 ; MIC1 ; PDF ; PLAB ; PTGFB ; Growth/differentiation factor 15 ; GDF-15 ; Macrophage inhibitory cytokine 1 ; MIC-1 ; NSAID-activated gene 1 protein ; NAG-1 ; NSAID-regulated gene 1 protein ; NRG-1 ; Placental TGF-beta ; Placental bone morphogenetic
Observed Band	35kD(pro GDF15),13kD(mature GDF15)
Calculated Molecular Weight	34kD
Cell Pathway	Secreted .
Tissue Specificity	Highly expressed in placenta, with lower levels in prostate and colon and some expression in kidney (PubMed:9348093). Detected in plasma (at protein level) (PubMed:28572090, PubMed:29046435).
Function	similarity:Belongs to the TGF-beta family.,subunit:Homodimer; disulfide-linked.,tissue specificity:Highly expressed in placenta, with lower levels in prostate and colon and some expression in kidney.,
Background	growth differentiation factor 15(GDF15) Homo sapiens This gene encodes a secreted ligand of the TGF-beta (transforming growth factor-beta) superfamily of proteins. Ligands of this family bind various TGF-beta receptors leading to recruitment and activation of SMAD family transcription factors that regulate gene expression. The encoded preproprotein is proteolytically processed to generate

杭州臻优品生物科技有限公司

热销产品:

蛋白、一抗、抗体对、ELISA试剂盒、生化试剂盒
CCK8试剂盒、QPCR检测试剂盒

检测服务:

ELISA检测及定制服务 | 生化检测 | PCR、QPCR检测 | WB检测
ICO-IP检测 | 切片 | 染色 | 免疫组化 | 免疫荧光 | 透射电镜全套
| 宏基因组、转录组、基因组、蛋白组、代谢组测序



关注官网



关注客服



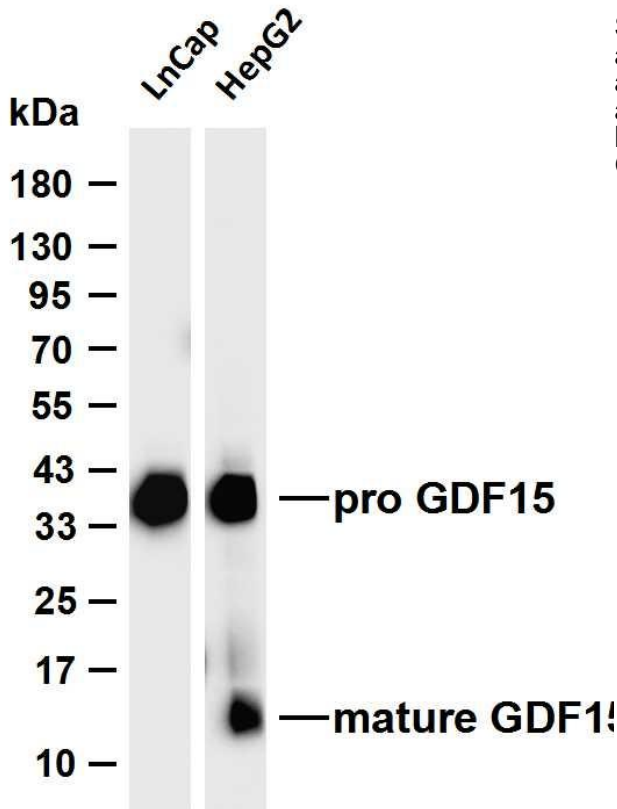
each subunit of the disulfide-linked homodimer. The protein is expressed in a broad range of cell types, acts as a pleiotropic cytokine and is involved in the stress response program of cells after cellular injury. Increased protein levels are associated with disease states such as tissue hypoxia, inflammation, acute injury and oxidative stress. [provided by RefSeq, Aug 2016],

matters needing attention

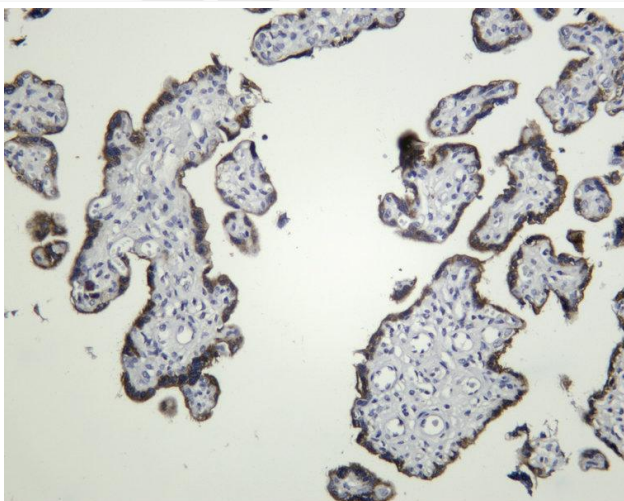
Avoid repeated freezing and thawing!

Usage suggestions

This product can be used in immunological reaction related experiments. For more information, please consult technical personnel.



Various whole cell lysates were separated by 4-20% SDS-PAGE, and the membrane was blotted with anti-GDF-15 antibody. The HRP-conjugated Goat anti-Rabbit IgG (H + L) antibody was used to detect the antibody. Lane 1: LnCap Lane 2: HepG2 Predicted band size: 34kDa Observed band size: 35(pro GDF15), 13(mature GDF15)kDa



Human placenta was stained with anti-GDF-15 Rabbit antibody

