



# Homer-1 Rabbit mAb

<b>Catalog No</b>	YP-rAb-18206
<b>Isotype</b>	IgG
<b>Reactivity</b>	Human,Mouse,Rat
<b>Applications</b>	WB,IHC,IF,IP,ELISA
<b>Gene Name</b>	HOMER1 SYN47
<b>Protein Name</b>	Homer protein homolog 1 (Homer-1)
<b>Purification Process</b>	Protein A
<b>Specificity</b>	Endogenous
<b>Formulation</b>	PBS, 50% glycerol, 0.05% Proclin 300, 0.05%BSA
<b>Source</b>	Monoclonal, Rabbit,IgG
<b>Dilution</b>	IHC 1:200-1:1000; WB 1:2000-1:10000; IF 1:200-1:1000; ELISA 1:5000-1:20000; IP 1:50-1:200; Note: For IHC, we suggest antigen retrieval with TE buffer pH 9.0
<b>Concentration</b>	0.5 mg/ml
<b>Purity</b>	≥90%
<b>Storage Stability</b>	-15° C to -25° C/1 year(Do not lower than -25° C)
<b>Synonyms</b>	
<b>Observed Band</b>	46kD
<b>Calculated Molecular Weight</b>	40kD
<b>Cell Pathway</b>	Cytoplasm . Cell junction, synapse, postsynaptic density . Cell junction, synapse . Cell projection, dendritic spine . Isoform 1 inhibits surface expression of GRM5 causing it to be retained in the endoplasmic reticulum. .
<b>Tissue Specificity</b>	Brain,Frontal cortex,Pancreas,Stomach mucosa,Synovial cell,
<b>Function</b>	Domain:The WH1 domain interacts with the PPXXF motif in GRM1, GRM5, RYR1, RYR2, ITPR1, SHANK 1 and SHANK3.,Function:Postsynaptic density scaffolding protein. Binds and cross-links cytoplasmic regions of GRM1, GRM5, ITPR1, DNM3, RYR1, RYR2, SHANK1 and SHANK3. By physically linking GRM1 and GRM5 with ER-associated ITPR1 receptors, it aids the coupling of surface receptors to intracellular calcium release. May also couple GRM1 to PI3 kinase through its interaction with AGAP2. Isoform 1 regulates the trafficking and surface expression of GRM5. Isoform 3 acts as a natural dominant negative, in dynamic competition with constitutively expressed isoform 1 to regulate synaptic metabotropic glutamate function. Isoform 3, may be involved in the structural changes that occur at synapses during long-lasting neuronal plasticity and development.,similarity:Belongs to the Homer family.,similarity:Contains 1 WH1





domain.,subcellular location:Postsynaptic density of neuronal cells. Isoform 1 inhibits surface expression of GRM5 causing it to be retained in the endoplasmic reticulum.,subunit:Interacts with IFT57 (By similarity). Isoform 1 encodes a coiled-coil structure that mediates homo- and heteromultimerization.,

### Background

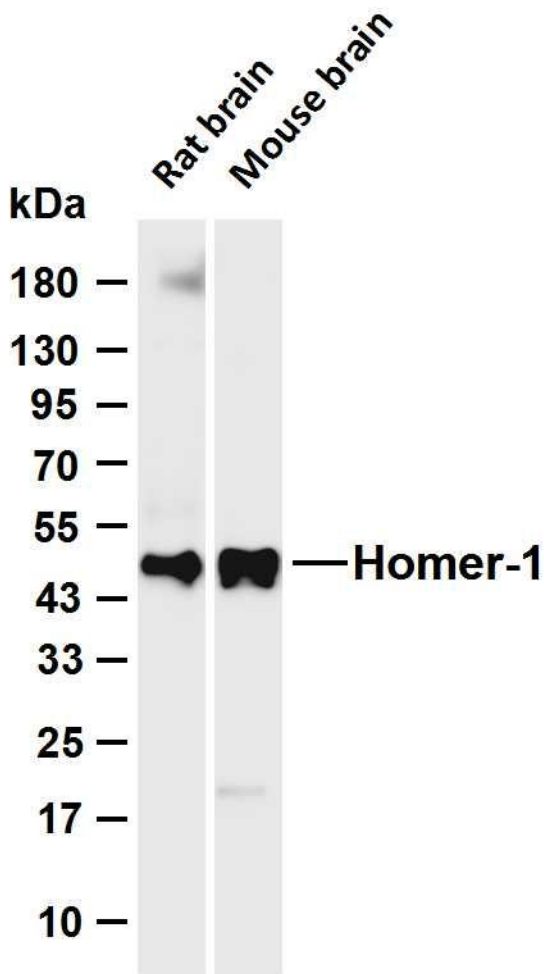
This gene encodes a member of the homer family of dendritic proteins. Members of this family regulate group 1 metabotropic glutamate receptor function. [provided by RefSeq, Jul 2008],

### matters needing attention

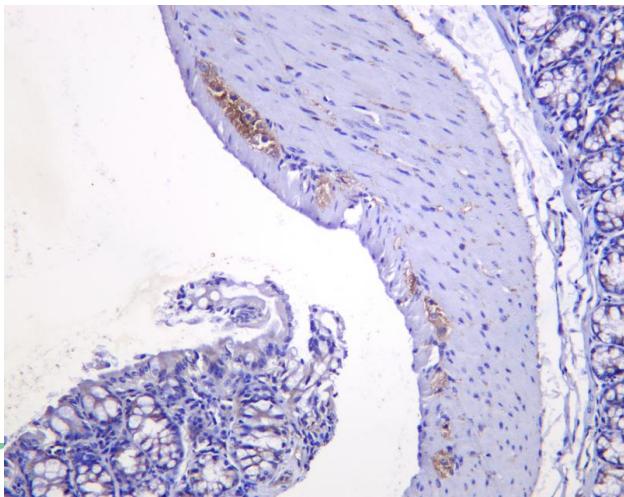
Avoid repeated freezing and thawing!

### Usage suggestions

This product can be used in immunological reaction related experiments. For more information, please consult technical personnel.



Various whole cell lysates were separated by 4-20% SDS-PAGE, and the membrane was blotted with anti-Homer-1 antibody. The HRP-conjugated Goat anti-Rabbit IgG (H + L) antibody was used to detect the antibody. Lane 1: Rat brain Lane 2: Mouse brain Predicted band size: 40kDa Observed band size: 46kDa



Mouse colon was stained with anti-Homer-1 Rabbit antibody

#### 热销产品:

蛋白、一抗、抗体对、ELISA试剂盒、生化试剂盒  
CCK8试剂盒、QPCR检测试剂盒

#### 检测服务:

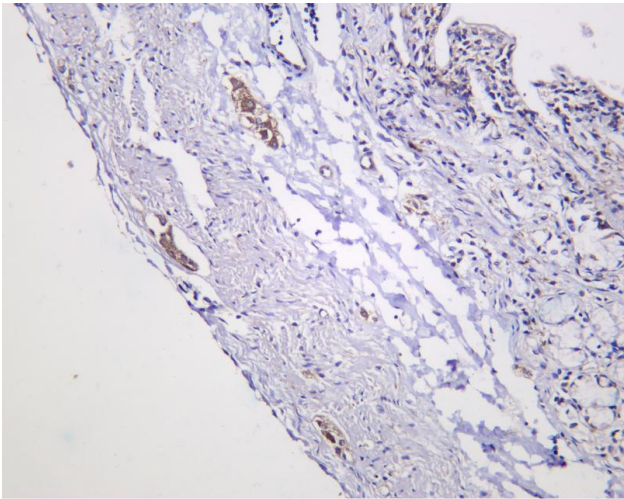
ELISA检测及定制服务 | 生化检测 | PCR、QPCR检测 | WB检测  
ICO-IP检测 | 切片 | 染色 | 免疫组化 | 免疫荧光 | 透射电镜全套  
| 宏基因组、转录组、基因组、蛋白组、代谢组测序



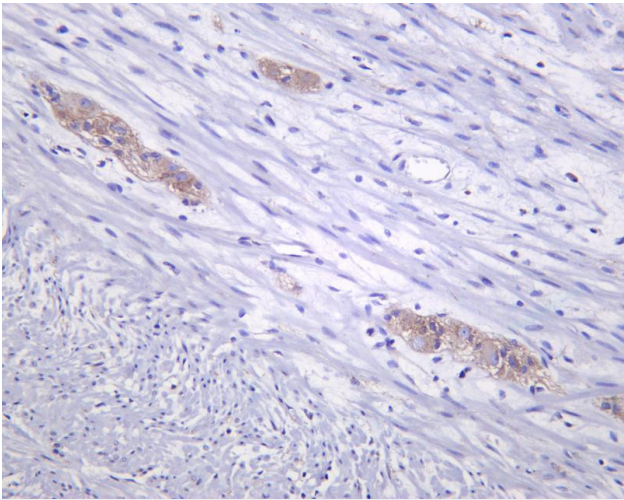
关注官网



关注客服



Rat colon was stained with anti-Homer-1 Rabbit antibody



Human appendix was stained with anti-Homer-1 Rabbit antibody

## 杭州臻优品生物科技有限公司

### 热销产品:

蛋白、一抗、抗体对、ELISA试剂盒、生化试剂盒  
CCK8试剂盒、QPCR检测试剂盒

### 检测服务:

ELISA检测及定制服务 | 生化检测 | PCR、QPCR检测 | WB检测  
ICO-IP检测 | 切片 | 染色 | 免疫组化 | 免疫荧光 | 透射电镜全套  
| 宏基因组、转录组、基因组、蛋白组、代谢组测序



关注官网



关注客服