



Integrin α E Rabbit mAb

| | |
|------------------------------------|---|
| Catalog No | YP-rAb-18205 |
| Isotype | IgG |
| Reactivity | Human,Mouse,Rat |
| Applications | WB,IHC,IF,ELISA |
| Gene Name | ITGAE |
| Protein Name | Integrin alpha-E (HML-1 antigen) (Integrin alpha-IEL) (Mucosal lymphocyte 1 antigen) (CD antigen CD103) [Cleaved into: Integrin alpha-E light chain; Integrin alpha-E heavy chain] |
| Purification Process | Protein A |
| Specificity | Endogenous |
| Formulation | PBS, 50% glycerol, 0.05% Proclin 300, 0.05%BSA |
| Source | Monoclonal, Rabbit,IgG |
| Dilution | IHC 1:200-1:1000; WB 1:2000-1:10000; IF 1:200-1:1000; ELISA 1:5000-1:20000; Note: For IHC, we suggest antigen retrieval with TE buffer pH 9.0 |
| Concentration | 0.5 mg/ml |
| Purity | $\geq 90\%$ |
| Storage Stability | -15° C to -25° C/1 year(Do not lower than -25° C) |
| Synonyms | Integrin alpha-E ; HML-1 antigen ; Integrin alpha-IEL ; Mucosal lymphocyte 1 antigen ; CD antigen CD103 ; [Cleaved into: Integrin alpha-E light chain ; Integrin alpha-E heavy chain] |
| Observed Band | 150kD |
| Calculated Molecular Weight | 130kD |
| Cell Pathway | Membrane; Single-pass type I membrane protein. |
| Tissue Specificity | Expressed on a subclass of T-lymphocytes known as intra-epithelial lymphocytes which are located between mucosal epithelial cells. |
| Function | Domain:The integrin I-domain (insert) is a VWFA domain. Integrins with I-domains do not undergo protease cleavage.,Function:Integrin alpha-E/beta-7 is a receptor for E-cadherin. It mediates adhesion of intra-epithelial T-lymphocytes to epithelial cell monolayers.,induction:Integrin alpha-E/beta-7 is induced by TGFB1.,similarity:Belongs to the integrin alpha chain family.,similarity:Contains 1 VWFA domain.,similarity:Contains 5 FG-GAP repeats.,subunit:Heterodimer of an alpha and a beta subunit. The alpha subunit is composed of an heavy and a light chains linked by a disulfide bond. Alpha-E associates with beta-7.,tissue specificity:Expressed on a subclass of T-lymphocytes known as intra-epithelial |





lymphocytes which are located between mucosal epithelial cells.,

Background

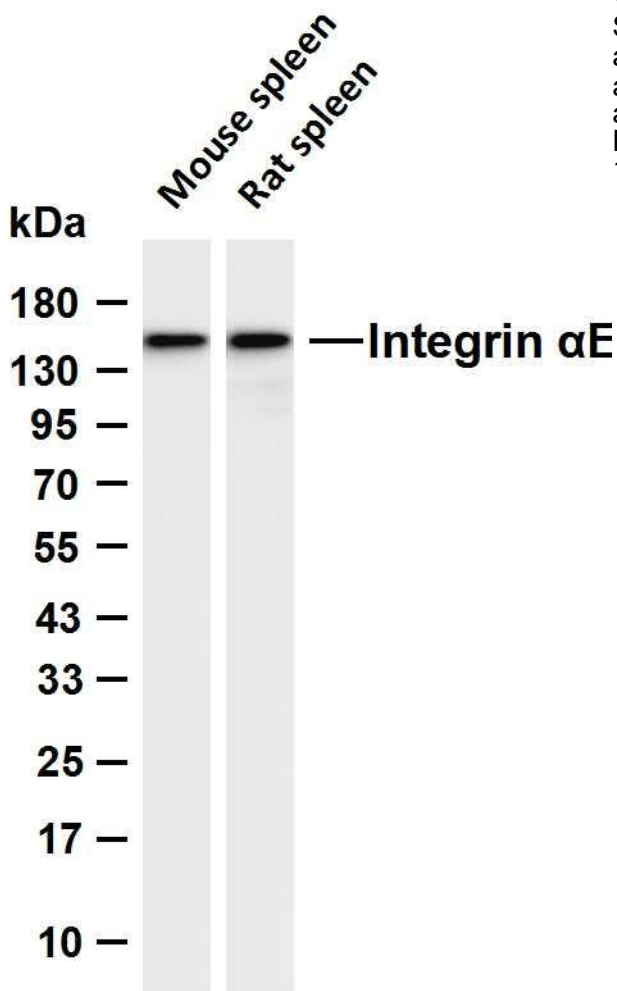
integrin subunit alpha E (ITGAE) Homo sapiens Integrins are heterodimeric integral membrane proteins composed of an alpha chain and a beta chain. This gene encodes an I-domain-containing alpha integrin that undergoes post-translational cleavage in the extracellular domain, yielding disulfide-linked heavy and light chains. In combination with the beta 7 integrin, this protein forms the E-cadherin binding integrin known as the human mucosal lymphocyte-1 antigen. This protein is preferentially expressed in human intestinal intraepithelial lymphocytes (IEL), and in addition to a role in adhesion, it may serve as an accessory molecule for IEL activation. [provided by RefSeq, Jul 2008],

matters needing attention

Avoid repeated freezing and thawing!

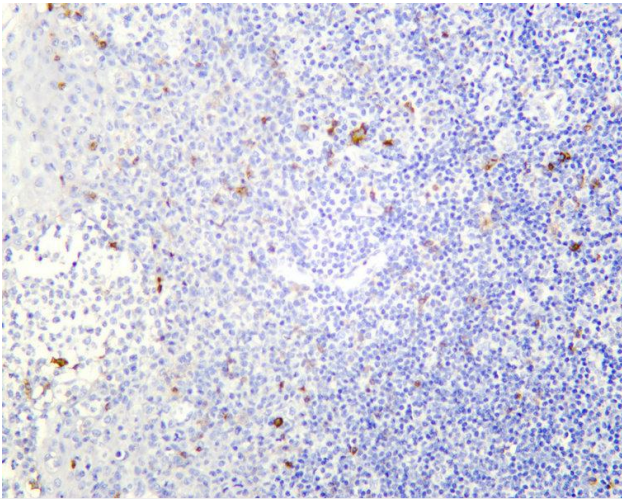
Usage suggestions

This product can be used in immunological reaction related experiments. For more information, please consult technical personnel.

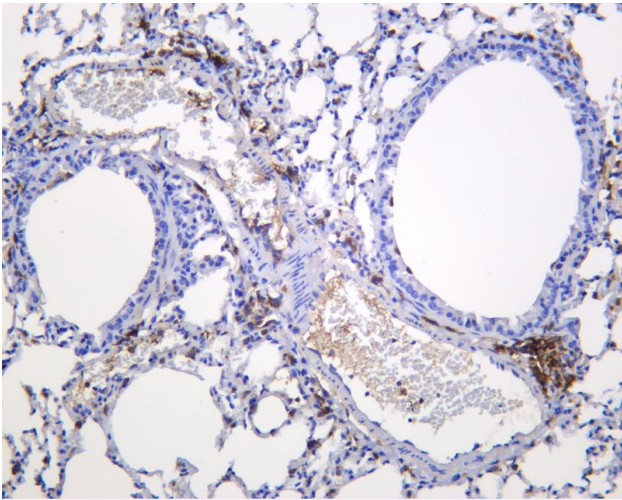


Various whole cell lysates were separated by 4-20% SDS-PAGE, and the membrane was blotted with anti-Integrin α E antibody. The HRP-conjugated Goat anti-Rabbit IgG (H + L) antibody was used to detect the antibody. Lane 1: Mouse spleen Lane 2: Rat spleen Predicted band size: 130kDa Observed band size: 150kDa

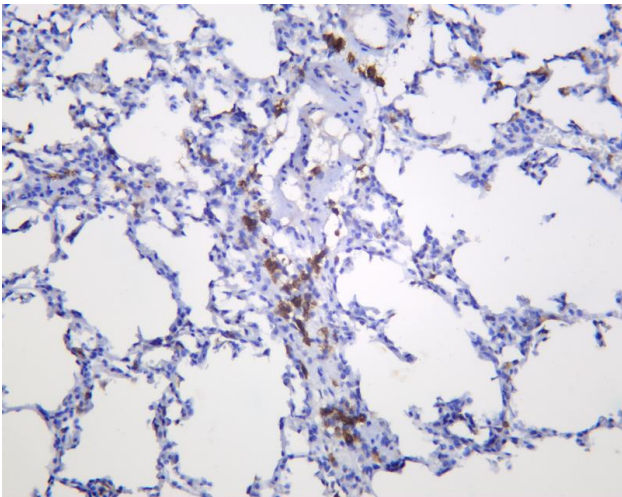




Human tonsil was stained with anti-Integrin α E Rabbit antibody



Mouse lung was stained with anti-Integrin α E Rabbit antibody



Rat lung was stained with anti-Integrin α E Rabbit antibody

