



NKp46 Rabbit mAb

Catalog No	YP-rAb-18203
Isotype	IgG
Reactivity	Human,Mouse,Rat
Applications	WB,IHC,IF,ELISA
Gene Name	NCR1
Protein Name	Natural cytotoxicity triggering receptor 1
Purification Process	Protein A
Specificity	Endogenous
Formulation	PBS, 50% glycerol, 0.05% Proclin 300, 0.05%BSA
Source	Monoclonal, Rabbit,IgG
Dilution	IHC 1:200-1:1000; WB 1:2000-1:10000; IF 1:200-1:1000; ELISA 1:5000-1:20000; Note: For IHC, we suggest antigen retrieval with TE buffer pH 9.0
Concentration	0.5 mg/ml
Purity	≥90%
Storage Stability	-15° C to -25° C/1 year(Do not lower than -25° C)
Synonyms	NCR1 ; LY94 ; Natural cytotoxicity triggering receptor 1 ; Lymphocyte antigen 94 homolog ; NK cell-activating receptor ; Natural killer cell p46-related protein ; NK-p46 ; NKp46 ; hNKp46 ; CD antigen CD335
Observed Band	50-60kD
Calculated Molecular Weight	34kD
Cell Pathway	Cell membrane ; Single-pass type I membrane protein .
Tissue Specificity	Selectively expressed by both resting and activated NK cells.
Function	Cytotoxicity-activating receptor that may contribute to the increased efficiency of activated natural killer (NK) cells to mediate tumor cell lysis.,PTM:N-glycosylated.,PTM:O-glycosylated.,similarity:Belongs to the natural cytotoxicity receptor (NCR) family.,similarity:Contains 2 Ig-like (immunoglobulin-like) domains.,subunit:Interacts with CD3Z and FCER1G.,tissue specificity:Selectively expressed by both resting and activated NK cells.,
Background	function:Cytotoxicity-activating receptor that may contribute to the increased efficiency of activated natural killer (NK) cells to mediate tumor cell lysis.,PTM:N-glycosylated.,PTM:O-glycosylated.,similarity:Belongs to the natural cytotoxicity receptor (NCR) family.,similarity:Contains 2 Ig-like





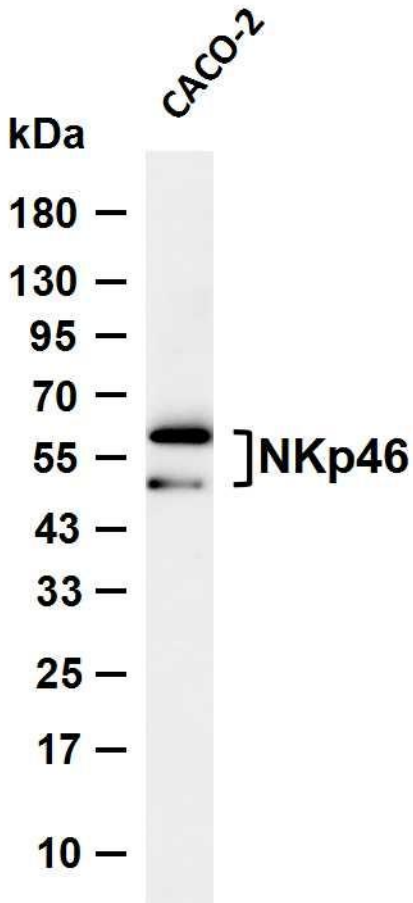
(immunoglobulin-like) domains.,subunit:Interacts with CD3Z and FCER1G.,tissue specificity:Selectively expressed by both resting and activated NK cells.,

matters needing attention

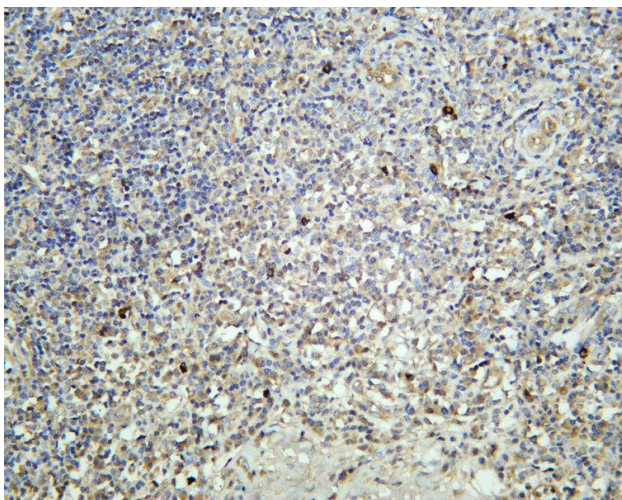
Avoid repeated freezing and thawing!

Usage suggestions

This product can be used in immunological reaction related experiments. For more information, please consult technical personnel.



Various whole cell lysates were separated by 4-20% SDS-PAGE, and the membrane was blotted with anti-NKp46 antibody. The HRP-conjugated Goat anti-Rabbit IgG (H + L) antibody was used to detect the antibody. Lane 1: CACO-2 Predicted band size: 34kDa Observed band size: 50-60kDa



Human tonsil was stained with anti-NKp46 Rabbit antibody

杭州臻优品生物科技有限公司

热销产品:

蛋白、一抗、抗体对、ELISA试剂盒、生化试剂盒
CCK8试剂盒、QPCR检测试剂盒

检测服务:

ELISA检测及定制服务 | 生化检测 | PCR、QPCR检测 | WB检测
ICO-IP检测 | 切片 | 染色 | 免疫组化 | 免疫荧光 | 透射电镜全套
| 宏基因组、转录组、基因组、蛋白组、代谢组测序



关注官网



关注客服