



# WAVE1 Rabbit mAb

<b>Catalog No</b>	YP-rAb-18202
<b>Isotype</b>	IgG
<b>Reactivity</b>	Human,Mouse,Rat
<b>Applications</b>	WB,IHC,IF,ELISA
<b>Gene Name</b>	WASF1
<b>Protein Name</b>	Wiskott-Aldrich syndrome protein family member 1
<b>Purification Process</b>	Protein A
<b>Specificity</b>	Endogenous
<b>Formulation</b>	PBS, 50% glycerol, 0.05% Proclin 300, 0.05%BSA
<b>Source</b>	Monoclonal, Rabbit,IgG
<b>Dilution</b>	IHC 1:200-1:1000; WB 1:2000-1:10000; IF 1:200-1:1000; ELISA 1:5000-1:20000; Note: For IHC, we suggest antigen retrieval with TE buffer pH 9.0
<b>Concentration</b>	0.5 mg/ml
<b>Purity</b>	≥90%
<b>Storage Stability</b>	-15° C to -25° C/1 year(Do not lower than -25° C)
<b>Synonyms</b>	WASF1 ; KIAA0269 ; SCAR1 ; WAVE1 ; Wiskott-Aldrich syndrome protein family member 1 ; WASP family protein member 1 ; Protein WAVE-1 ; Verprolin homology domain-containing protein 1
<b>Observed Band</b>	80kD
<b>Calculated Molecular Weight</b>	62kD
<b>Cell Pathway</b>	Cytoplasm, cytoskeleton . Cell junction, synapse . Cell junction, focal adhesion . Dot-like pattern in the cytoplasm. Concentrated in Rac-regulated membrane-ruffling areas (PubMed:9889097). Partial translocation to focal adhesion sites might be mediated by interaction with SORBS2 (PubMed:18559503). In neurons, colocalizes with activated NTRK2 after BDNF addition in endocytic sites through the association with TMEM108 (By similarity).
<b>Tissue Specificity</b>	Highly expressed in brain. Lowly expressed in testis, ovary, colon, kidney, pancreas, thymus, small intestine and peripheral blood.
<b>Function</b>	Domain: Binds the Arp2/3 complex through the C-terminal region and actin through verprolin homology (VPH) domain. Function: Downstream effector molecules involved in the transmission of signals from tyrosine kinase receptors and small GTPases to the actin cytoskeleton. similarity: Belongs to the SCAR/WAVE family. similarity: Contains 1 WH2 domain. subcellular location: Dot-like pattern in the cytoplasm. Concentrated in Rac-regulated





membrane-ruffling areas.,subunit:Component of the WAVE1 complex composed of ABI2, CYFIP2, C3orf10/HSPC300, NCKAP1 and WASF1/WAVE1. CYFIP2 binds to activated RAC1 which causes the complex to dissociate, releasing activated WASF1. The complex can also be activated by NCK1 (By similarity). Binds actin and the Arp2/3 complex. Interacts with BAIAP2.,tissue specificity:Highly expressed in brain. Lowly expressed in testis, ovary, colon, kidney, pancreas, thymus, small intestine and peripheral blood.,

### Background

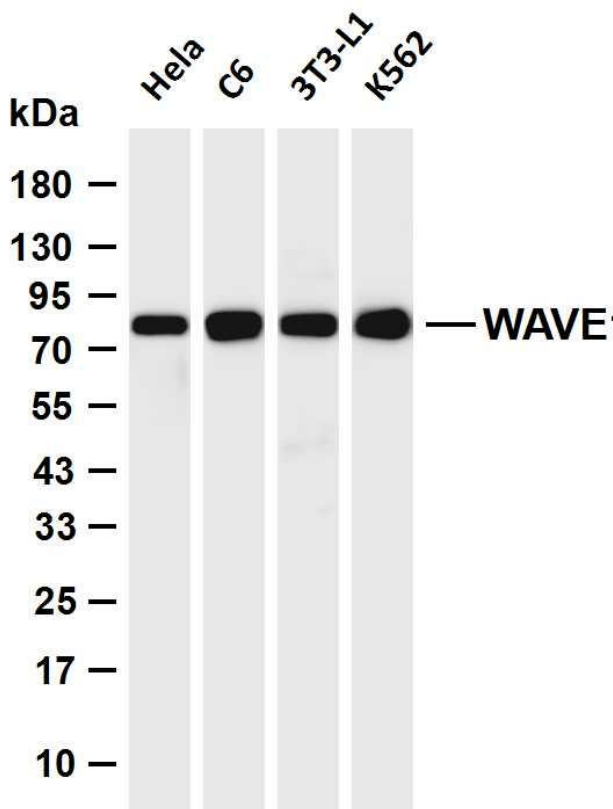
The protein encoded by this gene, a member of the Wiskott-Aldrich syndrome protein (WASP)-family, plays a critical role downstream of Rac, a Rho-family small GTPase, in regulating the actin cytoskeleton required for membrane ruffling. It has been shown to associate with an actin nucleation core Arp2/3 complex while enhancing actin polymerization in vitro. Wiskott-Aldrich syndrome is a disease of the immune system, likely due to defects in regulation of actin cytoskeleton. Multiple alternatively spliced transcript variants encoding the same protein have been found for this gene. [provided by RefSeq, Jul 2008],

### matters needing attention

Avoid repeated freezing and thawing!

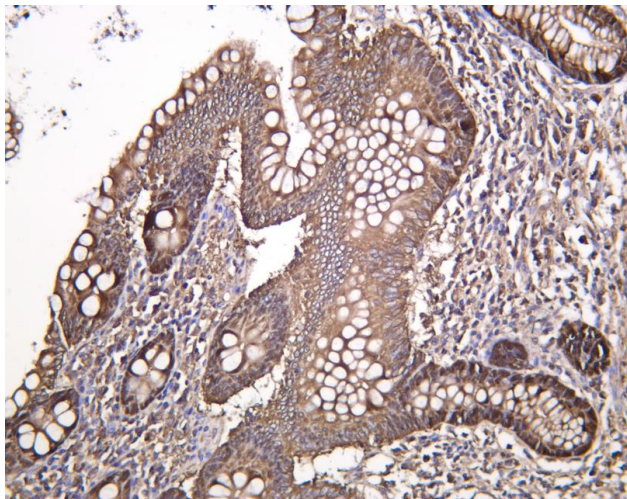
### Usage suggestions

This product can be used in immunological reaction related experiments. For more information, please consult technical personnel.



Various whole cell lysates were separated by 4-20% SDS-PAGE, and the membrane was blotted with anti-WAVE1 antibody. The HRP-conjugated Goat anti-Rabbit IgG (H + L) antibody was used to detect the antibody. Lane 1: HeLa Lane 2: C6 Lane 3: 3T3-L1 Lane 4: K562 Predicted band size: 62kDa Observed band size: 80kDa





Human appendix was stained with anti-WAVE1 Rabbit antibody

## 杭州臻优品生物科技有限公司

### 热销产品:

蛋白、一抗、抗体对、ELISA试剂盒、生化试剂盒  
CCK8试剂盒、QPCR检测试剂盒

### 检测服务:

ELISA检测及定制服务 | 生化检测 | PCR、QPCR检测 | WB检测  
ICO-IP检测 | 切片 | 染色 | 免疫组化 | 免疫荧光 | 透射电镜全套  
| 宏基因组、转录组、基因组、蛋白组、代谢组测序



关注官网



关注客服