



CCDC109A Rabbit mAb

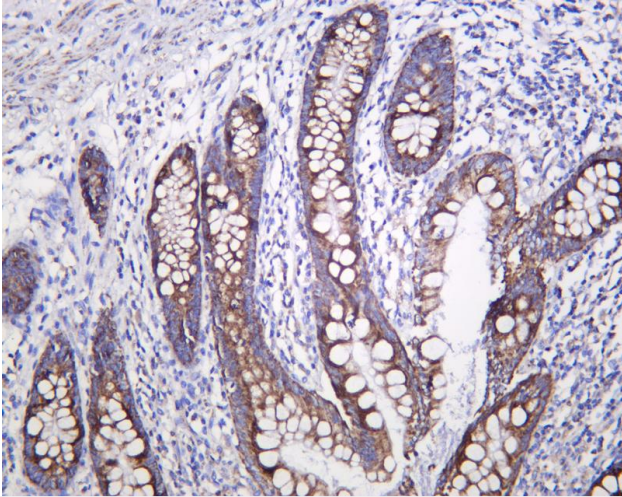
Catalog No	YP-rAb-18200
Isotype	IgG
Reactivity	Human,Mouse,Rat
Applications	WB,IHC,IF,IP,ELISA
Gene Name	MCU
Protein Name	Calcium uniporter protein mitochondrial
Purification Process	Protein A
Specificity	Endogenous
Formulation	PBS, 50% glycerol, 0.05% Proclin 300, 0.05%BSA
Source	Monoclonal, Rabbit,IgG
Dilution	IHC 1:200-1:1000; WB 1:2000-1:10000; IF 1:200-1:1000; ELISA 1:5000-1:20000; IP 1:50-1:200; Note: For IHC, we suggest antigen retrieval with TE buffer pH 9.0
Concentration	0.5 mg/ml
Purity	≥90%
Storage Stability	-15° C to -25° C/1 year(Do not lower than -25° C)
Synonyms	MCU ; C10orf42 ; CCDC109A ; Calcium uniporter protein ; mitochondrial ; Coiled-coil domain-containing protein 109A
Observed Band	33kD
Calculated Molecular Weight	40kD
Cell Pathway	Mitochondrion inner membrane ; Multi-pass membrane protein .
Tissue Specificity	Eye,Testis,
Function	similarity:Belongs to the CCDC109 family.,
Background	This gene encodes a calcium transporter that localizes to the mitochondrial inner membrane. The encoded protein interacts with mitochondrial calcium uptake 1. Alternative splicing results in multiple transcript variants. [provided by RefSeq, Jul 2012],
matters needing attention	Avoid repeated freezing and thawing!



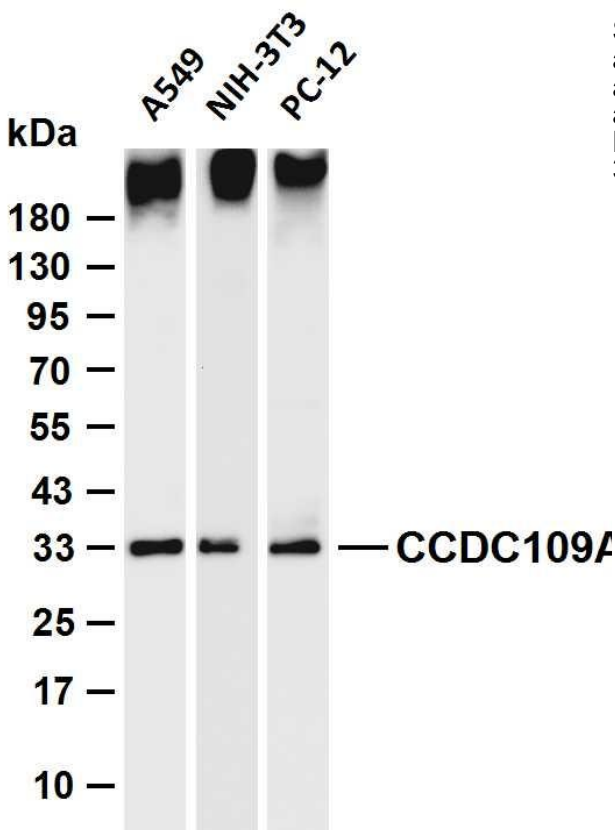


Usage suggestions

This product can be used in immunological reaction related experiments. For more information, please consult technical personnel.



Human appendix was stained with anti-CCDC109A Rabbit antibody



Various whole cell lysates were separated by 4-20% SDS-PAGE, and the membrane was blotted with anti-CCDC109A antibody. The HRP-conjugated Goat anti-Rabbit IgG (H + L) antibody was used to detect the antibody. Lane 1: A549 Lane 2: NIH-3T3 Lane 3: PC-12 Predicted band size: 40kDa Observed band size: 33kDa

杭州臻优品生物科技有限公司

热销产品:

蛋白、一抗、抗体对、ELISA试剂盒、生化试剂盒
CCK8试剂盒、QPCR检测试剂盒

检测服务:

ELISA检测及定制服务 | 生化检测 | PCR、QPCR检测 | WB检测
ICO-IP检测 | 切片 | 染色 | 免疫组化 | 免疫荧光 | 透射电镜全套
| 宏基因组、转录组、基因组、蛋白组、代谢组测序



关注官网



关注客服