



# CD34 (ABT218R) Rabbit mAb (Ready to Use)

<b>Catalog No</b>	YP-rAb-18186
<b>Isotype</b>	IgG
<b>Reactivity</b>	Human
<b>Applications</b>	IHC
<b>Gene Name</b>	CD34
<b>Protein Name</b>	Hematopoietic progenitor cell antigen CD34 (CD antigen CD34)
<b>Purification Process</b>	Protein A
<b>Specificity</b>	This antibody detects endogenous levels of CD34
<b>Formulation</b>	The prediluted ready-to-use antibody is diluted in phosphate buffer saline containing stabilizing protein and 0.05% Proclin 300
<b>Source</b>	Monoclonal, Rabbit,IgG
<b>Dilution</b>	Ready to use for IHC Note: For IHC, we suggest antigen retrieval with TE buffer pH 9.0
<b>Concentration</b>	0.5 mg/ml
<b>Purity</b>	≥90%
<b>Storage Stability</b>	2° C to 8° C/1 year,Ship by ice bag
<b>Synonyms</b>	Hematopoietic progenitor cell antigen CD34 ; CD34
<b>Observed Band</b>	
<b>Calculated Molecular Weight</b>	
<b>Cell Pathway</b>	Membrane; Single-pass type I membrane protein.
<b>Tissue Specificity</b>	Selectively expressed on hematopoietic progenitor cells and the small vessel endothelium of a variety of tissues.
<b>Function</b>	Alternative products:Both isoforms are expressed on the cell surface. CD34-T/CD34-F ratio increases with cell differentiation,developmental stage:On early hematopoietic progenitor cells.,Disease:Abnormal CD34 expression in leukemogenesis.,Function:Possible adhesion molecule with a role in early hematopoiesis by mediating the attachment of stem cells to the bone marrow extracellular matrix or directly to stromal cells. Could act as a scaffold for the attachment of lineage specific glycans, allowing stem cells to bind to lectins expressed by stromal cells or other marrow components. Presents carbohydrate ligands to selectins.,online information:CD34 entry,PTM:Highly glycosylated.,PTM:Phosphorylated on serine residues by PKC.,similarity:Belongs to the CD34 family.,tissue specificity:Selectively expressed on hematopoietic progenitor cells and the small vessel endothelium of a variety of tissues.,





### Background

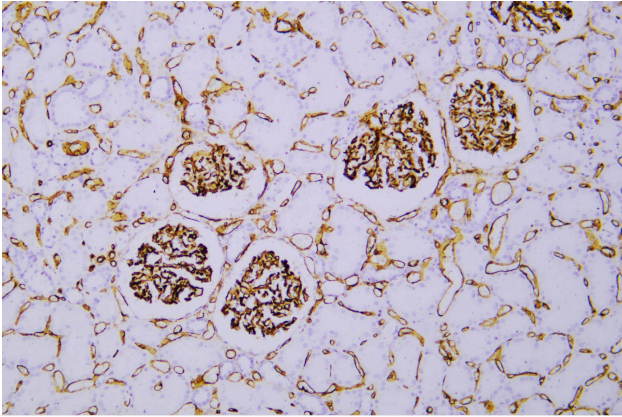
The protein encoded by this gene may play a role in the attachment of stem cells to the bone marrow extracellular matrix or to stromal cells. This single-pass membrane protein is highly glycosylated and phosphorylated by protein kinase C. Two transcript variants encoding different isoforms have been found for this gene. [provided by RefSeq, Aug 2011],

### matters needing attention

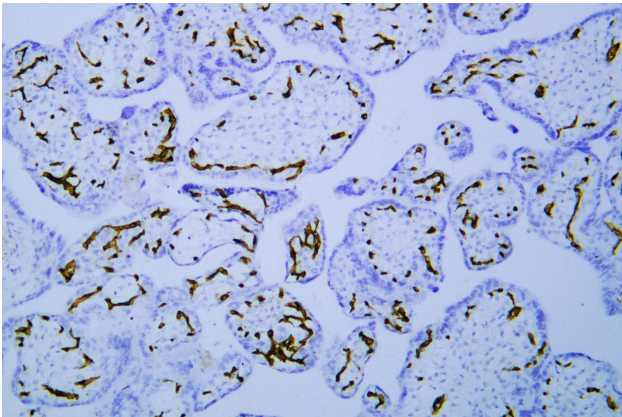
Avoid repeated freezing and thawing!

### Usage suggestions

This product can be used in immunological reaction related experiments. For more information, please consult technical personnel.



Human kidney was stained with anti-CD34 (ABT218R) rabbit mAb



Human placenta was stained with anti-CD34 (ABT218R) rabbit mAb

