



CD3, CD3E Rabbit mAb (Ready to Use)

Catalog No	YP-rAb-18185
Isotype	IgG
Reactivity	Human
Applications	IHC
Gene Name	CD3E
Protein Name	CD3, CD3E
Purification Process	Protein A
Specificity	This antibody detects endogenous levels of CD3E
Formulation	The prediluted ready-to-use antibody is diluted in phosphate buffer saline containing stabilizing protein and 0.05% Proclin 300
Source	Monoclonal, Rabbit,IgG
Dilution	Ready to use for IHC Note: For IHC, we suggest antigen retrieval with TE buffer pH 9.0
Concentration	0.5 mg/ml
Purity	≥90%
Storage Stability	2° C to 8° C/1 year,Ship by ice bag
Synonyms	4930549J05Rik ; A430104F18Rik ; AW552088 ; Cd247 ; CD247 antigen ; CD247 antigen, zeta subunit ; CD247 molecule ; CD3 ; CD3 antigen, delta subunit ; CD3 delta ; CD3 epsilon ; CD3 eta ; CD3 gamma ; CD3 molecule delta polypeptide ; CD3 molecule, epsilon polypeptide ; CD3 molecule, gamma polypeptide ; CD3 zeta ; CD3-DELTA ; CD3d ; CD3D antigen delta polypeptide ; CD3d antigen, delta polypeptide ; TiT3 complex ; CD3d molecule delta ; CD3d molecule delta CD3 TCR complex ; CD3d molecule, delta ; CD3-TCR complex ; CD3D_HUMAN ; CD3E ; CD3e antigen ; CD3E antigen epsilon polypeptide ; CD3e antigen, epsilon polypeptide ; TiT3 complex ; CD3e molecule epsilon ; CD3e molecule epsilon CD3 TCR complex ; CD3e molecule, epsilon ; CD3-TCR complex ; CD3epsilon ; CD3G ; CD3g antigen ; CD3G antigen gamma polypeptide ; CD3g antigen, gamma polypeptide ; TiT3 complex ; CD3g molecule gamma ; CD3g molecule gamma CD3 TCR complex ; CD3g molecule, gamma ; CD3-TCR complex ; CD3H ; CD3Q ; CD3Z ; CD3zeta ; Ctg3 ; FLJ17620 ; FLJ17664 ; FLJ18683 ; FLJ79544 ; FLJ94613 ; IMD19 ; Leu-4 ; MGC138597 ; OKT3, delta chain ; OTTHUMP00000032544 ; T cell receptor ; T cell receptor T3 delta chain ; T cell receptor T3 gamma chain ; T cell receptor T3 zeta chain ; T cell receptor zeta





chain ; T cell surface antigen T3/Leu 4 epsilon chain ; T cell surface glycoprotein CD3 ; T cell surface glycoprotein CD3 delta chain ; T cell surface glycoprotein CD3 epsilon chain ; T cell surface glycoprotein CD3 gamma chain ; T cell surface glycoprotein CD3 zeta chain ; T-cell antigen receptor complex, delta subunit of T3 ; T-cell antigen receptor complex, epsilon subunit of T3 ; T-cell antigen receptor complex, gamma subunit of T3 ; T-cell antigen receptor complex, zeta subunit of CD3 ; T-cell receptor T3 delta chain ; T-cell receptor T3 gamma chain ; T-cell surface antigen T3/Leu-4 epsilon chain ; T-cell surface glycoprotein CD3 delta chain ; T-cell surface glycoprotein CD3 epsilon chain ; T-cell surface glycoprotein CD3 gamma chain ; T3 ; T3d ; T3e ; T3g ; T3z ; TCRE ; TCRk ; Tcrz ; TCRzeta

Observed Band

Calculated Molecular Weight

Cell Pathway Membranous

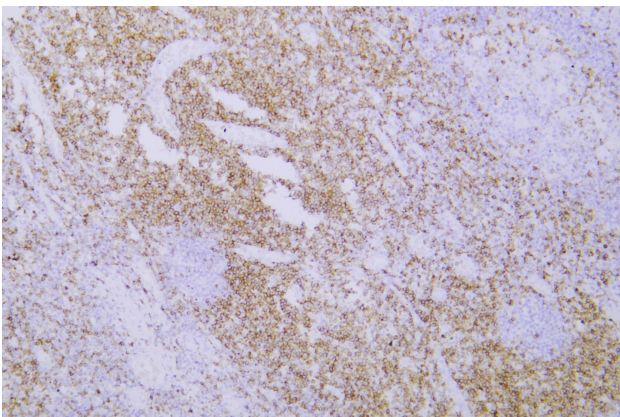
Tissue Specificity Membranous

Function The CD3 complex mediates signal transduction.,online information:CD3E mutation db,similarity:Contains 1 Ig-like (immunoglobulin-like) domain.,similarity:Contains 1 ITAM domain.,subunit:The TCR/CD3 complex of T-lymphocytes consists of either a TCR alpha/beta or TCR gamma/delta heterodimer coexpressed at the cell surface with the invariant subunits of CD3 labeled gamma, delta, epsilon, zeta, and eta.,

Background The protein encoded by this gene is the CD3-epsilon polypeptide, which together with CD3-gamma, -delta and -zeta, and the T-cell receptor alpha/beta and gamma/delta heterodimers, forms the T-cell receptor-CD3 complex. This complex plays an important role in coupling antigen recognition to several intracellular signal-transduction pathways. The genes encoding the epsilon, gamma and delta polypeptides are located in the same cluster on chromosome 11. The epsilon polypeptide plays an essential role in T-cell development. Defects in this gene cause immunodeficiency. This gene has also been linked to a susceptibility to type I diabetes in women. [provided by RefSeq, Jul 2008],

matters needing attention Avoid repeated freezing and thawing!

Usage suggestions This product can be used in immunological reaction related experiments. For more information, please consult technical personnel.



Human tonsil was stained with anti-CD3, CD3E rabbit mAb

