



CD20 (ABT20R) Rabbit mAb (Ready to Use)

Catalog No	YP-rAb-18184
Isotype	IgG
Reactivity	Human
Applications	IHC
Gene Name	MS4A1 CD20
Protein Name	CD20
Purification Process	Protein A
Specificity	This antibody detects endogenous levels of CD20
Formulation	The prediluted ready-to-use antibody is diluted in phosphate buffer saline containing stabilizing protein and 0.05% Proclin 300
Source	Monoclonal, Rabbit,IgG
Dilution	Ready to use for IHC Note: For IHC, we suggest antigen retrieval with TE buffer pH 9.0
Concentration	0.5 mg/ml
Purity	≥90%
Storage Stability	2° C to 8° C/1 year,Ship by ice bag
Synonyms	B-lymphocyte antigen CD20 ; B-lymphocyte surface antigen B1 ; Bp35 ; Leukocyte surface antigen Leu-16 ; Membrane-spanning 4-domains subfamily A member 1 ; CD antigen CD20 ;
Observed Band	
Calculated Molecular Weight	
Cell Pathway	Membranous
Tissue Specificity	Expressed on B-cells.
Function	Caution:Epitope 1, mapped in PubMed:16785532, is predicted to be buried in the membrane. Its accessibility to the extracellular space, and thus to antibody recognition, is not explained.,Function:This protein may be involved in the regulation of B-cell activation and proliferation.,online information:CD20 entry,pharmaceutical:Monoclonal antibodies(mAb) against CD20 are used to treat B-cell non-Hodgkin's lymphoma (NHL). These antibodies include Rituximab (Mabthera), Britumomab (Zevalin) and Tositumomab (Bexxar). CD20 engaged by mAb can generate transmembrane signals capable of directly controlling cell growth and triggering cell death in certain tumors. Alternatively, mAb can mediate complement-dependent cytotoxicity.,PTM:Phosphorylated. Might be functionally





regulated by protein kinase(s).,similarity:Belongs to the MS4A family.,tissue specificity:Expressed on B-cells.,

Background

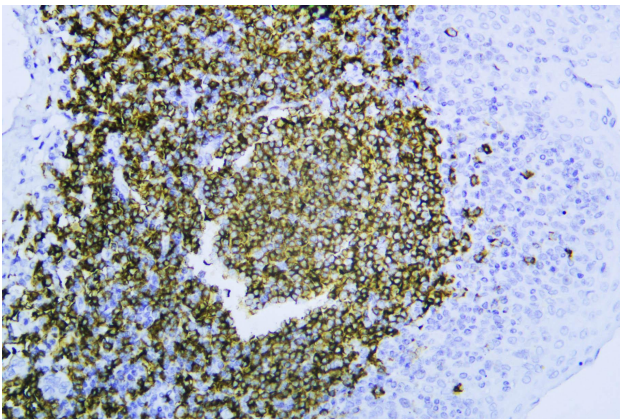
This gene encodes a member of the membrane-spanning 4A gene family. Members of this nascent protein family are characterized by common structural features and similar intron/exon splice boundaries and display unique expression patterns among hematopoietic cells and nonlymphoid tissues. This gene encodes a B-lymphocyte surface molecule which plays a role in the development and differentiation of B-cells into plasma cells. This family member is localized to 11q12, among a cluster of family members. Alternative splicing of this gene results in two transcript variants which encode the same protein. [provided by RefSeq, Jul 2008],

matters needing attention

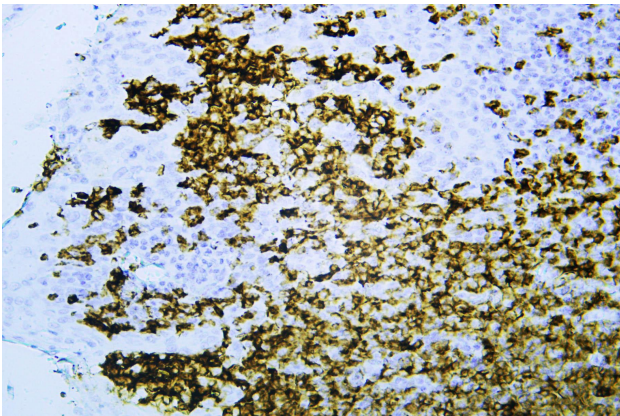
Avoid repeated freezing and thawing!

Usage suggestions

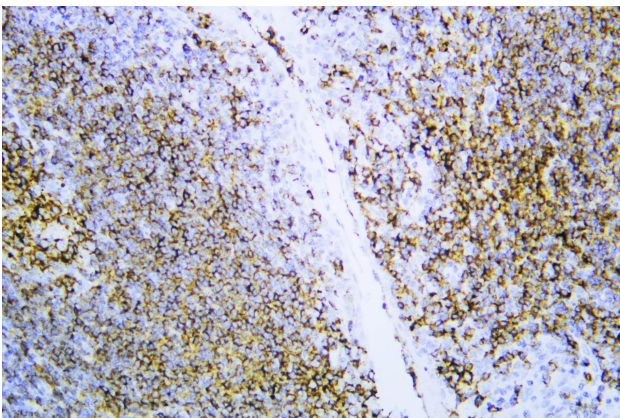
This product can be used in immunological reaction related experiments. For more information, please consult technical personnel.



Human tonsil was stained with anti-CD20 (ABT20R) rabbit mAb



Human tonsil was stained with anti-CD20 (ABT20R) rabbit mAb



Human tonsil was stained with anti-CD20 (ABT20R) rabbit mAb

杭州臻优品生物科技有限公司

热销产品:

蛋白、一抗、抗体对、ELISA试剂盒、生化试剂盒
CCK8试剂盒、QPCR检测试剂盒

检测服务:

ELISA检测及定制服务 | 生化检测 | PCR、QPCR检测 | WB检测
ICO-IP检测 | 切片 | 染色 | 免疫组化 | 免疫荧光 | 透射电镜全套
| 宏基因组、转录组、基因组、蛋白组、代谢组测序



关注官网



关注客服