



CD2 (ABT127R) Rabbit mAb (Ready to Use)

Catalog No	YP-rAb-18183
Isotype	IgG
Reactivity	Human
Applications	IHC
Gene Name	CD2
Protein Name	CD 2;CD2;CD2 antigen (p50), sheep red blood cell receptor;CD2 antigen;CD2 molecule;CD2_HUMAN;Erythrocyte receptor;FLJ46032;LFA-2;LFA-3 receptor;LFA2;LFA3 receptor;Ly-37;Lymphocyte function antigen 2;lymphocyte-function antigen-2;OTTHUMP00000024366;Rosette receptor;Sheep erythrocyte receptor;SRBC;T cell surface antigen CD2;T-cell surface antigen CD2;T-cell surface antigen T11/Leu-5;T-lymphocyte surface CD2 antigen;T11
Purification Process	Protein A
Specificity	This antibody detects endogenous levels of CD2
Formulation	The prediluted ready-to-use antibody is diluted in phosphate buffer saline containing stabilizing protein and 0.05% Proclin 300
Source	Monoclonal, Rabbit,IgG
Dilution	Ready to use for IHC Note: For IHC, we suggest antigen retrieval with TE buffer pH 9.0
Concentration	0.5 mg/ml
Purity	≥90%
Storage Stability	2° C to 8° C/1 year,Ship by ice bag
Synonyms	CD 2 ; CD2 ; CD2 antigen ; p50 ; , sheep red blood cell receptor ; CD2 antigen ; CD2 molecule ; CD2_HUMAN ; Erythrocyte receptor ; FLJ46032 ; LFA-2 ; LFA-3 receptor ; LFA2 ; LFA3 receptor ; Ly-37 ; Lymphocyte function antigen 2 ; lymphocyte-function antigen-2 ; OTTHUMP00000024366 ; Rosette receptor ; Sheep erythrocyte receptor ; SRBC ; T cell surface antigen CD2 ; T-cell surface antigen CD2 ; T-cell surface antigen T11/Leu-5 ; T-lymphocyte surface CD2 antigen ; T11
Observed Band	
Calculated Molecular Weight	
Cell Pathway	Membranous
Tissue Specificity	Tonsil





Function

CD2 interacts with lymphocyte function-associated antigen (LFA-3) and CD48/BCM1 to mediate adhesion between T-cells and other cell types. CD2 is implicated in the triggering of T-cells, the cytoplasmic domain is implicated in the signaling function. online information: CD2 entry, similarity: Contains 1 Ig-like C2-type (immunoglobulin-like) domain. similarity: Contains 1 Ig-like V-type (immunoglobulin-like) domain. subunit: Interacts with CD2AP (By similarity). Interacts with PSTPIP1.

Background

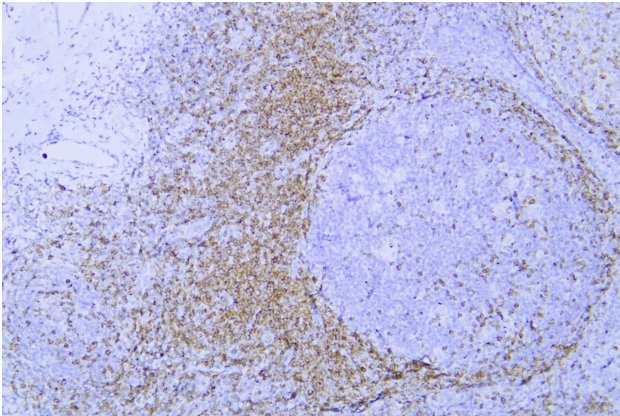
The protein encoded by this gene is a surface antigen found on all peripheral blood T-cells. The encoded protein interacts with LFA3 (CD58) on antigen presenting cells to optimize immune recognition. A locus control region (LCR) has been found in the 3' flanking sequence of this gene. [provided by RefSeq, Jun 2016],

matters needing attention

Avoid repeated freezing and thawing!

Usage suggestions

This product can be used in immunological reaction related experiments. For more information, please consult technical personnel.



Human tonsil was stained with anti-CD2 (ABT127R) rabbit mAb

